

Monday

FEBRUARY 28, 1985
WAYNE, NEBRASKA 68787
ONE HUNDRED EIGHTH YEAR
NUMBER THIRTY-NINE
25¢ THIS ISSUE
ONE SECTION, 10 PAGES



National Weather Service forecast: Monday through Wednesday, little to no precipitation; highs, 30s; lows, teens.
Mark Hammer
3rd Grade
Wayne Elementary



WSC takes two
page 5



Wrestling update
page 5

THE WAYNE HERALD

Bill proposed to appoint district court clerks

by Chuck Hackenmiller

District court clerks will be appointed by district court judges rather than elected by the public if a bill introduced this year in the Nebraska Legislature is passed.
Legislative bill 527 reads that "at least one full-time clerk of the district court shall be appointed in each district court's judicial district."
"Each clerk of the district court shall be appointed by the district court judges for the district, and shall serve a term of two years unless sooner removed by order of the judges."
The bill was introduced by the Nebraska Legislature's Judiciary Committee, which includes Peter Hoagland of Omaha, Chris Beutler of Lincoln, Ernest Chambers of Omaha, Lee Rupp of Monroe, John DeCamp of Neligh and Gerald Conway of Wayne.
Although Conway said he hasn't made a commitment on the bill "one way or the other" he said Friday the clerk of district court legislation is "an idea worth exploring."

"It hasn't been scheduled yet (for hearing) but I'm sure it will be," Conway said.
INTENT BEHIND the bill, which has been pushed for passage by district judges, is to update the district court clerk position in this age of technology, according to Conway.
"The position has gotten to be technical and requires technical skills. There are some people who run for these offices that do not possess the necessary technical skills," Conway said.
As an example, he said, child support isn't being collected or enforced as it should be.
"In order to provide the technical assistance to the court, the judicial system would identify and post people to the position," he said.
If the bill is approved, Conway said the district court clerks would fill out their elected terms. The district court clerk currently in office has the option of accepting a two-year appointment from the judicial court system. After the two years are served "the bill then becomes operable at that point," Conway said.

One benefit of LB 527, he said, would be that the salary cost of the district court clerk would be shifted to the state.
However, each county would be responsible for all costs involved in establishing, furnishing and maintaining appropriate courtroom and office facilities for the district court at the county seat.
The bill states that "the Supreme Court shall assume and include as expenses the cost of data processing involved in the operation of district courts."
A disadvantage will be that the county's general fund will be absent of fees, revenue, perquisites or receipts collected from the district court clerk's office if the bill is passed.
Wayne County Clerk Oregella Morris said Thursday the combined revenue received from the district court clerk's office last fiscal year was approximately \$4,436.
Morris said reaction on the bill has been that the county should hold on to as much local control as possible.
"The state has taken away (from the county) welfare, county clerk of court, clerk

of district court. Who will be next?" she said.
CONWAY SAID the biggest argument against the bill will likely fall on the issue of electing or appointing the district court clerk. "At this point, prior to any testimony at a hearing, I would say that the people in the county level do not have close affiliation with the clerk of district court or benefit as much from the office."
The district court clerk works more with the state judicial system and performs a state function, he said.
When asked if politics will enter into the appointments of district court clerks, Conway expressed his doubts: "If the judicial system wants someone sharp they will look for the qualified candidates," he said.
He said the clerk position would likely be a non-partisan function. Action by Democratic Governor Bob Kerrey in his appointment of a Republican to replace former District Judge Francis Kneiff demonstrated efforts in creating the non-partisan image of the state's judicial system, he added.



Denny Rourke



Gloria Gilbert

County fair board lists attractions

Something new, something in the past and something magical will appear at this year's Wayne County Fair.
Wayne County Fair officials have selected the talent which will perform at the Wayne County Fair on Aug. 8 to 11. Arnold Marr, fair board secretary, said a delegation recently attended the Nebraska Fair Association Convention in Lincoln.
The Clyde Foley Cummins Show will return the Friday evening of the fair's barbecue event "due to the local demand and popularity of the show the past year," Marr said.
Cummins is the grandson of the late country music legend Clyde "Red" Foley of Nashville, Tenn. and the nephew of Pat Boone. He has often performed with his cousin, Debbie Boone.
Gloria Gilbert, who has the title of "Miss Texas of 1982," and Denny Rourke will entertain the opening night of the fair.
Gilbert has a ventriloquist act and Rourke performs a magic and illusion show.
Other entertainment this year, Marr said, will include a pickup pull, tractor pull, and a demolition derby.

Board adds to Wayne-Carroll goals

A newly constructed or rented facility where school buses can be continually maintained will be considered an addition to the list of future Wayne-Carroll School District goals for building and grounds.
School district goals for this school year and upcoming years were reviewed by the school board members Monday afternoon during the regular meeting.
The bus building was suggested by board member Neil Sandahl, who said the building could be constructed or rented off the school campus. One person, he said, could be hired to be in charge of the bus maintenance program.
Superintendent Francis Haun said the current bus operation lacks proper preventive maintenance. Even an oil and filter change would be less expensive, he said, with a bus maintenance facility.
A goal the school board is contemplating

taking off the 1987-88 school year long range goal is the proposal to enlarge the high school parking lot. Existing lots probably could be used without spending additional funding to enlarge the high school lots, said board member Arnold Emry.
There could be space for about 30 diagonally parked cars immediately south of the high school, according to Haun. There appears to be problems with parking at the high school lots about six or seven times a year — most often during high school basketball games and high school concerts.
GOALS OF curriculum and instruction, buildings and grounds presented Monday for school board's review (from the present school year to 1989-90) were formulated from findings of the state evaluation report and the school's self-evaluation report, both conducted last year.
Completed this school year for curriculum

and instruction were: providing resource teachers of the middle school and elementary school; extension of gifted resource teacher to the kindergarten to fourth grade school; curriculum expansion in computers; and a math curriculum study.
A goal partially completed is the expansion of teacher in-service programs. A comprehensive social studies curriculum review has also been started.
Goals for the 1985-86 school year include expanding the computer curriculum; recommendations from the gifted task force [see related story]; review recommendations from the Athletic Task Force; publish a district-wide newsletter; implementation of social studies curriculum recommendations; and a study of the science curriculum.
GOALS questionable for 1985-86 include the vocational education curriculum review and the review of nursing services.

With the recent change in funding of vocational education, 57 percent of the allocation will be provided to those with special needs (such as displaced workers or handicapped individuals) and 43 percent will go to program improvement (expansion of facilities and new curriculum offerings).
Haun said earlier he is uncertain if Wayne's vocational education program would fall under any of the newly established categories.
Previous federal funding for vocational education had been placed in the general fund, earmarked for instructor salaries and not purchase of new equipment.
Nursing services are currently being provided by Educational Service Unit One (ESU). However, ESU members are looking at various ways to slim down the expenditures and one of those areas considered has been school nursing services.

WSC play upcoming

"Crimes of the Heart," a 1982 Pulitzer Prize winner, written by Beth Henley, will be presented in the Ley Theater at Wayne State College on Feb. 24 at 2 p.m. and Feb. 25 and 26 at 8 p.m.
Ley Theater is in the Brandenburg Education Building on the WSC campus.
The play is set in a fictional town of Hazlehurst, Mississippi, where a reunion of the three McGrath sisters leads to some comic events. The sisters are brought together by a major family crisis — one of several.
Babe is coming home from jail, where she was kept after shooting her husband; Lenny is about to encounter her 30th birthday with no romantic prospects in sight and Meg returns from her show business career.
The play resembles a soap opera like ap

pearance with a touch of Southern comedy. Brenda Kowalke from Early, Iowa plays Lenny; Lisa Soseman from Omaha plays Meg; and Beth Todd from Kingsley, Iowa plays Babe Botrelle.
Other members of the cast include: Kitris Zynx from Wolbach, Nebraska as Chick Boyle; Tom Fletcher of Wayne plays Doc Parler; and Paul Di Biasi from Council Bluffs plays Barnett Lloyd.
Non-theater and theater majors make up the crew and cast of this production. All aspects of production are covered by volunteers and students who are enrolled in theater classes.
General admission tickets are priced \$3, which can be purchased at the door before each performance.

Before state legislators

WSC makes revenue bond plea

A contingent of Wayne State College (WSC) officials and legal representatives appeared before the Nebraska Legislative Executive Committee to sell a product — the proposed Recreation/Intramural/Physical Education Center.
A public hearing in Lincoln on the Rice Carlson Expansion Project took place Wednesday evening before the executive board, which includes State Senators Chris Beutler (chairperson); Shirley Marsh (vice chairperson); William E. Barrett, Ernie Chambers, John W. DeCamp, Patricia S. Morehead, William E. Nichol, Carol McBride Pirsch, Loran Schmitl and Jerome Warner.
"Essentially, we did three things," said WSC President Ed Elliott.
"To the executive board we gave a brief but somewhat comprehensive history of the project — how it was evolved; nature of needs on-campus and the proposed funding," Elliott said.
Secondly, the project statement of the \$3.1 million proposed 50,324 square foot facility, which was recommended for approval by the Nebraska State College Board of Trustees, was presented to the senators.
The third point discussed by the WSC contingent was the time table the college hopes to follow in completing the new facility.
On the Monday prior to Wednesday's public hearing at the state capitol, Elliott said he hosted a dinner with northeast Nebraska and Omaha senators as guests to explain the proposed building project.

WSC, Donna Nelson, and State Board of Trustee members Carroll Thompson of Lincoln; Pete Kotsiopoulos of Kearney and J. Alan Gramer of Wayne.
"I think the hearing went very well," Elliott said. "We got very good feedback from the executive committee."
It is now up to the executive committee to approve the revenue bond request and bring the issue before the full body of the legislators.
Approval from the executive board could come early next week, Elliott said.
He is hoping the revenue bond request will move expeditiously as possible through the efforts of the executive board and legislative body. The State College Board of Trustees will be meeting on March 4 and Elliott said he would like to announce the steps for the next phase of the project development.
"We're hoping everything will be nice and clean by March. It depends on the legislation. There are still a number of things pending," Elliott said.
"I feel good about it. I think the project will be a reality," he said.
"For the interest to the community, my first task will be to make sure the tennis courts will be placed at the new location (on the north end of the Memorial Stadium parking lot). It is important for our com-

See EXPANSION, page 2.

Clarification

It was not a ghost writer who supplied the Valentine's Day story on the front page of the Feb. 14 edition.
The story was written by Pat Meierhenry, our Farmer's Wife columnist. In the rush of getting the paper to press, her name was inadvertently omitted from the story.



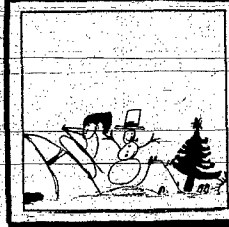
Sitting pretty
AN OLD corn crib is framed with decaying branches in a field north of Winside.

Photography: Chuck Hackenmiller

Monday

FEBRUARY 18, 1985
WAYNE, NEBRASKA 68787
ONE HUNDRED EIGHTH YEAR
NUMBER THIRTY-NINE

25¢ THIS ISSUE
ONE SECTION, 10 PAGES



National Weather Service forecast: Monday through Wednesday; little to no precipitation; highs, 30s; lows, teens.

Mark Hammer
3rd Grade
Wayne Elementary



WSC takes two

—page 5



Wrestling update

—page 5

THE WAYNE HERALD

Bill proposed to appoint district court clerks

by Chuck Hackenmiller

District court clerks will be appointed by district court judges rather than elected by the public if a bill introduced this year in the Nebraska Legislature is passed.

Legislative bill 527 reads that "at least one full-time clerk of the district court shall be appointed in each district court's judicial district."

"Each clerk of the district court shall be appointed by the district court judges for the district, and shall serve a term of two years unless, sooner removed by order of the judges."

The bill was introduced by the Nebraska Legislature's Judiciary Committee, which includes Peter Hoagland of Omaha, Chris Beutler of Lincoln, Ernest Chambers of Omaha, Lee Rupp of Monroe, John DeCamp of Neligh and Gerald Conway of Wayne.

Although Conway said he hasn't made a commitment on the bill "one way or the other," he said Friday the clerk of district court legislation is "an idea worth exploring."

"It hasn't been scheduled yet [for hearing] but I'm sure it will be," Conway said.

INTENT BEHIND the bill, which has been pushed for passage by district judges, is to update the district court clerk position in this age of technology, according to Conway.

"The position has gotten to be technical and requires technical skills. There are some people who run for these offices that do not possess the necessary technical skills," Conway said.

As an example, he said, child support isn't being collected or enforced as it should be. "In order to provide the technical assistance to the court, the judicial system would identify and post people to the position," he said.

If the bill is approved, Conway said the district court clerks would fill out their elected terms. The district court clerk currently in office has the option of accepting a two-year appointment from the judicial court system. After the two years are served "the bill then becomes operable at that point," Conway said.

One benefit of LB 527, he said, would be that "the salary cost of the district court clerk would be shifted to the state."

However, each county would be responsible for all costs involved in establishing, furnishing and maintaining appropriate courtroom and office facilities for the district court of the county seat.

The bill states that "the Supreme Court shall assume and include as expenses the cost of data processing involved in the operation of district courts."

A disadvantage will be that the county's general fund will be absent of fees, revenue, perquisites or receipts collected from the district court clerk's office if the bill is passed.

Wayne County Clerk Orgetta Morris said Thursday the combined revenue received from the district court clerk's office last fiscal year was approximately \$4,436.

Morris said reaction on the bill has been that the county should hold on to as much local control as possible.

"The state has taken away [from the county] welfare, county clerk of court, clerk

of district court—Who will be next?" she said.

CONWAY SAID the biggest argument against the bill will likely fall on the issue of electing or appointing the district court clerk. "At this point, prior to any testimony at a hearing, I would say that the people in the county level do not have close affiliation with the clerk of district court or benefit as much from the office."

The district court clerk works more with the state judicial system and performs a state function, he said.

When asked if politics will enter into the appointments of district court clerks, Conway expressed his doubts. "If the judicial system wants someone sharp they will look for the qualified candidates," he said.

He said the clerk position would likely be a non-partisan function. Action by Democratic Governor Bob Kerrey in his appointment of a Republican to replace former District Judge Francis Kneiff demonstrated efforts in creating the non-partisan image of the state's judicial system, he added.



Denny Rourke



Gloria Gilbert

County fair board lists attractions

Something new, something in the past and something magical will appear at this year's Wayne County Fair.

Wayne County Fair officials have selected the talent which will perform at the Wayne County Fair on Aug. 8 to 11. Arnold Marr, fair board secretary, said a delegation recently attended the Nebraska Fair Association Convention in Lincoln.

The Clyde Foley Cummins Show will return the Friday evening of the fair's barbecue event "due to the local demand and popularity of the show the past year," Marr said.

Cummins is the grandson of the late country music legend Clyde "Red" Foley of Nashville, Tenn., and the nephew of Pat Boone. He has often performed with his cousin, Debbie Boone.

Gloria Gilbert, who has the title of "Miss Texas of 1982," and Denny Rourke will entertain the opening night of the fair.

Gilbert has a ventriloquist act and Rourke performs a magic and illusion show. Other entertainment this year, Marr said, will include a pickup pull, tractor pull and a demolition derby.

Board adds to Wayne-Carroll goals

A newly constructed or rented facility where school buses can be continually maintained will be considered an addition to the list of future Wayne-Carroll School District goals for building and grounds.

School district goals for this school year and upcoming years were reviewed by the school board members Monday afternoon during the regular meeting.

The bus building was suggested by board member Neil Sandahl, who said the building could be constructed or rented off the school campus. One person, he said, could be hired to be in charge of the bus maintenance program.

Superintendent Francis Haun said the current bus operation lacks proper preventive maintenance. Even an oil and filter change would be less expensive, he said, with a bus maintenance facility.

A goal the school board is contemplating

taking off the 1987-88 school year long range goal is the proposal to enlarge the high school parking lot. Existing lots probably could be used without spending additional funding to enlarge the high school lots, said board member Arnold Emry.

There could be space for about 30 diagonally parked cars immediately south of the high school, according to Haun. There appears to be problems with parking at the high school lots about six or seven times a year — most often during high school basketball games and high school concerts.

GOALS OF curriculum and instruction, buildings and grounds presented Monday for school board's review (from the present school year to 1988-89) were formulated from findings of the state evaluation report and the school's self-evaluation report, both conducted last year.

Completed this school year for curriculum

and instruction were: providing resource teachers of the middle school and elementary school; extension of gifted resource teacher to the kindergarten to fourth grade school; curriculum expansion in computers; and a math curriculum study.

A goal partially completed is the expansion of teacher in-service programs. A comprehensive social studies curriculum review has also been started.

Goals for the 1988-89 school year include expanding the computer curriculum; recommendations from the gifted task force (see related story); review recommendations from the Athletic Task Force; publish a district-wide newsletter; implementation of social studies curriculum recommendations; and a study of the science curriculum.

GOALS questionable for 1985-86 include the vocational education curriculum review and the review of nursing services.

With the recent change in funding of vocational education, 97 percent of the allocation will be provided to those with special needs (such as displaced workers or handicapped individuals) and 43 percent will go to program improvement (expansion of facilities and new curriculum offerings).

Haun said earlier he is uncertain if Wayne's vocational education program would fall under any of the newly established categories.

Previous federal funding for vocational education had been placed in the general fund, earmarked for instructor salaries and not purchase of new equipment.

Nursing services are currently being provided by Educational Service Unit One (ESU). However, ESU members are looking at various ways to slim down the expenditures and one of those areas considered has been school nursing services.



Sitting pretty

AN OLD corn crib is framed by decaying branches in a field north of Winslow.

Photography: Chuck Hackenmiller

WSC play upcoming

"Crimes of the Heart," a 1982 Pulitzer Prize winner, written by Beth Henley, will be presented in the Ley Theater at Wayne State College on Feb. 24 at 2 p.m. and Feb. 25 and 26 at 8 p.m.

Ley Theater is in the Brandenburg Education Building on the WSC campus.

The play is set in a fictional town of Hazlehurst, Mississippi, where a reunion of the three McGrath sisters lead to some comic events. The sisters are brought together by a major family crisis — one of several.

Babe is coming home from jail, where she was kept after shooting her husband, Lenny, is about to encounter her 30th birthday with no romantic prospects in sight and Meg returns from her show business career.

The play resembles a soap opera like ap-

pearance with a touch of Southern comedy. Brenda Kowalks from Early, Iowa plays Lenny; Lisa Soteman from Omaha plays Meg; and Beth Todd from Kingsley, Iowa plays Babe Borette.

Other members of the cast include: Kris Zyltux from Wolbach, Nebraska as Chick Boyle; Tom Fletcher from Wayne plays Doc Porter; and Paul Di Biasi from Council Bluffs plays Barnett Lloyd.

Non-healer and theater majors make up the crew and cast of this production. All aspects of production are covered by volunteers and students who are enrolled in theater classes.

General admission tickets are priced \$3, which can be purchased at the door before each performance.

Before state legislators

WSC makes revenue bond plea

A contingent of Wayne State College (WSC) officials and legal representatives appeared before the Nebraska Legislative Executive Committee to sell a product — the proposed Recreation/Intramural/Physical Education Center.

A public hearing in Lincoln on the Rice-Carlson Expansion Project took place Wednesday evening before the executive board, which includes State Senators Chris Beutler (chairperson), Shirley Marsh (vice chairperson), William E. Barrett, Eric Chambers, John W. DeCamp, Patricia S. Morehead, William E. Nichol, Carol McBride Pirschi, Loran Schmit and Jerome Warner.

"Essentially, we did three things," said WSC President Ed Elliott.

"To the executive board we gave a brief but somewhat comprehensive history of the project — how it was evolved, nature of needs on campus and the proposed funding," Elliott said.

Secondly, the project statement of the \$3.1 million proposed 50,324 square foot facility, which was recommended for approval by the Nebraska State College Board of Trustees, was presented to the senators.

The third point discussed by the WSC contingent was the time table the college hopes to follow in completing the new facility.

On the Monday prior to Wednesday's public hearing at the state capitol, Elliott said he hosted a dinner with northeast Nebraska and Omaha senators as guests to explain the proposed building project.

APPEARING WITH Elliott at the hearing were Warren Bud Johnson, an attorney from Lincoln who is working with WSC on the project; Bill Beavers of Omaha who is a revenue bond consultant; two students (Dean Jacobs, WSC Student Senate president and Joe Olson, student trustee member); John Struve, dean of finance at

WSC; Donna Nelson, and State Board of Trustees members Carroll Thompson of Lincoln; Pete Kotsiopoulos-of Kearney and J. Alan Cramer of Wayne.

"I think the hearing went very well," Elliott said. "We got very good feedback from the executive committee."

It is now up to the executive committee to approve the revenue bond request and bring the issue before the full body of the legislators.

Approval from the executive board could come early next week, Elliott said.

He is hoping the revenue bond request will move expeditiously as possible through the efforts of the executive board and legislative body. The State College Board of Trustees will be meeting on March 6 and Elliott said he would like to announce the steps for the next phase of the project development.

"We're hoping everything will be nice and clean by March. It depends on the legislation. There are still a number of things pending," Elliott said.

"I feel good about it. I think the project will be a reality," he said.

"For the interest to the community, my first task will be to make sure the tennis courts will be placed at the new location (on the north end of the Memorial Stadium parking lot). It is important to our community."

See EXPANSION, page 2.

Clarification

It was not a ghost writer who supplied the Valentine's Day story on the front page of the Feb. 14 edition.

The story was written by Pat Mastenberry, our Farmer's Wife columnist. In the past getting the paper to press, her name was inadvertently omitted from the story.

Conservation tillage meeting

The results of the 1984 Wayne County Conservation Tillage plots will be shown and discussed at a meeting Wednesday, Feb. 20 at 1:30 p.m. at the ASCS Office meeting room in Wayne, announced Don C. Spitzke, Wayne County Extension Agent.

Not only will we be discussing the results of last year's no-till plots, says Spitzke, but we will also discuss how a farmer can use his present equipment for conservation tillage as well as no-till in soybean stubbles.

Spitzke went on to say that the Wayne County Extension Service is offering several other meetings in the near future that will help farmers reduce costs and increase efficiency in these difficult financial times. A cost cutting meeting for crop production will be at 1:15 p.m. March 4, city auditorium in Wayne and an irrigation management meeting will be held 1:30 p.m. Wednesday, March 13 at the ASCS meeting room in Wayne.

Farm financial counseling

The University of Nebraska-Lincoln Cooperative Extension Service has employed 14 financial counselors to support the Farm Financial Counseling Centers which opened Monday, Feb. 11. Stan Starling, Dixon County Extension Agent, reports that one or more of these counselors will meet with farmers and ranchers at the Northeast Research and Extension Center near Concord during February and March. There will be at least 20 other available meeting locations around the state. The intent is to utilize office facilities near where the clientele live.

This particular program is a limited counseling service. Starting reports. Participants will be assisted in reviewing farm enterprise alternatives and in preparation of a cash flow plan as they request this year's operating loan. There will be no charge for this service, but clients will be limited to two office visits not to exceed eight hours per client. Identification of clients will be kept confidential.

Initial appointments can be made by calling the Farm Financial Information Line (800) 535-3456, or your local Extension Office, according to Starling.

Foundation phone campaign

The first-ever nationwide phone campaign by the Wayne State Foundation will begin Sunday, Feb. 17.

A part of the annual fund solicitation program by the Foundation, volunteers will man phones at Wayne State Sundays through Thursdays for the next four weeks trying to reach a goal of \$20,000.

Volunteers will be calling Wayne State alumni throughout the nation from 3:30-3:50 p.m. and 4:30-9 p.m. Sundays and 6:30-9:30 p.m. Mondays through Thursdays until March 14.

Funds generated from the nationwide phone campaign help support the Foundation's student scholarships and other college programs that receive little or no state support.

More phone volunteers are needed during the week of March 3-7, said Kirk Hutton, executive director of the Wayne State Foundation. Alumni and friends of Wayne State College in the Wayne area interested in helping should call the WSC Alumni Office at 375-2200, ext. 21.

Greiss gets nursing cap

Robin Greiss, wife of Burton M. Greiss of Wayne, Nebraska, was among the 49 first-year nursing students at St. Joseph Mercy School of Nursing Marian Health Center, Sioux City, Iowa, who received their nursing diploma and pins at a social ceremony on Sunday afternoon, Feb. 3 at 1:30 p.m. at St. Michael's Church in Sioux City, Iowa. This event signifies the first step toward the goal of becoming a professional nurse.

Freshman orientation

On Thursday, March 14 from 7 until 8:30 p.m., Wayne High School will be holding annual Freshman Orientation.

On that evening parents, and students who will attend WHS during the 1985-86 school year, are invited to visit school, tour the facilities and visit with teachers regarding student class schedules.

A general session in the Lecture Hall at 7 p.m. will begin the evening activities. Parents and students will then be allowed to visit with teachers in various classrooms. Refreshments will be served at 8:30.

Media presentations will take place during the evening in the school library.

Final registration for all Wayne 9th graders will take place on Monday, March 25. Rural students may also register during the week of March 25-29 or any time convenient to them.

Public meeting at Senior Center

The Wayne Senior Citizens Center, located at 306 Pearl St., will hold a public meeting on Wednesday, Feb. 20 from 1 to 1:30 p.m.

Georgia Janssen, coordinator, said the meeting is designed for residents of the community to express their concerns regarding what senior citizens services they would like to see continued or established.

All interested persons are encouraged to attend.

Brandt on Deans' List

Wichita State University has announced its deans honor roll for the fall semester of 1984.

Deans' Honor Roll students include Mark Alan Brandt, of Wayne. To be included on the Honor Roll, students must earn at least a 3.25 grade point average on a 4.0 system for their semester's work and must be enrolled in at least 12 credit hours of classes.

Weekly gleanings

APPROXIMATELY 125 persons attended the first organizational meeting for the Howcaste Farm Crisis Committee last Monday night. Those present listened to information presented by members from Wynot and Wakefield.

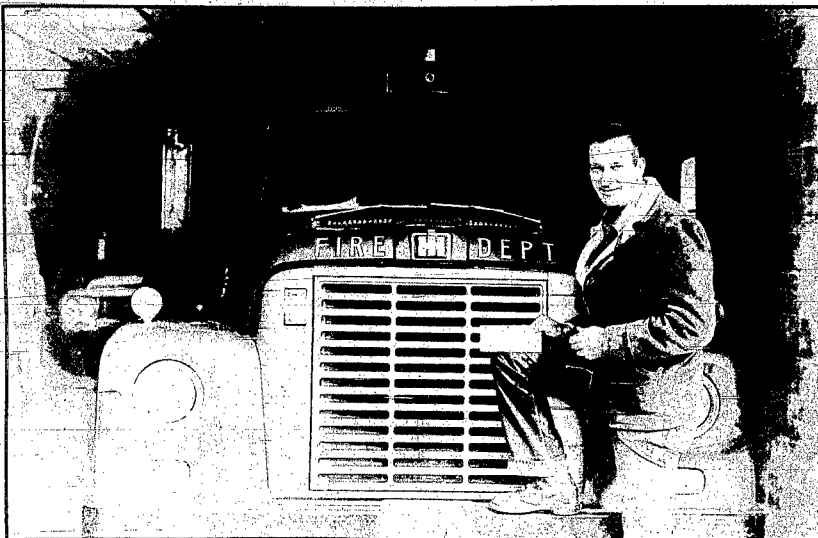
AETER 39 years in the business, owners and stockholders in Albers Deny, a secretary to the Howcaste Farm Crisis Committee, have decided to pelletting plant, have decided to cease operations. The plant is scheduled to close Feb. 28 when all field equipment will be sold. The new deputy is a native of Lincoln.

DR. ROBERT Mayer, secondary principal at Plainview Public Schools, was offered the position of superintendent of schools by the board of education last Monday evening. That position will become vacant at the end of the current term following the resignation of W. E. Hladik who is currently serving as superintendent.



Your honor?

A CUB Scout troop from Wayne observed the Wayne City Council in action as part of National Boy Scout Week.



Ak-Sar-Ben donation

RUSSELL PRINCE, fire chief of the Winside Volunteer Fire and Rescue Department, accepts a \$300 check from AK-Sar-Ben as a contribution toward air-park purchases.

school lunches

- | | | | | |
|--|--|--|---|--|
| <p>ALLEN
Monday, Feb. 18: Spaghetti and meat sauce, green beans, pears, breadsticks.
Tuesday, Feb. 19: Hot ham and cheese, corn, sweet potatoes or tomatoes, pudding.
Wednesday, Feb. 20: Macaroni and cheese, peas, peaches, peanut butter sandwich.
Thursday, Feb. 21: Chili and crackers; cheddar cheese; cinnamon roll, applesauce.
Friday, Feb. 22: Fish and tartar sauce, mashed potatoes and gravy, buttered carrots, bread and butter, cherry upside-down cake.
Milk served with each meal.</p> | <p>mixed fruit, carrot sticks, tea rolls; or salad tray.
Thursday, Feb. 21: Chicken pattie on bun, green beans, pears, cookie, or salad tray.
Friday, Feb. 22: Tuna salad sandwich, tater rounds, cherry crisp; or salad tray.
Milk served with each meal.</p> | <p>WAYNE-CARROLL
Monday, Feb. 18: Sloppy Joe with bun, French fries, baked beans, apple crisp with whipped topping; or toasted cheese sandwich, French fries, baked beans, apple crisp with whipped topping; or chef's salad, roll or crackers, apple crisp with whipped topping.
Tuesday, Feb. 19: Chili and crackers, carrot sticks, peanut butter cup, blueberries, cinnamon roll; or chicken noodle soup, crackers, carrot sticks, peanut butter cup, blueberries; or chef's salad, crackers, carrot sticks, blueberries, cinnamon roll.
Wednesday, Feb. 20: Egg salad and/or peanut butter sandwich, French fries, celery sticks, peaches; cookie; or chef's salad; roll or crackers, celery sticks, peaches, cookie.
Thursday, Feb. 21: Barbecued pork sandwich, sweet potatoes, pears, doughnut.
Friday, Feb. 22: Fish and tartar sauce, green beans, roll and butter, applesauce, cookie.
Milk served with each meal.</p> | <p>WAKEFIELD
Monday, Feb. 18: Mr. Rib sandwich, French fries; corn, cherry sauce.
Tuesday, Feb. 19: Hamburger sandwich, pickles, corn, peaches, poorman's cake.
Wednesday, Feb. 20: Vegetable soup and crackers, salmon salad sandwich, carrots and celery, getatin with topping.
Thursday, Feb. 21: Barbecued pork sandwich, sweet potatoes, pears, doughnut.
Friday, Feb. 22: Fish and tartar sauce, green beans, roll and butter, applesauce, cookie.
Milk served with each meal.</p> | <p>WINSIDE
Monday, Feb. 18: Sloppy Joes, hash browns, green beans, applesauce cake; or salad bar.
Tuesday, Feb. 19: Chicken nuggets, nachos and cheese, French fries; rolls and butter, peaches; or salad bar.
Wednesday, Feb. 20: Cheese pizza, orange juice, Rice Krispie bar; or salad bar.
Thursday, Feb. 21: Spaghetti and meat sauce, carrot and celery sticks, garlic bread, pears; or salad bar.
Friday, Feb. 22: Fish sandwich, lettuce, onion rings, pineapple; or salad bar.
Milk served with each meal.</p> |
|--|--|--|---|--|

Expansion

Continued from page one.

Space in the new facility will be occupied by:

- A multi-purpose gymnasium, with four basketball courts that are also marked for four volleyball courts, two badminton courts and two tennis courts; 1/10 mile competitive running track; pole vault; long jump; shot-put; seating for 300; and areas for special groups/events.
- Custodial facilities and storage rooms, a control-center and two public restrooms.
- Gymnastics/wrestling space, a weight room and a sauna.
- Dance/aerobics space.
- Two meeting rooms.
- And four racquetball courts.

Publication features Ponca State Park

Because of the abundance of fossils in Ponca State Park, a paragraph in a new publication of the University of Nebraska-Lincoln Conservation and Survey Division warns: "Do not collect fossils in the park; not only is it illegal, but the fossils serve as educational aids to future students and park visitors."

The publication, "Geology of Ponca State Park, Nebraska," is one of a series of field guides designed for youths and others interested in geology. "Schools, 4-H groups, Girl and Boy Scouts are especially interested in sites in Nebraska where geology and paleontology can be studied," Vincent Dreeszen, director of the UNL Conservation and Survey Division said, "and this new field guide will be of assistance."

"Ponca State Park in northeastern Dixon County has some important exposures of late Cretaceous-age sedimentary rocks that are about 95 million years old," the introduction of the field guide points out.

The rock exposures, as explained in the guide, provide an opportunity to view some of Nebraska's unique scenery and to observe outstanding features of Nebraska's geology and paleontology.

The 33-PAGE guide's authors are Roger K. Pabian and Dennis E. Lawton, Conservation and Survey Division researchers. They suggest that visitors to Ponca State Park take binoculars and a camera with telephoto and

zoom lenses for recording the trip.

Other features of the park, one of 12 managed by the Nebraska State Game and Parks Commission, are a swimming pool, a shelter house built from large, glacially derived boulders and a suspended oil pipeline across the Missouri River. The pipeline is the longest of its kind in the world, traveling 518 miles from Enid, Okla. to Rock Rapids, Iowa.

Topographic maps showing locations of rock outcrops, a geologic time chart, pictures, diagrams and a geologic bedrock map of Nebraska are included in this publication. Educational Circular No. 6, available for \$3 plus tax at the park or at the Conservation and Survey Division, Room 112, Nebraska Hall, University of Nebraska-Lincoln, Lincoln, NE 68508-0517.

Reward offered

Bill's G.W. is offering a \$500 reward for the arrest and conviction of person or persons who vandalized their garbage truck, the night of Feb. 15. Please call the Wayne Police Department with any information 375-2626.

county court

- Traffic fines**
Kirk E. Griffith, Norfolk, speeding, \$25; John T. Sanders, Grand Island, no valid registration, \$15; Dawn M. Boatman, Wakefield, no operator's license, \$15; Michael A. Jaeger, Winside, careless driving, \$25; Cheryl M. Krusemark, Wakefield, speeding, \$46; Kenneth M. Buse, Wisner, speeding, \$16; Steva Stewart, Waterbury, Nebraska, no valid registration, \$15.
- Criminal dispositions**
William J. Keifer, Wayne, theft by shoplifting, jail two days and costs.
- Small claims filings**
Lisa Steffing, Wayne, plaintiff, against Frank Woehler, Wayne, \$150, for rental deposit.
Wayne Grain and Feed, Wayne, plaintiff, against Warren and Jean Schultz, Wayne, \$62.94, balance of bill.
Stanley D. Canner, Wayne, plaintiff, against Robert Lakey, S81.15, rent, utilities and cleaning. Settled before trial.
Avco Financial Services, Sioux City, plaintiff, against Patrick Murphy, Wakefield, \$153.24, note due. Settled before trial.
- Small Claims Judgements**
David Baker, Sara Van Varen, plaintiff against Frank Woehler. Judgement for plaintiff, \$175 and cost of \$8; judgement for defendant on counterclaim for \$175 and \$8.50 cost. Net judgement is 50 cents for defendant.
- Wayne Veterinary Clinic**, plaintiff, against Doris Jones, \$118, settled before trial.
Carlson Lumber Company, plaintiff, against Dan Olson, d/b/a King of Clubs, for \$1,000. Plaintiff's claim dismissed.
Mary Lou Krusomak, plaintiff, awarded \$382.58, from Cindy Slaton.
Deryl E. Lawrence, plaintiff, against Lee Foote, \$379.64. Settled before trial.
Leigh Crossdale and Marci Nixon, plaintiff, against Bernice Kube and Barb Mitchell, \$70. Dismissed.
- Civil filings**
Tri-County Non-Stock Cooperative Association, plaintiff, against Don Langenberg and Robert Langenberg, \$72.91 for purchase of merchandise.
Tri-County Non-Stock Cooperative Association, plaintiff, against Leon Vondrak, \$779.76, for purchase of merchandise.
Tri-County Non-Stock Cooperative Association, plaintiff, against Alan Schrant, \$1,900.04, for purchase of merchandise.
- Civil Judgement**
Credit Bureau Services, Inc., plaintiff, awarded \$443.78 awarded \$443.78 from Kathryn Billheimer.
Credit Bureau Services, Inc., plaintiff, awarded \$122.65 from Roger Schindler.

obituaries

Marjorie Holm

Marjorie Holm, 77, of Wakefield died Monday, Feb. 11, 1985 at the Wakefield Health Care Center. Services were held Thursday, Feb. 14 at the Evangelical Covenant Church in Wakefield. The Rev. E. Nell Peterson.

Marjorie Augusta Holm, the daughter of Carl Hjalmer Larsen, was born Sept. 20, 1907 at Lincoln. She married Reuben Holm in August, 1929. She graduated from Oakland High School. She taught school in Oakland, Winnebago and Wakefield rural schools. She was a member of the Evangelical Covenant Church in Wakefield, the Central Club and the Covenant Women's Club.
Survivors include one son, Earl of Wakefield; one daughter, Mrs. James (Janice) Thompson of Omaha; four grandchildren; three brothers, Cecil, of Emerson; Oliven of Pembina, N.D.; and Enver of Fullerton, Calif.; and one sister, Mrs. Malcolm (Rosella) Jensen of Emerson.

Funeral services were held at the Wakefield Cemetery with Bressler Funeral Home in charge of arrangements.

Arthur Bronzynski

Arthur Bronzynski, 71, of Norfolk, formerly of Winside and Wakefield, died Thursday, Feb. 14, 1985 at a Norfolk hospital. Services will be held Monday, Feb. 18 at 10 a.m. at the Christ Lutheran Church in Norfolk. The Rev. John Bass and the Rev. Walter Buss will officiate.

Arthur C. Bronzynski, the son of Albert and Louise Dammie Bronzynski, was born Oct. 22, 1913 at Winside. He attended school in Winside. He married Norena Pohman on June 29, 1939 at Stanton. The couple farmed near Winside and Wakefield until moving to Norfolk in 1965.

Survivors include one son, Merle of Norfolk; one daughter, Mrs. Ronald (Arlynn) Temme of Norfolk; two brothers, Carl of Norfolk and Raymond of Golden, Colo.; and one sister, Mrs. Russell (Clara) Krause of Clarkson.

He was preceded in death by his wife on Dec. 27, 1977. Burial will be in the Hillcrest Memorial Park Cemetery in Norfolk with Home for Funerals of Norfolk in charge of arrangements.

Conservation tillage meeting

The results of the 1984 Wayne County Conservation Tillage plots will be shown and discussed at a meeting Wednesday, Feb. 20 at 1:30 p.m. at the ASCS Office meeting room in Wayne, announced Don C. Spitzer, Wayne County Extension Agent.

Not only will we be discussing the results of last year's no-till plots, says Spitzer, but we will also discuss how a farmer can use his present equipment for conservation tillage as well as no-till in soybean stubbles.

Spitzer went on to say that the Wayne County Extension Service is offering several other meetings in the near future that will help farmers reduce costs and increase efficiency in these difficult financial times. A cost cutting meeting for crop production will be at 1:15 p.m. March 4, city auditorium in Wayne and an irrigation management meeting will be held 1:30 p.m. Wednesday, March 13 at the ASCS meeting room in Wayne.

Farm financial counseling

The University of Nebraska-Lincoln Cooperative Extension Service has employed 14 financial counselors to support the Farm Financial Counseling Centers which opened Monday, Feb. 11. Stan Starling, Dixon County Extension Agent, reports that one or more of these counselors will meet with farmers and ranchers at the Northeast Extension and Extension Center near Concord during February and March. There will be at least 20 other available meeting locations around the state. The intent is to utilize office facilities near where the clientele live.

This particular program is a limited counseling service, Starling reports. Participants will be assisted in reviewing farm enterprise alternatives and in preparation of a cash flow plan as they request the Northeast Extension and Extension Center near Concord during February and March. There will be no charge for this service, but clients will be limited to two office visits not to exceed eight hours per client. Identification of clients will be kept confidential.

Initial appointments can be made by calling the Farm Financial Information Line (800) 535-3456, or your local Extension Office, according to Starling.

Foundation phone campaign

The first-ever nationwide phone campaign by the Wayne State Foundation will begin Sunday, Feb. 17. A part of the annual fund solicitation program by the Foundation, volunteers will man phones at Wayne State Sundays through Thursdays for the next four weeks trying to reach a goal of \$20,000.

Volunteers will be calling Wayne State alumni throughout the nation from 1:30-3:30, 3:30-6 and 6:30-9 p.m. Sundays and 6:30-9:30 p.m. Mondays through Thursdays until March 14.

Funds generated from the nationwide phone campaign help support the Foundation's student scholarships and other college programs that receive little or no state support.

More phone volunteers are needed during the week of March 3-7, said Kirk Hutton, executive director of the Wayne State Foundation. Alumni and friends of Wayne State College in the Wayne area interested in helping should call the WSC Alumni Office at 375-2200, ext. 21.

Greiss gets nursing cap

Robin Greiss, wife of Burton M. Greiss of Wayne, Nebraska, was among the 49 first year nursing students at St. Joseph Mercy School of Nursing Marian Health Center, Sioux City, Iowa, who received their Mercy nursing caps or bars at special ceremonies on Sunday afternoon, Feb. 3 at 1:30 p.m. at St. Michael's Church in Sioux City, Iowa. This event signifies the first step toward the goal of becoming a professional nurse.

Freshman orientation

On Thursday, March 14 from 7 until 8:30 p.m., Wayne High School will be holding annual Freshman Orientation.

On that evening parents and students who will attend WHS during the 1985-86 school year are invited to visit school, tour the facilities and visit with teachers regarding student class schedules.

A general session in the Lecture Hall at 7 p.m. will begin the evening activities. Parents and students will then be allowed to visit with teachers in various classrooms. Refreshments will be served at 8:30.

Media presentations will take place during the evening in the school library.

Final registration for all Wayne 9th graders will take place on Monday, March 25. Rural students may also register during the week of March 25-29 or any time convenient to them.

Public meeting at Senior Center

The Wayne Senior Citizens Center, located at 304 Pearl St., will hold a public meeting on Wednesday, Feb. 20 from 1 to 1:30 p.m.

Georgia Janssen, coordinator, said the meeting is designed for residents of the community to express their concerns regarding what senior citizens services they would like to see continued or established.

All interested persons are encouraged to attend.

Brandt on Deans' List

Wichita State University has announced its deans honor roll for the fall semester of 1984.

Deans' Honor Roll students include Mark Alan Brandt, of Wayne.

To be included on the Honor Roll, students must earn at least a 3.25 grade point average on a 4.0 system for their semester's work and must be enrolled in at least 12 credit hours of classes.

County cleanings

APPROXIMATELY 125 persons attended the first organizational meeting for the Newcastle Farm Crisis Committee last Monday evening. That position will become vacant at the end of the current term following the resignation of W. E. Hladik, who is currently serving as superintendent.

AFTER 39 years in the business, owners and stockholders in Albers Dehay, a Wisner alfalfa dehydrating and pelleting plant, have decided to cease operations. The plant is situated on Rte. 20 and is scheduled to close Feb. 28 when Deputy Gary Umberger on the county sheriff office staff. The new deputy is a native of Lincoln.

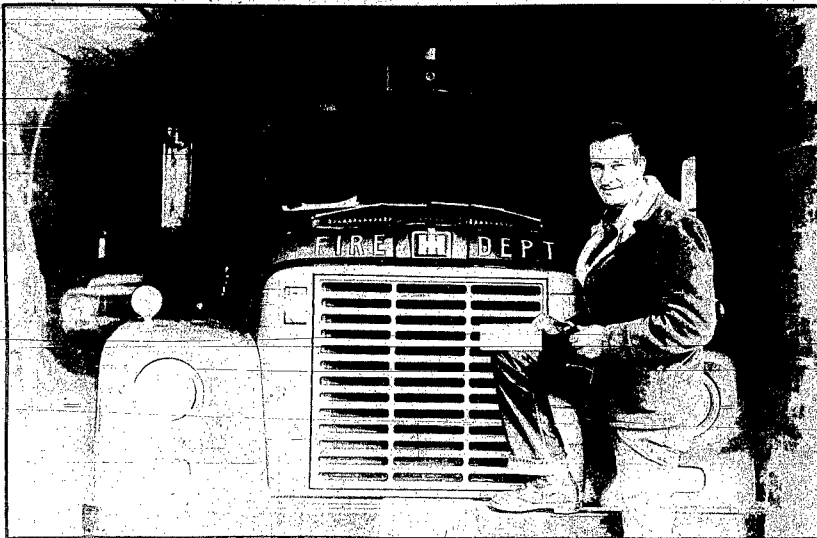
PENDER'S centennial organization is still looking for a secretary to help with the numerous tasks coming up as the community begins to plan for this summer's 100th birthday party, scheduled June 22-29.



Photography: Chuck Hackenmiller

Your honor?

A CUB Scout troop from Wayne observed the Wayne City Council in action as part of National Boy Scout Week.



Wayne Herald Photography

Ak-Sar-Ben donation

RUSSELL PRINCE, fire chief of the Winside Volunteer Fire and Rescue Department, accepts a \$300 check from AK-Sar-Ben as a contribution toward air-pack purchases.

school lunches

ALLEN
Monday, Feb. 18: Spaghetti and meat sauce, green beans, pears, breadsticks.

Tuesday, Feb. 19: Hot ham and cheese, corn, sweet potatoes or tomatoes, pudding.

Wednesday, Feb. 20: Macaroni and cheese, peas, peaches, peanut butter sandwich.

Thursday, Feb. 21: Chili and crackers, cheddar cheese, cinnamon roll, applesauce.

Friday, Feb. 22: Fish and tartar sauce, mashed potatoes and gravy, buttered carrots, bread and butter, cherry upside-down cake.

Milk served with each meal.

mixed fruit, carrot sticks, tea rolls; or salad tray.

Thursday, Feb. 21: Chicken pattie on bun, green beans, pears, cookie; or salad tray.

Friday, Feb. 22: Tuna salad sandwich, later rounds, cherry crisp; or salad tray.

Milk served with each meal.

WAKEFIELD

Monday, Feb. 18: Mr. Rib sandwich, French fries, corn, cherry sauce.

Tuesday, Feb. 19: Hamburger sandwich, pickles, corn, peaches, popman's cake.

Wednesday, Feb. 20: Vegetable soup and crackers, salmon salad sandwich, carrots, and celery, gelatin with topping.

Thursday, Feb. 21: Barbecued pork sandwich, sweet potatoes, pears, doughnut.

Friday, Feb. 22: Fish and tartar sauce, green beans, roll and butter, applesauce, cookie.

Milk served with each meal.

WAYNE-CARROLL
Monday, Feb. 18: Sloppy Joe with bun, French fries, baked beans, apple crisp with whipped topping; or toasted cheese sandwich, French fries, baked beans, apple crisp with whipped topping; or chef's salad, roll or crackers, celery sticks, vanilla pudding with cherry topping.

Milk served with each meal.

Tuesday, Feb. 19: Chili and crackers, carrot sticks, peanut butter cup, blueberries, cinnamon roll, or chicken noodle soup, crackers, carrot sticks, peanut butter cup, blueberries; or chef's salad, crackers, carrot sticks, blueberries, cinnamon roll.

Wednesday, Feb. 20: Egg salad and/or peanut butter sandwich, French fries, celery sticks, peaches, cookie; or chef's salad, roll or crackers, celery sticks, peaches, cookie.

Thursday, Feb. 21: Piz-zaburger with bun, green beans, pears, cookie; or beef pattie with bun, green beans, pears, cookie; or chef's salad, roll or crackers, pears, cookie.

Friday, Feb. 22: Fish with roll, mashed potatoes with butter, corn, vanilla pudding with cherry topping; or hot dog with bun, mashed potatoes with butter, corn, vanilla pudding with cherry topping; or chef's salad, roll or crackers, celery sticks, vanilla pudding with cherry topping.

Milk served with each meal.

Monday, Feb. 18: Sloppy Joe, hash browns, green beans, applesauce cake; or salad bar.

Tuesday, Feb. 19: Chicken nuggets, nachos and cheese, French fries, rolls and butter, peaches; or salad bar.

Wednesday, Feb. 20: Cheese pizza/orange juice, Rice Krispie bar; or salad bar.

Thursday, Feb. 21: Spaghetti and meat sauce, carrot and celery sticks, garlic bread, pears; or salad bar.

Friday, Feb. 22: Fish sandwich, lettuce, onion rings, pineapple; or salad bar.

Milk served with each meal.

WINSIDE

Monday, Feb. 18: Sloppy Joe, hash browns, green beans, applesauce cake; or salad bar.

Tuesday, Feb. 19: Chicken nuggets, nachos and cheese, French fries, rolls and butter, peaches; or salad bar.

Wednesday, Feb. 20: Cheese pizza/orange juice, Rice Krispie bar; or salad bar.

Thursday, Feb. 21: Spaghetti and meat sauce, carrot and celery sticks, garlic bread, pears; or salad bar.

Friday, Feb. 22: Fish sandwich, lettuce, onion rings, pineapple; or salad bar.

Milk served with each meal.

Publication features Ponca State Park

Because of the abundance of fossils at Ponca State Park, a paragraph in a new publication of the University of Nebraska-Lincoln Conservation and Survey Division warns: "Do not collect fossils in the park; not only is it illegal, but the fossils serve as educational aids to future students and park visitors."

The publication, "Geology of Ponca State Park, Nebraska," is one of a series of field guides designed for youths and others interested in geology. "Schools, 4-H groups, Girl and Boy Scouts are especially interested in sites in Nebraska where geology and paleontology can be studied," Vincent Dresser, director of the UNL Conservation and Survey Division said, "and this new field guide will be of assistance."

"Ponca State Park in northeastern Dixon County has some important exposures of late Cretaceous age sedimentary rocks that are about 95 million years old," the introduction of the field guide points out.

The rock exposures, as explained in the guide, provide an opportunity to view some of Nebraska's unique scenery and to observe outstanding features of Nebraska's geology and paleontology.

THE 33-PAGE guide's authors are Roger K. Pabian and Dennis E. Lawton, Conservation and Survey Division researchers. They suggest that visitors to Ponca State Park take binoculars and a camera with telephoto and

zoom lenses for recording the trip.

Other features of the park, one of 12 managed by the Nebraska State Game and Parks Commission, are a swimming pool, a shelter house built from large, glacially derived boulders and a suspended oil pipeline across the Missouri River. The pipeline is the longest of its kind in the world, traveling 518 miles from Enid, Okla., to Rock Rapids, Iowa.

Topographic maps showing locations of rock outcrops, a geologic time chart, pictures, diagrams and a geologic bedrock map of Nebraska are included in this publication. Educational Circular No. 6, available for \$3 plus tax at the park or at the Conservation and Survey Division, Room 112, Nebraska Hall, University of Nebraska-Lincoln, Lincoln, NE 68598-0517.

Reward offered

Bill's G.W. is offering a \$500 reward for the arrest and conviction of person or persons who vandalized their garbage truck the night of Feb. 15. Please call the Wayne Police Department with any information 375-2626.

county court

Traffic fines

Kirk E. Griffith, Norfolk, speeding, \$25; John T. Sanders, Grand Island, no valid registration, \$15; Dawn M. Boatman, Wakefield, no operator's license, \$15; Michael A. Jaeger, Winside, careless driving, \$25; Cheryl M. Krusemark, Wakefield, speeding, \$46; Kenneth M. Buse, Wisner, speeding, \$16; Steve Stewart, Waterbury, Nebraska, no valid registration, \$15.

Criminal dispositions

William J. Keller, Wayne, theft by shoplifting, jail two days and costs.

Small claims filings

Tri-County Non-Stock Cooperative Association, plaintiff, against Frank Woehtler, Wayne, \$150, for rental deposit.

Wayne Grain and Feed, Wayne, plaintiff, against Warren and Jean Schultz, Wayne, \$62.94, balance of bill.

Stanley D. Cawner, Wayne, plaintiff, against Robert Lacey, \$811.15, rent, utilities and cleaning. Settled before trial.

Avco Financial Services, Sioux City, plaintiff, against Patrick Murphy, Wakefield, \$153.24; note due. Settled before trial.

Small Claims Judgements

David Baker, Sara Van Varen, plaintiff against Frank Woehtler, judgement for plaintiff, \$175 and cost of \$8; judgement for defendant on counterclaim for \$175 and

Wayne Veterinary Clinic, plaintiff, against Doris Jones, \$118, settled before trial.

Carhart Lumber Company, plaintiff, against Dan Olson, \$174, King of Clubs, for \$1,000. Plaintiff's claim dismissed.

Mary Lou Krusemark, plaintiff, awarded \$382.58 from Cindy Stagle.

Deryl E. Lawrence, plaintiff, against Lee Foote, \$379.44. Settled before trial.

Leigh Crossdale and Marci Nixon, plaintiff, against Bernice Kube and Barb Mitchell, \$70. Dismissed.

Tri-County Non-Stock Cooperative Association against Leon Vondrak, \$779.76, for purchase of merchandise.

Tri-County Non-Stock Cooperative Association against Alan Schrant, \$1,900.04, for purchase of merchandise.

Credit Bureau Services, Inc., plaintiff, awarded \$432 awarded of \$443.78, from Kathryn Billheimer.

Credit Bureau Services, Inc., plaintiff, awarded \$122.65 from Roger Schindler.

obituaries

Marjorie Holm

Marjorie Holm, 77, of Wakefield died Monday, Feb. 11, 1985 at the Wakefield Health Care Center.

Services were held Thursday, Feb. 14 at the Evangelical Covenant Church in Wakefield, The Rev. E. Neil Peterson.

Marjorie Augusta Holm, the daughter of Carl Hjalmer Larson, was born Sept. 20, 1907 at Lincoln. She married Reuben Holm in August, 1929. She graduated from Oakland High School. She taught school in Oakland, Winnebago and Wakefield rural schools. She was a member of the Evangelical Covenant Church in Wakefield, the Central Club and the Covenant Women.

Survivors include one son, Veril of Wakefield; one daughter, Mrs. James (Janice) Thompson of Omaha; four grandchildren, three brothers, Berthel of Emerson, Oliver of Pembina, N.D. and Envor of Emberton, Gaill, and one sister, Mrs. Malcolm (Rosella) Jensen of Emberton.

Pallbearers were Greg Holm, Jeffery Thompson, Larry Jensen, Rodney Larson, Merlin Holm and Ronald Larson.

Burial was in the Wakefield Cemetery with Bressler Funeral Home in charge of arrangements.

Arthur Bronzynski

Arthur Bronzynski, 71, of Norfolk, formerly of Winside and Wakefield, died Thursday, Feb. 14, 1985 at a Norfolk hospital.

Services will be held Monday, Feb. 18 at 10 a.m. at the Christ Lutheran Church in Norfolk. The Rev. John Bass and the Rev. Walter Buss will officiate.

Arthur C. Bronzynski, the son of Albert and Louise Damme Bronzynski, was born Oct. 22, 1913 at Winside. He attended school in Winside. He married Noraena Popelman on June 29, 1939 at Stanton. The couple farmed near Winside and Wakefield until moving to Norfolk in 1965.

Survivors include one son, Marle of Norfolk; one daughter, Mrs. Ronald (Arlene) Temme of Norfolk; two brothers, Carl, Norfolk and Raymond of Golden, Colo.; and one sister, Mrs. Russell (Clara) Kraskeji of Clarkson.

He was preceded in death by his wife on Dec. 22, 1979. Burial will be in the Hillcrest Memorial Park Cemetery in Norfolk with Home for Funerals of Norfolk in charge of arrangements.

Expansion

Continued from page one.

munity and college to have access to nice tennis courts?

In earlier articles, it was reported the financing of the proposed recreation facility would be through short-term financing and long-term bond, possible increase in student fees and a likely user fee.

Space in the new facility will be occupied by:

- A multi-purpose gymnasium, with four four-volleyball courts, four badminton courts and two tennis courts; 1/10 mile cmt; petitive running track; pole vault; long jump; shot put; seating for 300; and areas for special groups/events.

Custodial facilities and storage rooms - control center and two public restrooms.

- Gymnastics/wrestling space, a weight room and a sauna.
- Dance/aerobics space.
- Two meeting rooms.
- And four racquetball courts.

Letters

A sobering experience

Letter to the editor: I have been reading the articles in your paper about the drinking age as well as stories in other papers about teenage drinkers and drinking drivers. From what I read, the age when most kids start to drink is about 13. That is when they make their decision. That is the age when I decided not to drink and I'll tell you about it. We were living on the farm just west of the park at Wakefield. We had a cattle feedlot just north of the park where the swimming pool and ball diamond are now. An alleyway about 20 feet wide ran along the west side of the park from the feedlot to the loading chutes southwest of the park. The hog yard was just west of the alleyway. One Sunday morning, the summer I was 13, I walked along the west side of the park to hunt back to the house in the alleyway right along the hog yard fence lay a young fellow, maybe 18 or 19 years old, dead drunk. On the other side of the fence were several 250 pound hogs with their noses through the fences smelling him. He smelled pretty strongly of "corn likker". He hurtled back to the house to tell my father about it. He said "You get right back down there and see that he doesn't get up and get over the fence in with the hogs or they'll eat him". We didn't know who the fellow was so Dad contacted the town marshal who came about an hour later to get him and put him in a place where he could sober up, about getting in the hog yard. This was in Prohibition times when it was illegal to buy, sell or drink alcoholic liquor and my folks had told me about the problems of drinking but as I stood there for that hour watching that fellow so he wouldn't get in with the hogs, I made up my mind I didn't want anything to do with anything that would put me in such a condition. Even now more than 40 years later, I think what if I had found his remains in the hog lot with 100 hogs picking him to pieces, maybe a couple rolling what was left of his head around? It still scares me. I know few teenagers nowadays would ever have an experience such as I, but surely if they have any smarts at all they can see what can happen when people drink and drive. Recently I heard of a father who gave his son a car on his 16th birthday. Every night the boy was out with his car. He had it about a week when he ran into a tree, killing himself and his girlfriend - he had been drinking. His girlfriend's parents wouldn't believe the policeman who came to tell them that there daughter was dead because they thought she was in her room - but they found out that she had sneaked out to go with her boyfriend. The breweries don't put scenes like that in the TV commercials. Come on you kids. Why don't you wake up and die right. Bob Beckenhauer

Free market - good or evil?

Letter to the editor: I think a few comments are in order in reference to the "Free Market" article by Richard Leshner, President of the U.S. Chamber of Commerce, that appeared in the Feb. 11 issues of The Wayne Herald. In discussing governmental policies of the early 1980s, Mr. Leshner advocates placing faith on the workings of the free market instead of relying on the decision of government bureaucrats. In his discussion, Mr. Leshner notes that, "The free market is a powerful force." True enough! But is it a powerful force for good or evil? That is, should we rely on the free market to solve all cases of fundamental economic policy? Before we answer yes to this question, we should consider the following cases, and the list is far from complete. We should immediately end all price supports and let farm prices fluctuate according to the forces of supply and demand. Let those farmers who can't survive go bankrupt. They can find jobs elsewhere. We should make labor unions illegal. That is, forbid them from combining in any way to change the price of labor offered on the free market. We should repeal the Price-Anderson Act. This Act, passed in 1957 by the federal government, insures public utilities against nuclear accidents. However, public utilities want to generate electricity from nuclear plants and want insurance, let them go to the private professional insurance industry. My understanding is that they did this. The premiums suggested by the insurance companies were so high that the utilities would not have been able to produce electricity at competitive rates and to claim that nuclear power is "cheap". Instead, they successfully lobbied Congress and got the taxpayer to foot the bill. Speaking of public utilities, we now come to a real problem - where is the "Free market" in the case of public utilities? In those cases where natural monopolies exist, such as in the railroad, telephone, electric and water industries, it would be either impossible or far too expensive to have the free market to provide the services. The competition of several hundred railroads, telephone companies, electric companies and water companies all competing in the same market area. Thus, the free market is no help here, and that is why the consumer is protected, supposedly, by Commissions from the monopoly power of corporations in this sector of the economy. And then of course, historically, America has not always relied on the free market. Again, it was the federal government that subsidized the building of the transcontinental railroads, in the last half of the 19th century. We should repeal the Pure Food and Drug Act. Let the free market decide on the quality, quantity, and purity of all food and drugs offered on the market. Let free enterprise be free to sell any kind of "medicine" it wants to. We have already tried this with pretty poor results. For example, crude petroleum was bottled and sold extensively back in the 1800s as "American Medical Oil." Should we let the free market regulate the pharmaceutical industry? Wouldn't there then be many more cases similar to that of the marketing of the Dalkon Shield? In this situation Judge Lord stated that over 9,000 women claimed that they gave up part of their wombhood to that racket. The corporation, according to the Judge, "planted in the bodies of these women instruments of death, of mutilation, of disease." The remedy of the free market: not to buy that product from that manufacturer again, is certainly a poor one! Therefore, in conclusion, it has been my hope that the American Medical Oil should be put in the past. The corporation, according to the Judge, "planted in the bodies of these women instruments of death, of mutilation, of disease." The remedy of the free market: not to buy that product from that manufacturer again, is certainly a poor one! However, without investigation we can easily determine whether a sin occurred? Assistant Professor of Economics, WSC

There are lots of good habits that, through experience, can make an individual a good photographer. Photographers can have bad habits too. My wife is a perfect Valentine for enduring my flaws. But sometimes she just doesn't understand the reasons when I come home with mud on my shoes or grass stains on the pants, she just purchased for me at a local clothing store. Over the years I have mellowed and controlled my battle for the perfect picture. We learn from experience.

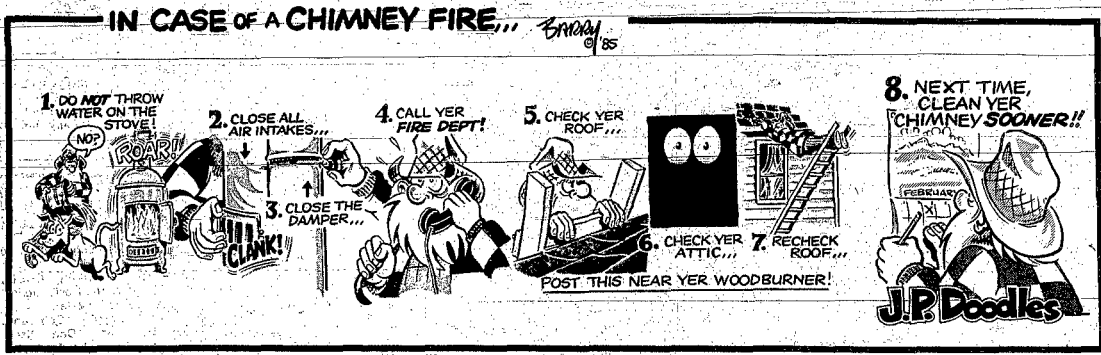
In my previous newspaper position in Dyersville, Iowa, I had an assignment to take some real estate advertisement photos of an acreage. This was in early spring when rainfall seemed abundant at the time. First thing after getting out of the realtor's car (parked on a gravelled road) was to cross a ditch of tall weeds. Nobody told me those weeds were hiding Lake Superior. Water went up to my knees. Since my shoes and pants were ruined, we decided to go on ahead and take pictures of the section. After tearing my pant leg on the fencing -

one step into the field and it was instant-quickstand. The real estate agent almost had to hook a chain to his car and pull me out. Actually, I was lucky he gave me a ride back in his nice-looking car. My shoes were heavy with mud. Another time I was shooting some promotional pictures in a department store. We photographers like to be creative now and then and I was trying to capture a bird's eye view of the whole store - standing on what appeared to be strong support 10 feet above the floor. It wasn't and I crashed through the support, landed on my back. They asked me to sit in a chair and fill out a form at the hospital. It was painful. I was bleeding and needed a couple stitches and had two small bones broken in the lower back area. But I still got the picture. My wife doesn't like to ride in the car with me whenever I take the camera along. I guess it's a matter of me going all over the road and making her nervous.

I DON'T REALLY intend to do it. It's just that my eyes are always looking around for something out of the ordinary, something that would appeal to the readers; and more so than not the car moves a bit from one side to another. She doesn't seem to mind it as much as before. We were driving in Phoenix last February and this guy in an old car ahead of us slams on the brakes, rolls down his window and takes a photograph of a cactus. Didn't pull off to the side or nothing. When the snapshot was taken the guy kept on driving like nothing happened. There have been times when, in my haste, I had raised the camera to my brow and forgot to take the lens cap off (but only for a second) and the subject jokingly reminds me to remove it. One time I had intended to shoot an event only to open up the backing and see that there was no film loaded at all into the camera. I like to go and shoot pictures under adverse weather conditions. If the dark clouds look scary in the summer and are dark, I like to stand outside and photograph until the raindrops start to fall. Usually I

don't make it to the house. Lightning, although I don't recommend standing outside and capturing it on print because it is too dangerous, is usually photographed from inside. Adventurous, perhaps. But some people might call it crazy. Pictures taken on foggy days or a frosty morning are a challenge to me. I like to snap pictures of the unexpected - when people turn around and face me only after they have heard the shutter click. A good newspaper photographer should not be afraid to crawl on their belly to come up with a unique picture. They should have the patience to wait for the precise time to push the camera's shutter release. They should know that more than one picture of a subject or object is practical more than wasteful - because you never know who might have their eyes closed. Photographers should develop an eye for pictures. My wife has another name for this - she calls it "gawking" at things. She may be right at that. Photographers can be the most terrible gawkers in the whole world.

by Chuck Backenmiller



A national emergency Ag crisis affects everyone

We now face a critical national emergency in agriculture and still most of the nation remains unaware of the wave of tragedy that appears ready to cascade across America's heartland. Unfortunately, too many people in this country believe that the health of the agricultural economy does not affect them personally. Yet history has provided us with a great lesson if we would but consult it. It was the collapse of the agricultural economy, leading to dispersal of land and equipment, which signaled the beginning of the great depression. At that time, there was a domino effect from the collapse of agriculture which brought this country virtually to an economic standstill. As more and more farm land was forced on the market, land values and equity for everyone fell drastically. As land values fell, more and more banks were unable to remain in operation. As banks failed, more and more businesses were placed in jeopardy. As should be apparent, a failure in agriculture has a tremendous effect that ripples throughout the economy. Despite history, there are many who believe that this won't happen again because not as many people are dependent upon agriculture for their main support. However, the economic health of this country as a whole remains very much dependent upon the health of the agricultural sector. Agriculture remains the backbone of this country. THE NATION'S BIGGEST industry is agriculture, with farm assets totaling over \$1 trillion and representing approximately

70 percent of the capital assets of all manufacturing corporations in the U.S. Not only is agriculture the biggest industry it is the nation's largest employer, with 22 million people working in some phase of agriculture. Farming, alone, has as many workers as the work forces of transportation, the steel industry, and the automobile industry combined. Approximately one out of every five jobs in private enterprise is dependent upon agriculture. Agriculture, alone, generates about 20 percent of the gross national product. The agricultural sector uses output from more than 80 percent of the other basic industries in the U.S. Farmers are the fourth largest customer of the finance and insurance industry and the fourth largest user of real estate and rental services. Farmers annually spend over \$10 billion for farm tractors and other motor vehicles, machinery, and equipment. This alone provides jobs for about 150,000 employees. Farming also uses more petroleum than any other single industry with annual expenditures for fuel, lubricants, and maintenance for machinery and motor vehicles used in the farm business amounting to \$15.4 billion. Each year, farmers purchase \$21.4 billion for feed and seed and \$9 billion for fertilizer and lime. Farmers use 300 million pounds of rubber each year. Farmers annually purchase 6.5 million tons of steel in the form of farm machinery, trucks, cars, fencing and building materials. Farm use of steel provides for 40,000 jobs in the steel industry. Agricultural exports, alone, have a considerable impact upon the economy. In 1984, the overall trade deficit was reduced by the

\$19 billion agricultural trade surplus. For every \$1 billion in agricultural exports, 35,000 jobs are created. Each dollar of agricultural exports stimulates an additional \$1.05 of output in the U.S. economy. About 70 percent of this additional economic activity accrues to nonfarm sectors of the economy. AGRICULTURE is critically important to our nation's economy. A thriving agricultural economy means a thriving American economy. A depressed agricultural economy translates into a depressed American economy. For the past few years, several of us have tried to warn the Administration about the ultimate effects of the agricultural crisis, but our words were unheeded. Too many thought the problem would just go away, would take care of itself. Regrettably, that's not the way it works. There is, and has been, a crisis in American agriculture for the past 50 years. Today, the crisis has spread to the banking industry, just as it did over 50 years ago. Today, we not only have a crisis in agriculture, we have a crisis in banking. Over the past five years, we have seen an increase in farm bankruptcies and forced liquidations of over 200 percent. During the decade of the seventies, 21 percent of the farmers in my home state of Oklahoma went out of business. For the same period, the number of farms in Iowa were decreased by 12,000. For Nebraska, there were 8,000 fewer farms in 1980 than in 1970. So what, some may say. Secretary Black has made the comment that this is not an unusual trend, that it has been happening for the past 50 years. Yes,

farm numbers have declined steadily over the past 50 years. However, right now, we are experiencing a time where the number of farmers going out of business in one year is equivalent to or greater than the number of farmers that went out of business during the entire decade of the seventies. The situation we are confronting in agriculture constitutes a critical national emergency. This is not true merely from the standpoint of the farm, but also from the standpoint of every citizen in this country. I do not believe the American people will allow the impending agricultural collapse to happen if they are aware of the ramifications, if they are aware of the facts. For the past six years, I have done everything I know to provide these facts to the general public. Yet, repeatedly over that time period, I felt as though no one were listening, as though the press in our large cities did not care to report what was happening to the backbone of this nation. Finally, we are beginning to see some interest in the agricultural crisis. We do have a crisis and the American people need to be aware that the crisis is threatening the entire structure of rural America and placing in jeopardy the American economy as a whole. Hopefully, with constant effort and thoughtful reflection, we can arrive at a solution that will put American agriculture back on its feet. Emergency action will not wait. Action on the credit front must be taken now. Unless the emergency is confronted now, the questions of long range solutions will become moot. By Senator Boren, a Democrat representing Oklahoma.

Economic stability linked to agricultural economy

If there was ever a doubt that Nebraska's financial system and its agricultural economy are inextricably tied to each other and to the health of the whole state, the past couple of years have laid that to rest. Closed financial institutions across the state have prompted out-cries from depositors and lenders alike. The Nebraska Legislature is being asked, and rightfully so, to address the problems that result from financial institution failure. Nebraska's who were affiliated with financial institutions in Cody, Verdigris, Niobrara, Uehling, Darnsbrog and Lincoln (Commonwealth) as well as Nebraskans living in and around these communities have experienced very real pain. In response to the needs of both the individuals and the communities, several proposals have been offered to the Legislative body this year. Some proposals address the financial crisis as a whole; others address specific concerns of depositors who have

lost their investments or borrowers who have lost their investments or lost their capital and are now finding it very difficult to find refinancing. DEPOSITORS, BY THE way, include the State itself. The State of Nebraska had \$500,000 deposited in both Darnsbrog and Uehling, but with FDIC accounts insured only to \$100,000 the State lost \$400,000 in each. In response to the Commonwealth crisis, we have already voted on a resolution to support a bail out plan that would pay the depositors \$20.5 million. I did not personally support this resolution in that I feel the State should pay only an amount that the courts deem to be the State's legal liability. However, the body did approve the resolution. The proposal has been sent to the depositors for their approval. It will open the door for a court determination. There was a flurry of activity at the end of this last week when LB295, the branch banking bill was introduced. This bill would change the allowable structure by which banks can operate in this state. Proponents described the bill as necessary to provide the feasibility of larger and stronger banks

to buy up failing banks before they actually fail. IN ANOTHER action taken this week, one that addressed the \$800,000 lost by the State in the above mentioned banks, the Banking Committee voted to bring suit against the FDIC for discriminatory practices in the way they have arbitrarily bailed out some institutions and not others. I believe that the State should do whatever is economically feasible in attempting to recover the lost funds and proceed with the suit if legal counsel feels it to be appropriate. With these as well as with many proposals yet to come, we must proceed with caution. Proposals should not only be considered in their ability to resolve current crises; they must also be considered in the long-term best interest of our citizens. In reacting to the serious problems of today, we must remember the need for our future economic stability.

Letters from readers are welcome. They should be timely, brief and must contain no libelous statements. We reserve the right to edit or reject any letter. Letters may be published with a pseudonym or with the author's name omitted if so desired. However, the writer's signature must be a part of the original letter. Unsigned letters will not be printed.

THE WAYNE HERALD
PUBLICATION NUMBER - USPS 670-540
Serving Northeast Nebraska's Great Farming Area
Publisher - J. Alan Cramer
Managing Editor - Chuck Backenmiller
Assistant Editor - Lavon Anderson
Sports Editor - Jackie Osten
Business Manager - Jim Hirsch
Advertising Executive - Bob Dieckman
Circulation Manager - Jackie Osten
Bookkeeper - Linda Granfield
Typesetter - Alyce Henschler
Composition Foreman - Judi Topp
Composers - Trudy Pule, Lori May
Press Foremen - Ray Murray
Pressman - Al Eppitt, Jeff Sperry
Commercial Printer - Mat Baumgardner
Hallroom Manager - Doris Cluisan
General Assistant - Betty Ulrich
114 Main Street, Wayne, Nebraska 68787, Phone 375-2600
Established in 1875; a newspaper published semi-weekly, Monday and Thursday (except holidays), by Wayne Herald Publishing Company, Inc., J. Alan Cramer, President, entered in the post office and 2nd class postage paid at Wayne, Nebraska 68787. POSTMASTER: Send address change to The Wayne Herald, P.O. Box 71, Wayne, NE 68787. Official Newspaper of the City of Wayne, the County of Wayne and the State of Nebraska. SUBSCRIPTION RATES: In Wayne, Pierce, Cedar, Dixon, Thurston, Cumming, Stanton and Madison Counties, \$14.99 per year, \$11.98 for six months, \$10.18 for three months. Outside counties mentioned: \$17.00 per year, \$14.00 for six months, \$12.00 for three months. Single copies 25 cents.

4 - speaking of people

The Wayne Herald, Monday, February 18, 1985

Speaking

Jensons celebrate 50th

Mr. and Mrs. James Jenson of Wausau were honored for their golden wedding anniversary during a dinner recently at the Holiday Inn in Norfolk.

Attending were Keith Jenson of Wausau, Mr. and Mrs. Mel Jenson and family of Enola, Mr. and Mrs. Norman Jenson and family of Winside, Mr. and Mrs. Robert Reed and family of Norfolk, and Mr. and Mrs. Dan Nielsen and family of Battle Creek.

The grandchildren presented the couple with gifts. Mrs. Karl Frederick of Winside baked and decorated the anniversary cake.

Jensons were married at the Osmond Immanuel Lutheran Church on Feb. 10, 1935. They have five children, 16 grandchildren and three great grandchildren.

An open house in their honor is scheduled April 21 at the Wausau auditorium.

55th anniversary observed

Mr. and Mrs. Herbert Echtenkamp of Wayne were honored Feb. 10 for their 55th wedding anniversary.

Friends and relatives came from Kansas City, Lincoln, Fremont, Norfolk, Oakland, Laurel, Pender, Carroll, Lexington, Hoskins, Wakefield and Wayne.

Hosts were the couple's children, Mr. and Mrs. William Kinslow, Mr. and Mrs. Ron Duffek and Jennifer, Mr. and Mrs. Marshall Russell, Mr. and Mrs. Charles Messerschmidt, Carla and Kelly Messerschmidt.

Laurel poetry, poster winners

Winners have been announced at Laurel-Concord School for a poetry and poster contest. They were "Nebraskans: A Human Rainbow."

First place winners in the poster contest were Theresa Baumgardner, K-3; Jonathan Ebmeier, 4-6; Jim Graf, 7-9; and Nancy Christenson, 10-12. Second place went to Gina Monson, K-3; Heather Heller, 4-6; Patty Stone, 7-9; and Michelle Loberg, 10-12.

Receiving first place for their poetry were Emily McBride, 7-9 grade, and Wendy Robson, 10-12 grade. Second place poetry winners were Jennifer Lipp, 7-9; and Jim Pehrson, 10-12.

First place winning entries will now compete at the district level. Winners also will receive a \$5 gift certificate from the Laurel-Concord Education Association.

Second place winners receive \$3 gift certificates.

Anniversary dance for Erwins

Pat and Ruth Erwin of Wakefield will celebrate their 35th wedding anniversary with a dance on Saturday, Feb. 23 from 8 p.m. to midnight at the West Randolph Ballroom.

All friends and relatives are invited to attend the free dance, with music provided by Donna Bourn.

Concord church marking 100th

Plans are underway for the centennial celebration of Concord Lutheran Church-LCA of Concord. Dates for the celebration are Saturday evening and Sunday, May 25-26.

The century-old church was founded on May 27, 1885 in the railroad depot in Concord where services were held until a church could be built. Thirty-one charter members, mostly of Swedish descent, became the foundation of this small community church.

All former members, former pastors and present members, as well as community friends, are invited to participate in the two-day celebration which will include a dinner on Sunday noon, May 26.

Further details regarding the celebration will follow in the months to come.

Roving Gardeners dinner

Roving Gardeners Club members and their husbands enjoyed a Valentine's Day dinner at the Black Knight. Afterward, the group traveled to the Russell-Luit home for cards.

Receiving card prizes were Lorene and Fred Gildersleeve, Bernice Damme, Ivan Frese and Russell Luit.

New club books were distributed, and a cooperative lunch was served at the close of the evening.

Next regular meeting is scheduled March 14 in the home of Ruth Baler.



Photography: Chuck Hackenmiller

Jaycee Women honor first baby

YOUNG KATIE MARIE BOSE, daughter of Mr. and Mrs. Marlin Bose of Wakefield, was the first baby born at Providence Medical Center in Wayne during National Jaycee Women's Week. Katie is pictured with

her mother. Also pictured is Mindy Luit who, on behalf of Wayne County Jaycee Women, presented little Katie with a T-shirt inscribed with "Future Jaycee Woman."

Conferences focusing on home-based businesses

"Start and Succeed" is the theme of two upcoming conferences designed to help persons who want to extend their income by starting a home-based business.

The conferences, scheduled March 11 and 12 in Neligh and O'Neill respectively, will be conducted by University of Nebraska extension specialists and will include panel discussions with persons who have or are presently operating home-based businesses.

The one day sessions will cover such topics as record keeping, marketing the product, pricing, and legal issues.

"WORKING OUT of one's home is not for everybody," said Janet Wilson, extension consumer education specialist.

"Certain personal qualities are

necessary to make such a business successful, and those interested must take a long, hard look at themselves."

Wilson said several questions must be faced objectively. Are you a self-starter? Are you a good record keeper? Are your family members willing to put up with some discomfort and disorder for the sake of the business?

ALSO NEEDED, according to Wilson, is a comprehensive analysis to transform an idea into a working operation.

She added that a business plan, including a written, working document describing the creation of the business, and the steps needed to be successful, can assist persons in securing needed physical and financial resources; help analyze the market; and identify needed financial data.

THE CONFERENCES will be held March 11 at the Interior Art Steakhouse in Neligh and March 12 at the Townhouse Inn in O'Neill.

Conducting the Neligh conference will be Leone Brodbeck of Neligh. The O'Neill conference will be led by Monica Braunt of O'Neill.

Both sessions will begin with registration at 9 a.m. and continue through 3 p.m. A \$15 registration fee includes conference materials and lunch.

Registrations will be accepted on a first-come basis, with a minimum registration of 20.

Area residents who would like to register to attend a conference at either location are asked to contact their local cooperative extension service office.

Community calendar

- MONDAY, FEBRUARY 18:**
Monday Mrs. Home Extension Club, First United Methodist Church
Acme Club, Betty Wright, 1 p.m.
Three M's Home Extension Club, Marj Porter, 7:30 p.m.
Alcoholics Anonymous, Campus Ministry basement, 8 p.m.
- TUESDAY, FEBRUARY 19:**
Sunrise Toastmasters Club, community room, 6:30 a.m.
LaPorte Club carry in family dinner, Alma Luschen, noon
Progressive Homemakers Club covered dish dinner, Irene Reibold, 12:30 p.m.
Pleasant Valley Club, Ida Bichel, 2 p.m.
Villa Wayne Tenants Club weekly meeting, 2 p.m.
Tops 782, West Elementary School, 6:30 p.m.
- WEDNESDAY, FEBRUARY 20:**
Villa Wayne Bible study, 10 a.m.
Just Us Gals Club, Clara Spahr, 1:30 p.m.
Tops 200, West Elementary School, 6:30 p.m.
Wayne Alcoholics Anonymous, Pike Hall, second floor, 8 p.m.
Al-Anon, City Hall, second floor, 8 p.m.
- THURSDAY, FEBRUARY 21:**
Theophilus Ladies Aid, Ruby Ritze
Happy Homemakers Home Extension Club, Mildred Jones, 1:30 p.m.
- FRIEDAY, FEBRUARY 22:**
Alcoholics Anonymous, Fire Hall, second floor, 8:30 a.m.
- MONDAY, FEBRUARY 25:**
Minerva Club, Minnie Rice
Alcoholics Anonymous, Campus Ministry basement, 8 p.m.

GRIESS REXALL COUPON

Developing & Printing COLOR PRINT FILM

12 Exposure Roll	\$3.19
15 Exposure Disc	\$3.69
24 Exposure Roll	\$5.99
36 Exposure Roll	\$7.59
Movie & Slide (20 Exp.)	\$2.39
Slide (36 Exp.)	\$3.89

includes all popular film - C-41 process.

ONE-DAY SERVICE Monday thru Thursday
Exp. Date: March 3, 1985

Nelsons celebrate diamond anniversary at Plainview church

Plainview residents Mr. and Mrs. Carl W. Nelson observed their 60th wedding anniversary during an open house reception held Feb. 10 at Our Savior's Lutheran Church in Plainview.

Approximately 125 friends and relatives attended the event which was hosted by the couple's children and their families.

Helen Franzen, born April 2, 1905 in Wayne County, and Carl W. Nelson, born Feb. 25, 1901 in Kristianstad, Sweden, were married at the Redeemer Lutheran Church parsonage in Wayne on Feb. 11, 1925 with the Rev. H. A. Teckhaus officiating.

They farmed in the Carroll and Wayne area before moving to a farm near Osmond in 1965. They retired to Plainview in 1972.

THEIR CHILDREN include Carl B. Nelson of Plainview, Mrs. Melvin (Margaret) Korn of Wayne, Mrs. Eugene (Daisy Lee) Shores of Camarillo, Calif.; Gary O. Nelson of Wakefield; Mrs. James McKillip of Neligh; and Mrs. Steven Poirer of Creighton. Mrs. Shores was unable to attend. There are 22 grandchildren and 17 great grandchildren.

GRANDCHILDREN were seated at the guest book for the diamond anniversary celebration.

They also arranged gifts, served coffee and punch, and assisted at the serving table.

Mrs. James McKillip baked and decorated the anniversary cake, and Mrs. Carl B. Nelson made the floral centerpiece.

A brief program was presented with Carl B. Nelson in charge. Pastor Franke had prayer and spoke briefly.

Karen Hughes gave a review of the life of Carl and Helen, and Amy Nelson read a poem, entitled, "Yesterday."

Auxiliary presents pin to Buddy Poppy girl

The Llewellyn B. Whitmore VFW Post 5221 Ladies Auxiliary met Feb. 11 in the Wayne Vet's Club room with 13 members attending.

Darlene Draghu called the meeting to order.

Betty Heilhold, buddy poppy chairman, presented a buddy poppy pin to Amy Jenkins, daughter of Mr. and Mrs. Robert Jenkins of Wayne. Amy was the Buddy Poppy girl for the past year.

Eveline Thompson reported 73 paid-up members. She also announced that work is beginning on the new publicity book.

HELEN SIEFKEN, rehabilitating chairman, reported that Valentines were sent to the shut-in members.

BEFORE ADJOURNING, auxiliary members voted to make a monetary donation to the Camp-A-Vet program.

Hostesses were Verna Mae Longe and Glennadine Barker. Next meeting date is March 11 at 8 p.m. in the Vet's Club room.

new arrivals

LAWRENCE - Marc and Doreen Lawrence, Crete, a son, Kiel Alvin Ellis, 7 lbs., 8 oz., Feb. 12, Crete Hospital. Grandparents are Mr. and Mrs. W. E. Hanson, Concord, and Mr. and Mrs. Deryl Lawrence, Wayne. Great grandparents are Oscar Johnson, Thelma Hanson and Ruby Schuster, all of Laurel, and Viola Lawrence of Wayne.

news and notes

many terms
division agent-home economics



Keep your smile! February is Children's Dental Health Month. You can help your children eat to keep their teeth. Of course, avoiding sweet and sticky snacks is important. But did you know that eating cheese is a good dental habit?

Eating cheese? Research being conducted at the University of Minnesota is indicating that some kinds of cheese actually protect teeth against cavities.

The three types of cheese which seem to offer the most protection include aged cheddar, swiss and Monterey jack.

In addition to protecting teeth, cheese also is a good source of calcium. This nutrient is essential for the development of strong, healthy teeth. Calcium is found in all dairy products.

OTHER GOOD snacks for promoting dental health are nuts, fresh vegetables and popcorn.

If you must eat sweets, it is best to eat them with a meal and remember to brush your teeth afterward. Bacteria will produce tooth decaying acid in the mouth for at least 20 minutes after eating sweets.

Additional dental health habits will help you and your children keep your smiles. Each time you visit a dentist, proper brushing and flossing is stressed. It may begin to sound like a broken record, but these are important habits to establish.

The bacteria in your mouth converts carbohydrates into acids that dissolve tooth enamel. Carbohydrates are present in a large majority of the foods and beverages we consume.

It's a simple process. We eat, bacteria forms acids, and acids attack teeth. The only solution is to remove the bacteria and break the chain.

BRUSHING AFTER every meal to remove plaque and bacteria is your first line of defense.

If a fluoride toothpaste is used, you benefit from its protection. Your dentist also will remind you that flossing daily is vital to thoroughly cleaning your teeth.

WERE FIGHTING FOR YOUR LIFE

American Heart Association
Nebraska Affiliate

U.S. Government Guaranteed

11.10%
Guaranteed on principal & interest

FDIC Insured CDs

11.00%
Restrictions may be subject to state of legal residence

Investment Grade Corporate Bonds

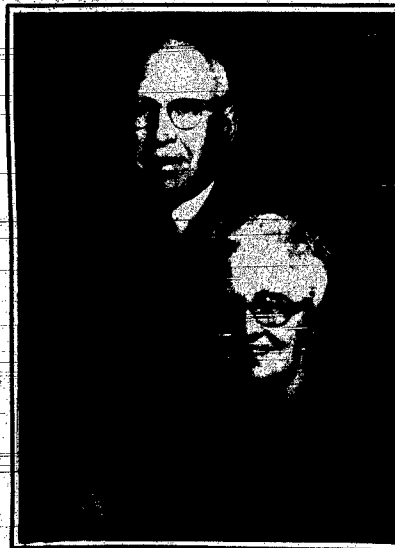
12.00%

Insured Federal Income Tax-Free Municipal Bonds

9.25%
Interest may be subject to state & local taxes

ISA and RESPA Approved Plans

12.00%
Based on Annual Open Rate



Observing golden year

MR. AND MRS. HARRY Dellin of Wakefield will celebrate their golden wedding anniversary on Sunday, Feb. 24 from 2 to 4 p.m. at St. Paul's Lutheran Church in Emerson. There will be a brief program at 3 p.m. All friends and relatives are invited, and the couple requests no gifts. No other invitations are being issued.

NANCY BOUNDS SELF-IMPROVEMENT AND MODELING SCHOOL

Can Help You With Professional Guidance, Training and Support.

Our Curriculum includes:

- Complete fashion awareness
- Posture/poise
- Complete hair care
- Positive thinking
- Hairstyling
- Accessorizing your wardrobe
- Colors
- Weight control
- Manners and etiquette
- Communication skills
- Modeling techniques
- Public speaking

BEFORE **AFTER**

These classes are for women of ALL AGES or any lifestyle! Improve your total image with our complete 8 month program that not only gives you professional advice and guidance but the RESULTS YOU WANT TO ACHIEVE!

For a COPY OF OUR BEAUTIFUL, YOU WANT AND OWE!

For More Information Call 375-1279
Evening Classes Starting Soon - Limited Enrollment

Director Mary Demerath Director Paula Chamberlain

Edward D. Jones & Co.
Investment Services

Call or drop by my office for more information.

PAULA PFLUEGER
307 Pearl
Wayne, NE
375-4172

Real Estate - Not a Broker

Winside's Thies in championship finals

Four area wrestlers survive to final round in battle for placings

The 1985 edition of the Nebraska state wrestling tournament in Lincoln provided fans of area mat action with some pleasant and not-so-pleasant surprises going into Saturday's final round at the Bob Devaney Sports Center.

A total of 11 wrestlers representing Wayne and Winside made the trip to the state meet, and at the end of competition on Friday four were headed into final round action to begin Saturday morning.

Those four included Winside's Jeff Thies, Mace Kant, and Doug Paulsen, along with Wayne Blue Devil Kevin Koeng.

At the end of Friday's matches, Wayne was listed in 28th place in the Class B standings, while Winside had moved up a notch from eighth to seventh place among the leaders in Class D.

DEFENDING STATE champion Kevin Koeng saw his hopes for a title repeat at 185

pounds ended on Friday when he was pinned in his semi-final round match by Kevin Hopkins of Gering at 5:37. Koeng had defended his undefeated status successfully up until that time, opening the tournament with a pin at 1:27 over Daryl Stuart of Central City on Thursday.

In the quarterfinals, Koeng won a 9-0 decision over Ken Highley of Cozad to advance to the semi-finals. Following the pin, Koeng forfeited his consolation semi-final match against Brad Ferguson due to health reasons. It was not known at press time if Koeng would be able to wrestle in his fifth place match Saturday morning.

Advancing to the championship finals was Winside's Jeff Thies at 185 pounds. Thies, who placed third in the weight class last year, was slated to go up against defending champ Wayne Lienemann of Wilcox. Going into the match, Thies held a 28-1 overall record.

Enroute to this championship match, Thies took a 7-0 decision over Tony Eynelich of Sargeant in his initial match on Thursday and made it through the quarterfinals with a pin over Matt Davis of Oshkosh at 3:09 on Thursday night. Thies earned his way into the finals with a pin in his match with Don Brita at 16 seconds for the fastest pin at the state tournament up to that point.

AT 98 POUNDS, in Class D, Mace Kant was scheduled to go up against Scott Cool of Arnold in the third and fourth place match Saturday morning. Kant, with a 26-7 record going into the final match, started the tournament with a 12-4 decision over Greg Bobbert of Humboldt on Thursday morning. In his quarterfinal round match, Kant fell in a 6-1 decision to Greg Lave of Amhurst and dropped down into the consolation bracket.

In the first round of wrestlebacks, Kant carded a pin at 1:58 over Koy Stollmeier of

Calloway and advanced to the second session where he took a 7-4 decision over Ken Ksiazek of Clarks.

Kant won his consolation semi-final match with a narrow 2-0 decision over Mike Walkowiak of Greeley Friday evening.

The third Winside wrestler with hopes for a medal in Saturday's action was Doug Paulsen at 105 pounds. Paulsen started his first state tournament action with a pin at 2:20 in a match with Kurt McWilliams of Crawford before advancing to the quarterfinals where he picked up his second pin at 3:59 over Terrance Burns of Ansley.

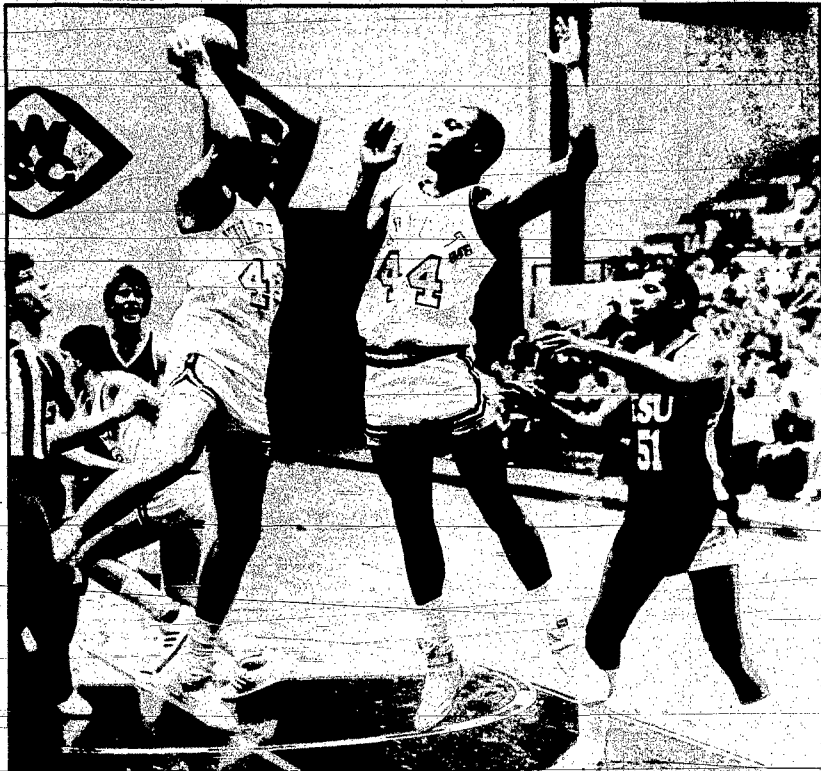
In the semi-finals, Paulsen lost to Roby Brunning in overtime by a criteria decision, but came back to win in the second round of wrestlebacks with a 2-1 overtime decision over Eric Kluthe of Elgin Pope John.

Paulsen was slated to tangle with Martin Thoen Dahl of Waterloo in the third place match on Saturday.

OTHER AREA WRESTLERS who were eliminated from the tournament in earlier action and their results are listed:

WAYNE HIGH BLUE DEVILS
 112 pounds — First round, Mark Janke lost by pin of 55 seconds to Russ Schmidt of Fairbury; first round consolation, Janke lost 6-1 decision to Mike Schoonauer of Gering.
 130 pounds — First round, Todd Dorsey won 4-2 decision over Jay Rainforth of Wood River; quarterfinals, Dorsey lost 4-2 decision to Ed Weldon of York; first round consolation, Dorsey lost 16-2 decision to Jerry Hoffman of Ogallala.
 167 pounds — First round, Tim Book lost 6-1 decision to Scott Rand of Alliance; first round consolation, Book won 13-8 decision over John Bockweller of Broken Bow; second round consolation, Book lost a 9-5 decision to Steve Pierce of Nebraska City.

WINSIDE WILDCATS
 126 pounds — First round, Darin Schellenburg lost 25-5 decision to Mike McLeod of Amhurst.
 155 pounds — First round, Mike Jaeger won with a pin at 2:18 over Sheldon Bruha of Dorchester; quarterfinals, Jaeger lost 14-2 decision to Dirk Porach of Mullen; consolation, Jaeger lost 8-4 decision to Matt Anderson of Axtell.
 167 pounds — First round, Mike Woerdemann won 22-0 decision over LaVern Banzhas of Cambridge; quarterfinals, Woerdemann lost 10-3 decision to Norm Brandt of Friend.
 Heavyweight — First round, Chris Jorgensen was pinned at 32 seconds by Paul Shmek of Crawford; consolation, Jorgensen was pinned at 46 seconds by Dale Waggoner of Eustis.



WILDCATS VINCE Tillo and Calvin Sprew sky for a rebound. (photography: Jackie Olson)

Wildcats score upset win over tough 20-5 Emporia

The Wayne State College Wildcats notched their fourth win in the Central States Intercollegiate Conference Friday night with a 78-76 upset of previously ranked Emporia State in Rice Auditorium.

The Hornets took the lead briefly, 59-57, on a breakaway layup by their leading scorer, Brian Robinson. The Wildcats regained the upper hand on a shot by John Thomsen off an offensive rebound with 7:47 on the clock.

think that we handled the end-of-the-game pressure very well.

"Emporia is not a deep team, and we were hoping to get their big men into foul trouble early, which is what happened," Weaver added.

"It's a big win and we're really happy with it," said WSC men's Coach Rick Weaver. "The game was a balanced team effort and I'm pleased with that."

It remained a two to four point ball game down the stretch with WSC heading into their stall game with three minutes left. After running nearly a minutes off the clock, senior Tracy Penn drove the lane and laid in a bucket which put WSC up by four points with 2:17.

WSC shot 49 percent in the game, hitting 34 of 69 shots from the floor. ESU ended the night at 55 percent with 33 of 60 shots. From the line, WSC converted 10 of 14 shots for 71 percent while Emporia was 10 of 17 for 58 percent.

The Hornets were 20-5 overall coming into the game and 5-4 in the CSIC while WSC continues to flirt with the .500 mark with a 12-13 overall record and a 4-7 CSIC card.

Ed Heritage hit a pair of clutch free throws in the closing minute and a half to seal the Wildcat upset win.

The Cats were to host Washburn University in the second half of a men's-women's doubleheader Saturday night, with the game beginning at 7:30 p.m.

"THE KEY FOR us was to get up by 10 and then work our way through a point mid-way into the second half where we get sluggish and sometimes give up the game," said Weaver.

The Cats posted five players in double figures, led by Tracy Penn with 18 points. Vince Tillo dropped in 17 points, while Ed Heritage netted 12 points and John Thomsen and Calvin Sprew scored 10 points apiece.

Emporia State 35 41-76
 Wayne State 37 39-78

The two teams battled from the opening jump and WSC fell behind in the opening minute before taking control of the game, 6-4, with 17:50 left on a shot by Calvin Sprew. The Wildcats continued to shoot well from the floor and increased their lead to 24-18 with just under 11 minutes left on a basket by John Thomsen. WSC led at the half, 39-35.

On the boards, Penn also led with seven rebounds from the guard spot and Sprew tallied six boards. As a team, Emporia held a 43 to 41 lead in the rebounding department.

Player	FG	FT	PTS	R	ELS
WSC	2-5	12-5	22	3	3
Gooch	0-0	0-0	0	0	1
Daley	9-19	0-1	18	7	2
Penn	4-7	4-4	12	3	4
Heritage	4-6	2-2	10	5	2
Thomsen	7-13	3-5	17	4	4
Tillo	5-14	0-0	10	6	1
Sprew	1-2	0-0	2	0	2
Wisselmeyer	2-3	0-0	4	2	1
Radig	3-6	0-0	6	3	1
Totals	34-69	10-14	78	31	19
Emporia	33-60	10-17	76	34	17

At the start of the second half of play, WSC outscored Emporia State 16 to 9 to gain their 10 point margin, 53-43. At that point, Emporia sacked in eight straight points to clip Wayne's lead down to two points, 53-51, with 12:37 left.

"Emporia may have looked past us a little bit... plus the fact that the home court has been an advantage over the league all season long," Klaver added. "This is a bad place to play because it happens to be the furthest distance away, but we'll take advantage of that."

Emporia State 26 37-63
 Wayne State 36 30-66



MICHELLE BLOMBERG scores two of her 22 points. (photography: Jackie Olson)

NAIA Men's Top 20
 Week of Feb. 11

- College of Charleston 22-2
- Washburn University 22-3
- Northeast Oklahoma 21-2
- Wisconsin-Stevens Point 16-4
- Fort Hays State 22-3
- Wisconsin-Eau Claire 18-3
- Seignaw Valley (Mich.) 21-3
- West Virginia Wesleyan 18-3
- Biola (Calif.) 22-3
- St. Mary's (Texas) 17-5
- Chaminade (Hawaii) 22-7
- Cumberland (Ky.) 22-2
- Westmont (Calif.) 18-4
- Wiley (Texas) 28-2
- St. Thomas Aquinas 27-5
- Hawaii Pacific 24-6
- Georgia Southwestern 18-3
- Presbyterian (S.C.) 17-5
- Marycrest (Iowa) 23-4
- Georgetown (Ky.) 20-3

NAIA Women's Top 20
 Week of Feb. 11

- Southwestern Oklahoma 22-0
- Seignaw Valley (Mich.) 20-0
- Carson-Newman (Tenn.) 24-1
- Central Arkansas 18-2
- Union (Tenn.) 24-1
- Wayland Baptist 21-4
- Francis Marion 19-3
- Georgia Southwestern 19-2
- U. of Portland 18-7
- College of Charleston 19-4
- Berry (Ga.) 22-5
- Louisiana College 16-3
- Alabama-Huntsville 15-4
- Missouri Sowers 17-3
- Missouri-Kansas City 21-5
- Aquinas (Mich.) 21-2
- Oklahoma Christian 18-4
- Tarleton State (Texas) 21-5
- Dillard (La.) 16-5
- Gonzaga (Wash.) 20-3

Lady Wildcats upset top rated Emporia

While their Central States conference record might not indicate it, the Wayne State Lady Wildcats again donned the role of giant killer and upset top-rated Emporia State on Friday evening in Rice Auditorium, 66-63.

With the win, the Lady Cats improved to 2-9 in the CSIC conference and overall to 11-15 on the year. Their only other win in the conference came earlier in the year at home over the Lady Tigers of Fort Hays State, who had currently been the top CSIC team coming into the game.

"IT WAS A GOOD team effort by everyone on and off the bench," said Lady Wildcat Coach Lenny Klaver. "We look at it as a confidence booster, especially to our returning players... if let's them know we can be competitive in the CSIC."

Freshman Michelle Blomberg capped the WSC effort with 22 points in the game, followed by Barb Wragge with 17 points and Shari Krohn with 11 points.

The Lady Wildcats trailed 20-12 with 9:40 left in the first half before putting together a 24-6 scoring onslaught which left Emporia in a trail of dust and 10 points behind at the half, 36-26. WSC took the lead on a shot by sophomore Robin Wells from the left side, 25-24, with 2:54 in the half.

The fact was that we got intense in those closing 10 minutes of the half and made things happen," said Klaver. "We came up with some fast breaks on their turnovers and that really helped us out." Wayne scored on three fast breaks and had opportunities on several others but were stopped by Emporia fouls.

The Lady Hornets pulled their game together during the intermission and came out in the second half to cut Wayne State's lead and surge to a two point advantage themselves, 50-48 with 9:24 left.

Buckets by Shari Krohn and Blomberg tied the score at 52-52 and WSC recaptured the lead for what would prove to be for good

on a Robin Wells shot off an offensive rebound with just over five minutes to play.

WSC scored eight of their final 10 points from the free throw line as Emporia State found themselves in a fouling situation in an effort to regain the lead. A successful one and one shot by Wells pushed the Lady Wildcat lead to 66-61 with under a minute left before Emporia came up with their final bucket with three seconds left.

"Emporia made the switch to a man defense in the second half, and we had to call a time out and make some adjustments in order to work against it," said Klaver. "We had more turnovers than usual, but a lot of that was a result of the pace of the game." WSC carded 20 turnovers in the game, while Emporia gave up the ball 22 times.

"Emporia may have looked past us a little bit... plus the fact that the home court has been an advantage over the league all season long," Klaver added. "This is a bad place to play because it happens to be the furthest distance away, but we'll take advantage of that."

On the boards, Shari Krohn balanced her 11 points on offense with a strong rebounding game, pulling in 15 rebounds to lead the team.

WSC was slated to face Washburn in the second half of a weekend doubleheader in Rice Auditorium Saturday night at 5:30 p.m.

Player	FG	FT	PTS	R	ELS
WSC	9-12	0-0	22	4	0
Blomberg	1-3	0-0	2	2	0
Gribble	2-9	2-3	6	2	1
Wells	1-3	0-1	2	7	3
Tomaskiewicz	6-23	5-5	17	9	3
Wragge	5-11	1-3	11	15	3
Krohn	2-6	2-2	6	4	2
Nygren	25-67	16-22	66	44	12
Totals	26-44	11-15	63	42	21

Allen squeaks by Homer, one game from state

Allen's girls' basketball team earned their way one step closer to a state tournament berth Thursday night, via a 43-42 squeaker over Homer in the C-8 subdistrict playoffs at Emerson-Hubbard.

The Eagles will have to face Lewis division opponent Bancroft-Rosalie in a district playoff game to win the right to advance to the state tournament. A site and date for the contest had not been chosen at press time.

The two teams have met twice during the regular season, splitting a pair of close decisions. Allen lost to the Panthers 41-35 in the consolation round of the Ponca Invitational tournament, but came back three days later to down them in division play, 38-34.

Allen will take an 11-7 mark into the game, while Bancroft-Rosalie evened their record at 9-9 with a win over Walhill in the C-7 subdistrict finals Thursday night.

"We had some bad passes which led to turnovers and missed some free throws in the last period that made things close in the end," said Troth. The Lady Knights scored a layup with six seconds left on the clock to pull to within one point before Allen called a timeout and set up a play to run time out on the clock.

Junior Denise Magnuson tallied 13 points to lead Allen's scoring, and Shelly Boyle hit for 10 points. Magnuson also brought down eight rebounds, and Diane Magnuson and Mary Oswald logged five rebounds.

"In the third quarter, Homer switched from a man to zone and then back to a man defense, and we held the ball a lot, so that contributed to the low scoring on our part," said Troth.

LOOKING TOWARDS the Bancroft-Rosalie game, Troth said that the Panthers are a half team, which has given the Eagles problems in the past. "We will definitely have to play better defense and improve the execution of our offense."

	Homer	Allen
	12-7	17-42
	12-14	3-14-43

	FG	FT	F	TP
Homer	6	1-2	3	13
De. Magnuson	1	2-3	2	4
Di. Magnuson	4	1-2	2	9
Oswald	3	4-6	4	10
Boyle	3	1-3	3	3
Hackett	1	0-0	1	2
B. Hansen	1	0-2	0	2
Erwin	0	0-0	1	0
Blohm	0	0-0	1	0
Totals	17	9-18	14	43
Homer	17	8-10	18	42



ALLEN'S BARB Hansen attempts to block an Emerson shot.

Eagles close regular season with road loss to Wynot

The Allen Eagles ended their regular season basketball schedule on Friday night with a 58-50 road loss to Wynot.

The Eagles will enter the Class C-8 subdistrict tournament this evening with an 8-7 record and collide with the Winside Wildcats at Lyon-Decatur Northeast at 8:30 p.m.

"WE'LL NEED to get ready for that game with Winside," said Allen Coach Dave Uldrich. "We have to execute better offensively, and play a tougher game all the way around."

"District tournament time is where the season can start, and it's also where it can end...the kids just need to pick things up from here and go on."

hit 9 of 11 from the line and finished the night at 23 of 38 from the line.

Jay Jones notched 15 points for the Eagles, while Craig Noe added nine points and Kevin Malcom eight points.

On the boards, Malcom brought down eight rebounds, and Noe and Mitch Pett each logged seven rebounds.

"WE JUST DIDN'T seem to get back well on defense...we were in the wrong place at the wrong time when they would let go with a pass," said Uldrich. "Offensively we looked sluggish throughout the night."

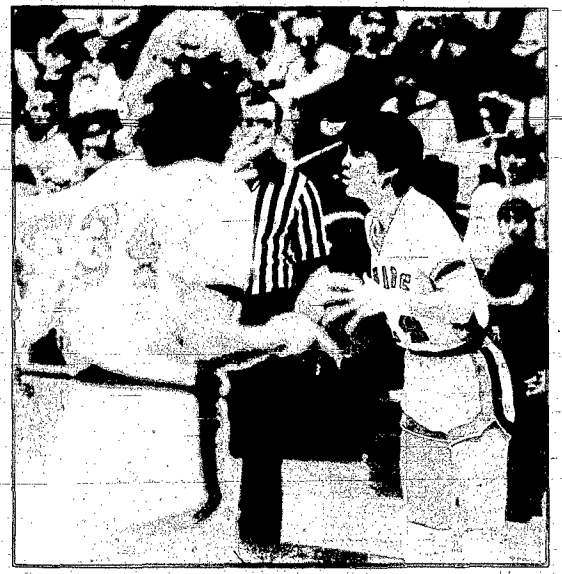
Allen won the junior varsity game handily by the score of 50-20. Clarke McGrath led scoring with 11 points.

	Allen	Wynot
	12-13	15-50
	13-10	16-17-58

	FG	FT	F	TP
Allen	0	1-2	4	1
Mahlner	6	3-4	3	15
J. Jones	4	1-2	4	9
Noe	1	1-4	3	3
Pett	3	1-2	4	7
S. Jones	0	0-2	0	0
Hansen	0	0-2	0	0
Oswald	3	1-2	1	7
Malcom	3	2-2	0	8
Totals	20	10-20	19	50
Wynot	18	22-38	18	58

The Eagles led early in the game against Wynot, leading at the half 25-23. They were able to maintain that two point lead through the third quarter and pad it to as many as five points before the Blue Devils made a run to narrow the gap to two points, 41-39 going into the fourth quarter.

They continued to come after the Eagles in the final period and tied the score midway through before the two teams began a back-and-forth battle on the scoreboard. Wynot took the lead for good with about two minutes left and pulled to their final margin by taking advantage of Allen fouls late in the game. In the fourth quarter, the Blue Devils



LAUREL'S WENDY Robson inbound the ball.

Pender fights back to upset Laurel girls

Life does go on in Laurel after the end of the Lady Bears basketball season.

Laurel's girls' basketball team saw their hopes of a possible district championship game and trip to the Nebraska state basketball tournament end Thursday night in a 53-50 loss to Pender at Wayne State College in the finals of the C-10 subdistrict playoffs.

shots from the floor, Pender burned the nets for 21 of 34 shots in the game for 62 percent, which included hitting 12 of 17 in the second half for 71 percent.

"Pender played a good game, they really shot well from the floor and that made the difference," said Hamilton.

Pender broke their scoring open in that quarter, outscoring the Lady Bears 19-9 to break away for the win. "Pender was able to work the ball to the inside during the fourth quarter, plus we had some girls in foul trouble, which hurt us," said Hamilton. "We just got outplayed in that quarter."

us," said Hamilton. "In the fourth quarter we just didn't retaliate to that surge like we had before."

The Lady Bears posted three players in double figures in the loss, including Wendy Robson with 19 points, Renee Vanderheiden with 12 points and Gail Twiford with 11 points.

"Life goes on now that the season is over," said Lady Bears Coach Gale Hamilton. "I'm not disappointed with the season we had at all, it was a fine one."

That fine season included a 16-3 overall record and a third straight Lewis and Clark conference tournament championship, along with a spot in the Class C1 Top 10 ratings for most of the season.

Laurel opened up the game and took an early 18-8 lead in the first quarter behind the shooting arms of senior Wendy Robson and Renee Vanderheiden. Robson hit for the Lady Bears' first eight points of the game and assisted on two more buckets, while Vanderheiden connected for the next six points of the period.

AT THE TWO minute mark, Pender opened up a 35-point lead which buckets by Vanderheiden and Sara Adkins clipped to one point, 51-50 with 35 seconds left. After taking a rebound, Vanderheiden got off a shot which bounced out and was picked up in the lane by sophomore Gail Twiford.

Twiford's shot also rimmed the basket and was brought in by a Pender player and ended with a foul by Laurel. A successful one and one shooting attempt with two seconds left sealed the win for Pender.

"Offensively, I never felt that we struggled in the game...we just gave up too many points on defense and you can't do that in a game and win."

	Pender	Laurel
	8-11	15-53
	18-10	13-9-50

	FG	FT	F	TP
Laurel	9	1-4	5	19
Robson	1	0-0	4	2
Joslin	4	3-4	3	11
Twiford	2	2-2	4	6
Adkins	6	0-0	1	12
Vanderheiden	22	6-10	17	50
Totals	21	11-18	12	53

SHOOTING FROM the field probably made the most difference in the outcome of the Pender game. While the Lady Bears tossed in a respectable 41 percent on 22 of 54

Scoring became more balanced in the second quarter, with Pender trimming a point off the Laurel lead heading into the locker room, 18-19.

"We would build up an eight or ten point lead and then Pender would surge back at

Second half dooms Laurel boys

A close first half of basketball action turned into a 19-point loss for Laurel on Friday night as Randolph broke out for 34 points in the second half to post a 64-45 win over the Bears in their final game of the regular season.

changes...we want to get five kids out there on the floor who will play hard."

Laurel effort, joined in double figures by Mike Forsberg with 13 points. Rath also led on the boards with eight rebounds and Brent Haisch added seven boards.

IN THE JUNIOR varsity game with Randolph, Laurel fell in a 50-37 loss. Jody Cunningham led the scoring with 10 points. The Bears freshmen picked up a win on the evening with a 27-26 decision over Randolph. Kyle Nixon was the leading scorer with eight points.

"The first half of the game was really even, and we could have been fled going into halftime," said Laurel Coach John Heid. "In the second half we just got outstuffed...we didn't work hard enough for our shots."

	Laurel	Randolph
	15-8	18-45
	14-16	18-64

Heid also noted that Randolph changed their players throughout the night and was able to wear the Bears down. "We are not a deep team, and that lack of depth combined with their substituting took 11's toll on us, if we were us down."

	Laurel	FG	FT	F	TP
Halsch	1	4-4	5	5	
Granquist	1	1-4	4	3	
Rath	6	9-12	42	21	
Forsberg	5	3-3	5	13	
Jones	0	0-2	0	0	
Daberkow	0	0-0	1	0	
Margard	0	1-2	2	1	
Anderson	0	1-2	0	1	
Totals	13	19-29	23	65	
Randolph	24	16-23	23	64	

"Going into the Pender game we will probably make some minor personnel

Winside boys suffer road loss

The Winside Wildcats closed out the regular portion of their season Friday night with a 55-53 loss to a tough Newcastle squad on the road.

The Raiders continued their clip into the second half of the game and outdistanced the Wildcats 30-18 in the third and fourth quarters.

In the junior varsity game, Newcastle won a 22-20 contest. Kevin Jaeger also led scoring in the reserve game with seven points.

The Wildcats will tangle with the Allen Eagles in the opening round of the C-8 subdistrict tournament on Tuesday night in Lyons. Winside is 0-6 heading into the game.

Kevin Jaeger scored nine points to lead the effort for Winside, and Kevin Falk netted six points. Rebounding was led by Falk with six boards and Mike Thies with four rebounds.

"We really played a good game in the first half," said Winside Coach Mark Freburg. "The kids put out a tough effort in the second half, but it's hard to come back against a team as strong as Newcastle."

WINSIDE GOT behind early in the game and trailed 10-4 at the end of the first period before coming back to tie the score at 10-10 midway through the second quarter. They tied things up again at 12-12 before Newcastle dropped in some quick baskets to boost to a 29-15 halftime lead.

"Mike and Kevin really had to battle for their rebounds underneath the boards...Newcastle is a very physical team."

	Winside	Newcastle
	4-11	5-13-33
	10-19	17-13-59

	FG	FT	F	TP
Winside	1	1-2	2	3
Da. Mundl	2	0-0	2	4
Yoss	2	0-0	0	4
Roberts	0	0-0	2	0
M. Thies	1	3-4	2	5
Jaeger	4	1-2	3	9
K. Falk	3	0-0	1	6
Carstens	1	0-0	1	2
Totals	14	5-8	12	33
Newcastle	27	5-8	11	59

sports slate

Monday, Feb. 18
HIGH SCHOOL BASKETBALL
 Girls B-4 district tournament
 Wayne at Harlington CC, 7:30 p.m.
 Subdistrict basketball begins
 Boys C1-10 subdistrict at WSC
 Ponca vs. Emerson-Hubbard, 6:30 p.m.
 Laurel vs. Pender, 8 p.m.

Tuesday, Feb. 19
HIGH SCHOOL BASKETBALL
 Girls B-4 district tournament second round action at NTC
 Boys C2-8 subdistrict at Lyons Northeast
 Winside vs. Allen, 6:30 p.m.
 Homer vs. Wakefield, 8 p.m.
COLLEGE BASKETBALL
 WSC Lady Cats at Peru State
 WSC Wildcats at Chadron State

Thursday, Feb. 20
HIGH SCHOOL BASKETBALL
 Boys C1-10 subdistrict finals at WSC
 Boys C2-8 subdistrict finals at Lyons
 Girls B-4 district finals at NTCC

Friday, Feb. 22
HIGH SCHOOL BASKETBALL
 Boys B-4 District first round
 Wayne hosts Columbus Scotus, 7:30 p.m.
COLLEGE BASKETBALL
 WSC Lady Cats host Pittsburg State
 WSC Wildcats host Pittsburg State

Saturday, Feb. 23
HIGH SCHOOL BASKETBALL
 Boys B-4 District second round
 at Northeast Technical Community College in Norfolk

Sunday, Feb. 24
 Knights of Columbus regional free throw competition at Norfolk Catholic High School in Norfolk, beginning at 1:30 p.m.

Monday, Feb. 25
HIGH SCHOOL BASKETBALL
 Boys B-4 District finals
 at Northeast Technical Community College in Norfolk

Chapman announces football signings

Wayne State College head football Coach Pete Chapman announced the signing of six high school players to letters of intent with the Wildcat football program.

Heading the list are three quarterback candidates, including O'Neill St. Mary's all-state quarterback Bill Minarik, (6-1, 170 lbs.); Eros Sanchez of Brookline, N.Y., (6-1, 185 lbs.); and Scott Raue of Perry, S.D., (6-2, 190 lbs.).

Also signed were defensive back Mark Volk of Aurora, (6-0, 174 lbs.); offensive lineman Jeff Wagner of Omaha North, (6-1, 235 lbs.); and wide receiver John Jennings of Omaha South, (6-3, 195 lbs.).

Wayne girls end regular season with home loss to Schuyler

In their final outing of the 1984-85 regular season, Wayne's Lady Blue Devils were handed a 49-31 defeat by Schuyler on their home floor Thursday night.

the ball on the night, with Schuyler committing 22 turnovers and the Lady Blue Devils 18 turnovers. On the boards, the Warriors held a 49 to 39 advantage.

The loss left the Lady Blue Devils with a 16-1 record heading into their opening round game of the Class B-4 district tournament on Monday night at Harlington Cedar Catholic.

"We switched and played a diamond and one defense the first half of the game," said Hochstein. "But we had to change back to our 2-1-2 in the third and fourth quarters when their guards began dropping in the ball."

"**WE PROBABLY PLAYED** our best game of the season as far as executing the offense," said Wayne Coach Dale Hochstein. The Lady Blue Devils trailed by two points at the end of the first quarter, 9-7, and by seven at the half, 22-15.

IN THE RESERVE game, Wayne fell in a 43-17 contest. Andrea Marsh was the top scorer—with 10 points. The halftime score was 26-9 in favor of Schuyler.

In the second half of the game, Schuyler tacked on an additional three points to their lead, and coasted in the final period toward the win.

	Schuyler	Wayne
	9-13	14-49
	7-8	11-5-31

Wayne's scoring was led by senior Lisa Jacobson and sophomore Kecia Corbit with eight points each and Jodi Dittman added six points.

	FG	FT	F	TP
Wayne	0	1-2	0	1
Lo. Jacobson	4	0-0	2	8
Lt. Jacobson	3	0-0	3	6
Dittman	0	0-0	0	0
Jordan	2	0-0	5	4
Skewis	0	0-0	2	0
Corbit	3	2-2	4	8
Pick	0	4-7	2	4
Totals	12	7-13	18	31
Schuyler	19	11-28	11	49

Cold shooting again hindered the Wayne team, as they managed to hit just 12 of 68 shots for 18 percent in the game. Schuyler managed little better, netting 19 of 72 for 26 percent.

Both teams had some trouble controlling

The Wayne Herald, Monday, February 16, 1985

Wayne wins thriller at Pierce

A last second shot by Wayne's Don Larsen after an offensive rebound at the conclusion of overtime gave the Blue Devils a win in the last regular season game.

Larsen brought down an offensive rebound from a missed baseline shot by Rod Dahl and got the ball away and into the hoop as the buzzer sounded the end of the first overtime, giving Wayne an exciting 54-52 win.

Blue Devil Head Coach Bob Uhing was not satisfied with the last game performance of his team, although he said his team played well the last few minutes of the fourth quarter and into the overtime period.

"It was a matter of looking by Pierce and you can't do that against a good ball club," said Uhing.

"Mentally, we were not ready to play as we normally are - not being aggressive offensively and defensively," he said.

"Defensively, we were not good at locating the Pierce shooters and we also gave up a some offensive rebounds."

"During the last two minutes of the game, the team did a good job of execution," he added.

After a Blue Devil time-out with 45 seconds remaining in the overtime period and the score tied at 52-52, Wayne executed a play which sprang Dahl open for a 17 footer, but the ball bounced out.

"The kids did a good job setting up the play and making sure it was a good shot. Rod took the shot with five seconds left and

that gave us enough time to get the offensive rebound. It didn't give them [Pierce] time to grab the rebound and go downcourt to score a basket," Uhing said.

Larsen scored a field goal in the final seconds of the fourth quarter to give Wayne a one point lead at 50-49. As Pierce's Adam Frasch came down the floor and attempted a field goal, he was fouled by Dahl.

Uhing called time out before Frasch, who finished the game with 16 points, went to the free throw line. "He [Frasch] was hot from the field and we just wanted to get him off the line."

Frasch made his first attempt to tie the score at 50-50 but missed his second shot to send the game into overtime.

Action in the early going of the game was close, as Wayne led 15-14 at the end of the first quarter and the score was knotted at 29-29 at halftime.

The Blue Devils recaptured the lead at third quarter's end, outscoring Pierce 14-11. However, Pierce scored 10 points to Wayne's seven points in the final quarter.

During the last few games, offensive rebounds have hurt the Blue Devils. During the final minutes of Friday night's game, Wayne did a good job of pinning out for defensive and offensive rebounds.

Wayne hit on approximately 43 percent of their field goal attempts and hit on 18 of 34 free throws.

The Blue Devils pulled down 35 rebounds, 11 more than Pierce, and were led in that

category by Larsen with 12 and Dahl with 11. Dahl finished the game with 19 points to lead all Wayne scorers.

Todd Kramer led all Pierce scorers with 20 points.

The Blue Devils begin high school tournament action at Wayne Friday evening when they host Columbus Scotus.

"They are a good basketball team and we better be ready to play. They were ranked at one time in the Class B poll," said Uhing.

"The team is really balanced and they can play eight or nine kids. They play hard and aggressive," he said.

In the reserve game prior to the varsity match-up, the Wayne Blue Devils scored a victory, with Scott Baker tossing in 27 points.

	14	15	11	10	2	52
Pierce	15	14	14	7	2	52
Wayne	FG	ET	F	TP		
Wayne	0	0	0	0		
Warne	1	0	1	3	2	
Gross	1	0	1	3	2	
Pick	1	7	1	5	9	
Dahl	7	5	8	3	19	
Larsen	6	4	7	6	16	
Luaders	1	0	0	2	2	
Urulter	1	1	5	4	3	
Hausmann	1	1	2	0	3	
Totals	18	18	34	21	54	
Pierce	18	16	23	18	52	

wayne bowling

Junior highlights

Chad Davis, 175; Troy Wood, 178; Jarrod Wood, 170; Mike Kaup, 157; Robbie Allen, 198; 152, 144, 491; Mark Creighton, 159; Carla Nelson, 160, 158, 450; Brian Sherman, 159; Darrin Barner, 144, 181, 150, 475; Kevin Maly, 186, 200, 159, 249; Kelly Marny, 154; Brent Pick, 154, 191, 155, 500; Scott Baker, 190, 191, 202, 593; Scott Milliken, 165.

Men's highlights

Frank Woods, 202; Rod Hullman, 201; E.Rnie Swift, 210; Ted VonSeggern, 203; Val Kienast, 209, 227, 626; Tom Ellingson, 200; Rich Wurdinger, 207; John Rebensdorf, 221; Herb Hansen, 225, 577; Erwin Baker, 203; Dale Phipps, 208, 599; Dennis Beckman, 202.

John Schaefer, 201; Dick Carlson, 204; Bryan Denklow, 211;

Kim Baker, 219; Butch Sperry, 210; Rod Deck, 222; Wilmer Deck, 200; Duaine Jacobsen, 211; Stan Soden, 217; Lee Weender, 202; Kip Bressler, 217; Barry Dahlkoetter, 204, 210, 510.

Ken Spillitgerber, 234, 619; Barry Dahlkoetter, 237, 597; Gary Waggoner, 205; Pat Dougherty, 200; Mike Nissen, 206; Jim Maly, 200; John Rebensdorf, 222; Dan Jaikson, 219; Radelle Erleben, 234; Barry Dahlkoetter, 217, 208, 610; Chris Luaders, 204; Verlyn Stollenberg, 206.

Women's highlights

Joni Jaeger, 215, 503; Diane Miller, 191, 493; Fran Nichols, 200, 492; Donna Frevert, 197, 503; Laurie Roberts, 183, 500; Lillian Wittler, 181; Rita McLean, 203, 187, 557; Leona Janke, 180; Fern Tesl, 194; Mildred Danberg, 189; Esther Hanson, 199, 536;

Jean Jones, 225, 564; Sharon Juck, 494; Donna Nelson, 192.

Joan Schaefer, 183; Kyle Rose, 183; Alta Meyer, 180; 482; Joni Holdorf, 197, 183, 552; Judy Sorenson, 199, 488; Sandra Gathje, 205, 510; Margie Kahler, 196, 184, 546; Jeanie Sturm, 197, 530; Bev Holdorf, 210, 542; Jackie Nicholson, 183; Jo Ostrander, 193, 509; Lois Netherland, 216, 534; Elaine Pinkelman, 180, 482; Geri Marks, 200, 495; Dawn Peters, 486; Teri Bowers, 216; Mildred Danberg, 183, 517; Jennie Robber, 180; Sue Wood, 185, 502; Addie Jorgensen, 190, 507; Jackie Nicholson, 182, 188, 535; Cindi Jorgensen, 190, 523; Elaine Pinkelman, 209, 519; Tootie Lowe, 510; DiAnn Shullihies, 186, 501; Linda Janke, 193, 194, 530; Gwen Jorgensen, 188.

Cheryl Henschke, 226, 550; Adeline Kienast, 185, 224, 550; Jo McElvogue, 212, 437; Dorothy Hughes, 199; Carol Lackas, 194, 194, 55; Jean Jones, 191, 456; Diane Wurdinger, 184, 169, 190, 504; Pat Morris, 180, 169, 532; Alice Rohde, 168, 508; Addie Jorgensen, 187, 497.

Margie Kahler, 187, 490; Geri Marks, 184; Judy Sorenson, 184, 527; Linda Janke, 183, 520; Essie Kathol, 189, 489; Ine Rosber, 512; Wanda Holdorf, 490; Judy Milligan, 499; Jessie Hamer, 181; Holly Stollenberg, 208, 505; Mary Lou Erleben, 196, 486.

Split conversions
Donna Nelson, 5-10 split.
Dorothy Hughes, 7-4-6 split.
Jackie Nicholson, 6-7 split.
Geri Marks, 6-7-10 split.
Alta Meyer, 5-8-10 split.

Pairings listed for boys basketball districts

West Point (17-1)

Feb. 22 7:30 p.m.

Schuyler (7-10)

Feb. 22 7:30 p.m.

North Bend (11-6)

Feb. 22 7:30 p.m.

Pierce (10-7)

Feb. 22 7:30 p.m.

Wayne (14-2)

Feb. 22 7:30 p.m.

Columbus Scotus (7-9)

Feb. 22 7:30 p.m.

Columbus-Lakeview (14-4)

Feb. 22 7:30 p.m.

Harrington CC (9-7)

Feb. 22 7:30 p.m.

First round games played at top-seeded school; all other games played at Northeast Technical Community College gym.

Class B-4 Boys District

Feb. 23 6:30 p.m.

Feb. 25 7:30 p.m.

Winner

Allen

Feb. 19 6:30 p.m.

Winside

Feb. 21 7:30 p.m.

Wakefield

Feb. 19 8 p.m.

Homer

Feb. 19 8 p.m.

C2-8 at Lyons Decatur Northeast

Class C2-8 Boys District

Feb. 21 7:30 p.m.

Winner

Ponca

Feb. 18 6:30 p.m.

Emerson-Hubbard

Feb. 21 7:30 p.m.

Laurel

Feb. 18 8 p.m.

Pender

C1-10 at Wayne State College

Class C1-10 Boys District

Feb. 21 7:30 p.m.

Winner

BOWLING

AT MELODEE LANES



Pizza Hut
For Great Pizza After Bowling
Or Anytime
For Home Delivery
375-2540

LES' STEAK HOUSE & LOUNGE

4 p.m. to 1 a.m.
Watch your favorite game in our lounge.
Steak House
9:30-10 p.m.
Sunday Buffet - 11 to 1:30

STATE NATIONAL BANK & TRUST CO.


122 Main
Phone 375-1130

SIEVERS HATCHERY

WYLINE CHICKS & COCK FEED
Phone 375-1020
"Good Eggs to Know"

For all your food needs contact us.
We sell results
BILL BARTELS
Laurel, Nebr.
256-3698

Walnut Grove
SPECIAL Hamburger, French Fries, Slaw
Good Anytime
\$2.95
THE EL TORO
Lounge & Package



Schmidt
East Hwy. 35

Grace Mixed Doubles

WON	LOST
Hotelid Henschke	20 12
Erlebe-Drown	19 13
John Malier	19 13
Stollenberg	18 19
Austin Ekberg	17 15
Willig-Sherbahn	16 16
Eckhoff-Magnuson	15 17
Blaikin Hammer	15 17
Spahr-Brockmoller	13 19
Echtlenkamp-Stollenberg	10 20
High scores: Radelle Erleben, 234; Holly Stollenberg, 208; Hotelid Henschke, 87; 195.	

Wednesday Nite Owls

WON	LOST
Fletcher's Farm Service	20 8
DeKals Pflzer Genetics	20 8
DeKals Motors	18 10
C & D Men	16 12
Logan Valley Implement	16 12
Woods Lanes	14 14
Commercial State Bank	13 15
4th Jdg	13 15
Jacobs Seeds	13 15
Ray's Locker	12 16
Electrol Sales & Service	11 17
Tri-County Coop	2 26
High scores: Rod Deck, 222; Barry Dahlkoetter, 500; Ray's Locker, 730; C & D Men, 259.	

Hits 'n Misses

WON	LOST
Cunningham Well	21 9
M & S Oil	19 9
Melodee Lanes	18 10
Wilson Sons	14 14
Ron's Bar & Steakhouse	17 11
C & D G Bags	16 12
Jacobs Best	14 14
The Diamond Center	9 13
Stevens Hatchery	9 13
The Lumber Company	8 20
The Lumber Company	8 20
High scores: Cheryl Henschke, 226; Klauhe Wurdinger, 544; Ron's Bar & Steakhouse, 685, 209.	

City League

WON	LOST
Cathart Lumber	16 4
Woods Pilg. & Hfg.	13 7
Black Hawk	12 8
Tri-Travel	12 8
Fredrickson Oil	11 9
VIEW	10 10
Wayne Greenhouse	10 10
Clarkson Service	10 10
Patrick Blue Ribbon	7 13
Red Carr Implement	7 13
Mary Sam's Service	7 13
Ellingson Motors	5 15
High scores: Val Kienast, 227; Dale Phipps, 599; Red Carr Implement, 1000, 2723.	

Saturday Nite Couples

WON	LOST
Janke Jacobsen-Kay	27 13
Soden Krueger	26 14
Baker Jorgensen Shullihies	21 17
Gahrer Komp	21 19
Jorgensen-Olendorf-Terrine	21 19
Jorgensen-Rebinder-Hintz	18 22
Pinkelman-Lowe-Ellis	16 24
Jungner-Wacker-Jorgensen	12 28
High scores: Elaine Pinkelman, 209; Perry Johnson, 199; Jackie Nicholson, 535; Steve Jorgensen, 540; Pinkelman-Lowe, Ellis, 698, 1979.	

Senior Citizens

On Thursday, Feb. 14, 17 senior citizens participated in bowling. The Floyd Sullivan team defeated the Art Brummond team 4947 to 4614. High series and games were bowled by Don Wacker, 576, 218, 200; Swede Halley, 508, 379; Vern Harder, 587, 188; Perry Johnson, 502, 189; Warren Austin, 482, 176; Floyd Sullivan, 471, 190; Leo Hansen, 470, 167; and Art Brummond, 458, 162.

WAYNE DISTRIBUTING

IMPORTED
Heineken
HOLLAND BEER.
Phone 375-3083

Going Out to Eat?
RON'S BAR & Garage
is The Place
Serving the finest in steaks and sea food
CARROLL, 627

Authorized Dealer For
Radio Shack
The Biggest Name in Little Computers
T & C Electronics

THE WAYNE HERALD

For All Your Printing Needs

Make Us Your Headquarters For Prescriptions & Photo Supplies
GRIESS REXALL



Rabbit Blue Ribbon

6 - sports

The Wayne Herald, Monday, February 18, 1985

Allen squeaks by Homer, one game from state

Allen's girls basketball team earned their way one step closer to a state tournament berth Thursday night, via a 43-42 squeaker over Homer in the C-8 subdistrict playoffs at Emerson-Hubbard.

The Eagles will have to face Lewis division opponent Bancroft-Rosalie in a district playoff game to win the right to advance to the state tournament. A site and date for the contest had not been chosen at press time.

The two teams have met twice during the regular season, splitting a pair of close decisions. Allen lost to the Panthers 41-35 in the consolation round of the Ponca Invitational tournament, but came back three days later to down them in division play, 38-34.

Allen will take an 11-7 mark into the game, while Bancroft-Rosalie evened their record at 9-9 with a win over Walthill in the C-7 subdistrict finals Thursday night.

"We had some bad passes which led to turnovers and missed some free throws in the last period that made things close in the end," said Troth. The Lady Knights scored a layup with six seconds left on the clock to pull to within one point before Allen called a timeout and set up a play to run time out on the clock.

Junior Denise Magnuson tallied 13 points to lead Allen's scoring, and Shelly Boyle hit 10 for 10 points. Magnuson also brought down eight rebounds, and Diane Magnuson and Mary Oswald logged five rebounds.

"In the third quarter, Homer switched from a man to zone and then back to a man defense, and we held the ball a lot, so that contributed to the low scoring on our part," said Troth.

LOOKING TOWARDS the Bancroft-Rosalie game, Troth said that the Panthers are a tall team, which has given the Eagles problems in the past. "We will definitely have to play better defense and improve the execution of our offense."

Homer	12	7	6	17	42
Allen	12	14	3	14	43

Allen	FG	FT	F	TP
De. Magnuson	6	1-2	3	13
Di. Magnuson	1	2-3	2	4
Oswald	4	1-2	2	9
Boyle	3	4-6	4	10
Heckathorn	1	1-3	1	3
B. Hansen	1	0-0	1	2
Erwin	1	0-2	0	2
Blohm	0	0-0	1	0
Totals	17	9-18	14	43
Homer	17	8-10	18	42

AGAINST HOMER, in the subdistrict playoffs, Allen pulled out to an early 8-2 lead before Homer began to find the bucket and tied the game at 12-12 on a last second shot at the end of the first quarter. The Eagles stretched their lead to as many as 10 points in the second period before a last second scoring spree by the Lady Knights cut the margin to 26-24 in intermission.

Homer kept the momentum going into the third quarter, a period which saw both teams turn stingy on defense and a total of nine points scored between the two. "Homer switched to a zone defense in the third quarter and we seemed to have trouble shooting from the outside," said Allen Coach Gary Troth.

After taking a four point 29-25 lead into the fourth quarter, Allen fell prey to turnovers in the closing minutes which allowed Homer to narrow the gap and close in on the lead.



ALLEN'S BARB Hansen attempts to block an Emerson shot.

Eagles close regular season with road loss to Wynot

The Allen Eagles ended their regular season basketball schedule on Friday night with a 59-50 road loss to Wynot.

The Eagles will enter the Class C-8 subdistrict tournament this evening with an 8-7 record and collide with the Winside Wildcats at Lyon-Decatur Northeast at 6:30 p.m.

"WE'LL NEED TO get ready for that game with Winside," said Allen Coach Dave Uldrich. "We have to execute better offensively and play a tougher game all the way around."

"District tournament time is where the season can start, and it's also where it can end...our kids just need to pick things up from here and go on."

The Eagles led early in the game against Wynot, leading at the half 25-23. They were able to maintain that two point lead through the third quarter and pad it to as many as five points before the Blue Devils made a run to narrow the gap to two points 41-39 going into the fourth quarter.

They continued to come after the Eagles in the final period and tied the score midway through before the two teams began a back-and-forth battle on the scoreboard. Wynot took the lead for good with about two minutes left and pulled to their final margin by taking advantage of Allen fouls late in the game. In the fourth quarter, the Blue Devils hit 9 of 11 from the line and finished the night at 59-50 from the time.

Jay Jones netched 15 points for the Eagles, while Craig Noe added nine points and Kevin Malcom eight points.

On the boards, Malcom brought down eight rebounds, and Noe and Mitch Peiff each logged seven rebounds.

"WE JUST DIDN'T seem to get back well on defense...we were in the wrong place at the wrong time when they would let go with a pass," said Uldrich. "Offensively we looked sluggish throughout the night."

Allen won the junior varsity game handily by the score of 50-20. Clarke McGrath led scoring with 11 points.

Allen	12	13	15	10	50
Wynot	13	10	16	17	50

Allen	FG	FT	F	TP
Mafler	0	1-2	4	1
J. Jones	6	3-4	3	15
Noe	4	1-2	4	9
Peliff	1	1-4	3	3
S. Jones	3	1-2	4	7
Hansen	0	0-2	0	0
Oswald	3	1-2	7	7
Malcom	3	2-2	0	8
Totals	20	10-20	19	50
Wynot	18	22-30	18	50

Pender fights back to upset Laurel girls

Life does go on in Laurel after the end of the Lady Bears basketball season.

Laurel's girls basketball team saw their hopes of a possible district championship game and trip to the Nebraska state basketball tournament end Thursday night in a 53-50 loss to Pender at Wayne State College in the finals of the C-10 subdistrict playoffs.

"Life goes on now that the season is over," said Lady Bears Coach Gale Hamilton. "I'm not disappointed with the season we had at all, it was a fine one."

That fine season included a 16-3 overall record and a third straight Lewis and Clark conference tournament championship, along with a spot in the Class C1 Top 10 ratings for most of the season.

SHOOTING FROM THE field probably made the most difference in the outcome of the Pender game. While the Lady Bears tossed in a respectable 41 percent on 22 of 54

shots from the floor, Pender burned the nets for 21 of 34 shots in the game for 62 percent, which included hitting 12 of 17 in the second half for 71 percent.

"Pender played a good game, they really shot well from the floor and that made the difference," said Hamilton.

Laurel opened up the game and took an early 18-8 lead in the first quarter behind the ho. Shooting arms of senior Wendy Robson and Renee Vanderheiden. Robson hit for the Lady Bears first eight points of the game and assisted on two more buckets, while Vanderheiden connected for the next six points of the period.

Scoring became more balanced in the second quarter, with Pender trimming a point off the Laurel lead heading into the locker room, 18-19.

The Pender girls continued to chip away at Laurel in the third period and trailed 41-34 going into the final eight minutes.

Pender broke their scoring open in that quarter, outscoring the Lady Bears 19-9 to break away for the win. "Pender was able to work the ball to the inside during the fourth quarter, plus we had some girls in foul trouble which hurt us," said Hamilton. "We just got outplayed in that quarter."

AT THE TWO minute mark, Pender opened up a five point lead which buckets by Vanderheiden and Sara Adkins clipped to one point, 31-30 with 35 seconds left. After taking a rebound, Vanderheiden got off a shot which bounced out and was picked up in the lane by sophomore Gail Twiford. Twiford's shot also rimmed the basket and was brought in by a Pender player and ended with a foul by Laurel. A successful one and one shooting attempt with two seconds left sealed the win for Pender.

"We would build up an eight or ten point lead and then Pender would surge back at

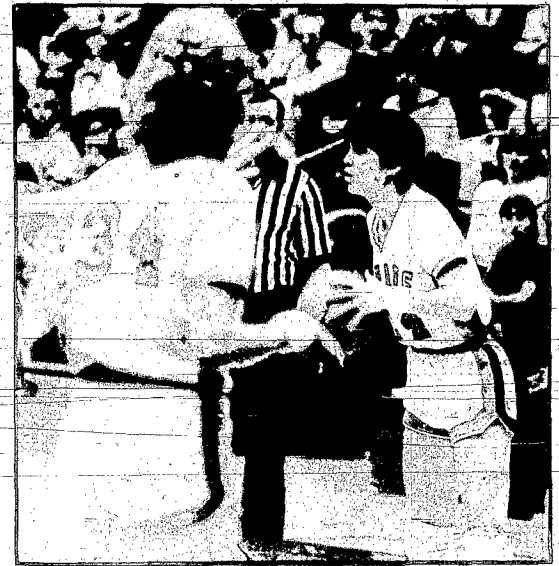
us," said Hamilton. "In the fourth quarter we just didn't retaliate to that surge like we had before."

The Lady Bears posted three players in double figures in the loss, including Wendy Robson with 19 points, Renee Vanderheiden with 12 points and Gail Twiford with 11 points.

"Offensively, I never felt that we struggled in the game...we just gave up too many points on defense and you can't do that in a game and win."

Pender	8	11	15	19	53
Laurel	18	10	13	9	50

Laurel	FG	FT	F	TP
Robson	9	1-4	5	19
Joslin	1	0-0	4	2
Twiford	4	3-4	3	11
Adkins	2	2-2	4	6
Vanderheiden	6	0-0	1	12
Totals	22	6-10	17	50
Pender	21	11-18	12	53



LAUREL'S WENDY Robson inbounds the ball.

sports slate

Monday, Feb. 18
HIGH SCHOOL BASKETBALL
 Girls B-4 district tournament
 Wayne at Harrington CC, 7:30 p.m.
 Subdistrict basketball begins
 Boys C1-10 subdistrict at WSC
 Ponca vs. Emerson-Hubbard, 6:30 p.m.
 Laurel vs. Pender, 8 p.m.

Tuesday, Feb. 19
HIGH SCHOOL BASKETBALL
 Girls B-4 district tournament second round action at NTCC
 Boys C-8 subdistrict at Lyons Northeast
 Winside vs. Allen, 6:30 a.m.
 Homer vs. Wakefield, 8 p.m.
COLLEGE BASKETBALL
 WSC Lady Cats at Peru State
 WSC Wildcats at Chadron State

Thursday, Feb. 20
HIGH SCHOOL BASKETBALL
 Boys C1-10 subdistrict finals at WSC
 Boys C-8 subdistrict finals at Lyons
 Girls B-4 district finals at NTCC

Friday, Feb. 22
HIGH SCHOOL BASKETBALL
 Boys B-4 District first round
 Wayne hosts Columbus Scotts, 7:30 p.m.
COLLEGE BASKETBALL
 WSC Lady Cats host Pittsburg State
 WSC Wildcats host Pittsburg State

Saturday, Feb. 23
HIGH SCHOOL BASKETBALL
 Boys B-4 District second round
 at Northeast Technical Community
 College in Norfolk

Sunday, Feb. 24
 Knights of Columbus regional free throw competition at Norfolk Catholic High School in Norfolk, beginning at 1:30 p.m.

Monday, Feb. 25
HIGH SCHOOL BASKETBALL
 Boys B-4 District finals
 at Northeast Technical Community College in Norfolk

Chapman announces football signings

Wayne State College head football coach Pete Chapman announced the signing of six high school players to letters of intent with the Wildcats football program.

Headline the list are three quarterback candidates, including O'Neill St. Mary's all-state quarterback Bill Minarik (6'1, 170 lbs.); Eros Sanchez of Brooklyn, N.Y., (6-1, 185 lbs.); and Scott Ruae of Pierre, S.D., (6-2, 190 lbs.).

Also signed were defensive back Mark Volk of Aurora, (6-0, 174 lbs.); offensive lineman Jeff Wagner of Omaha North, (6-1, 235 lbs.); and wide receiver John Jennings of Omaha South, (6-3, 195 lbs.).

Wayne girls end regular season with home loss to Schuyler

In their final outing of the 1984-85 regular season, Wayne's Lady Blue Devils were handed a 49-31 defeat by Schuyler on their home floor Thursday night.

The loss left the Lady Blue Devils with a 16-1 record heading into their opening round game of the Class B-4 district tournament on Monday night at Harrington Cedar Catholic.

"WE PROBABLY PLAYED our best game of the season as far as executing the offense," said Wayne Coach Dale Hochstein. The Lady Blue Devils trailed by two points at the end of the first quarter, 9-7, and by seven at the half, 22-15.

In the second half of the game, Schuyler tacked on an additional three points to their lead, and coasted in the final period toward the win.

Wayne's scoring was led by senior Lisa Jacobsen and sophomore Kecia Corbit with eight points each and Jodi Ditman added six points.

Cold shooting again hindered the Wayne team, as they managed to hit just 12 of 68 shots for 18 percent in the game. Schuyler managed 18 percent, netting 19 of 72 for 26 percent.

Both teams had some trouble controlling

the ball on the night, with Schuyler committing 22 turnovers and the Lady Blue Devils 18 turnovers. On the boards, the Warriors held a 49 to 39 advantage.

"We switched and played a diamond and one defense the first half of the game," said Hochstein. "But we had to change back to our 2-1-2 in the third and fourth quarters when their guards began dropping in the ball."

IN THE RESERVE game, Wayne fell in a 43-17 contest. Andrea Marsh was the top scorer with 10 points. The halftime score was 26-9 in favor of Schuyler.

Schuyler	9	13	14	13	49
Wayne	7	8	11	5	31

Wayne	FG	FT	F	TP
Lo. Jacobsen	0	1-2	0	1
Li. Jacobsen	4	0-0	2	8
Ditman	3	0-0	3	6
Jordan	0	0-0	0	0
Keating	2	0-0	5	4
Skokan	0	0-0	2	0
Corbit	3	2-2	4	8
Pick	0	4-7	2	4
Totals	12	7-13	10	31
Schuyler	19	11-28	11	49

Second half dooms Laurel boys

A close first half of basketball action turned into a 13 point loss for Laurel on Friday night as Randolph broke out for 34 points in the second half to post a 64-45 win over the Bears in their final game of the regular season.

Laurel, 4-11, is scheduled to matchup with Pender in the opening round of the boys C1-10 subdistrict tournament this evening (Monday) at Rice Auditorium on the Wayne State College campus, beginning at 8 p.m.

THE BEARS MATCHED talents evenly with Randolph in the first period and held a 12-14 lead going into the second quarter. In that period, the Cardinals racked up 16 points behind their offensive unit to erase Laurel's lead and go ahead at the half 30-23.

Laurel continued their pace into the third quarter, adding 10 points to their lead to aid them in the win.

Scott Rath dumped in 21 points to lead the

Laurel effort, joined in double figures by Mike Forsberg with 13 points. Rath also led on the boards with eight rebounds and Brent Halsch added seven boards.

The Bears hit 13 of 44 from the floor for 30 percent, while Randolph netted 24 of 31 for 47 percent. From the line, Laurel was 19 of 29 for 66 percent and the Cards sank 16-23 for 70 percent.

"The first half of the game was really even, and we could have been tied going into halftime," said Laurel Coach John Held. "In the second half we just got outlashed...we didn't work hard enough for our shots."

Held also noted that Randolph changed their players throughout the night and was able to wear the Bears down. "We are not a deep team, and that lack of depth combined with their substituting took it's toll on us. It wore us down."

"Going into the Pender game we will probably make some minor personnel

changes...we want to get five kids out there on the floor who will play hard."

IN THE JUNIOR varsity game with Randolph, Laurel fell in a 50-37 loss. Jody Cunningham led the scoring with 10 points. The Bears freshmen picked up a win on the evening with a 27-26 decision over Randolph. Kyle Nixon was the leading scorer with eight points.

Laurel	15	8	8	14	45
Randolph	14	16	10	16	49

Laurel	FG	FT	F	TP
Halsch	1	4-4	5	5
Granquist	1	1-4	4	3
Rath	6	9-12	42	21
Forsberg	5	3-3	5	13
Jones	0	0-2	2	0
Margual	0	0-0	1	0
Anderson	0	1-2	2	1
Totals	12	19-29	23	45
Randolph	24	16-23	23	50

Winside boys suffer road loss

The Winside Wildcats closed out the regular portion of their season Friday night with a 59-33 loss to a tough Newcastle squad on the road.

The Raiders continued their clip into the second half of the game and outdistanced the Wildcats 30-18 in the third and fourth quarters.

Kevin Jaeger scored nine points to lead the effort for Winside, and Kevin Falk netted six points. Rebounding was led by Falk with six boards and Mike Thies with four rebounds.

"We really played a good game in the first half," said Winside Coach Mark Freburg. "The kids put out a tough effort in the second half, but it's hard to come back against a team as strong as Newcastle."

"Mike and Kevin really had to battle for their rebounds underneath the boards. Newcastle is a very physical team."

In the junior varsity game, Newcastle won a 22-20 contest. Kevin Jaeger also led scoring in the reserve game with seven points.

Winside	4	11	5	13	23
Newcastle	10	19	17	12	59

Winside	FG	FT	F	TP
Da. Mundil	1	1-2	2	3
Do. Mundil	2	0-0	2	4
Voss	2	0-0	0	4
Roberts	0	0-0	2	0
M. Thies	1	3-4	2	5
Jaeger	4	1-2	3	9
K. Falk	3	0-0	4	4
Carstens	1	0-0	1	0
Totals	14	5-8	12	33
Newcastle	27	5-10	11	59

Wayne wins thriller at Pierce

A last second shot by Wayne's Don Larsen after an offensive rebound at the conclusion of overtime gave the Blue Devils a win in the last regular season game.

Larsen brought down an offensive rebound from a missed baseline shot by Rod Dahl and got the ball away and into the hoop as the buzzer sounded the end of the first overtime, giving Wayne an exciting 54-52 win.

Blue Devil Head Coach Bob Uhing was not satisfied with the total game performance of his team, although he said his team played well in the last few minutes of the fourth quarter and into the overtime period.

"It was a matter of looking by Wayne Pierce and you can't do that against a good ball club," said Uhing.

"Mentally, we were not ready to play as we normally are — not being aggressive offensively and defensively," he said.

"Defensively, we were not good at locking the Pierce shooters and we also gave up a some offensive rebounds."

"During the last two minutes of the game, the team did a good job of execution," he added.

After a Blue Devil time-out with 15 seconds remaining in the overtime period and the score tied at 52-52, Wayne executed a play which sprang Dahl open for a 17 footer, but the ball bounced out.

"The kids did a good job setting up the play and making sure it was a good shot. Rod took the shot with five seconds left and

that gave us enough time to get the offensive rebound. It didn't give them (Pierce) time to grab the rebound and go downcourt to score a basket," Uhing said.

Larsen scored a field goal in the final seconds of the fourth quarter to give Wayne a one point lead at 50-49. As Pierce's Adam Frasch came down the floor and attempted a field goal, he was fouled by Dahl.

Uhing called time out before Frasch, who finished the game with 16 points, went to the free throw line. "He (Frasch) was hot from the field and we just wanted to get him off the line."

Frasch made his first attempt to tie the score at 50-50 but missed his second shot to send the game into overtime.

Action in the early going of the game was close, as Wayne led 15-14 at the end of the first quarter and the score was knotted at 29-29 at halftime.

The Blue Devils recaptured the lead at third quarter's end, outscoring Pierce 14-11. However, Pierce scored 10 points to Wayne's seven points in the final quarter.

During the last few games, offensive rebounds have hurt the Blue Devils. During the final minutes of Friday night's game, Wayne did a good job of pinning out for defensive and offensive rebounds.

Wayne hit on approximately 43 percent of their field goal attempts and hit on 18 of 34 free throws.

The Blue Devils pulled down 35 rebounds, 11 more than Pierce... and were led in that

category by Larsen with 12 and Dahl with 11. Dahl finished the game with 19 points to lead all Wayne scorers.

Todd Kramer led all Pierce scorers with 20 points.

The Blue Devils begin high school tournament action at Wayne Friday evening when they host Columbus Scotus.

"They are a good basketball team and we better be ready to play. They were ranked at one time in the Class B poll," said Uhing.

"The team is really balanced and they can play eight or nine kids. They play hard and aggressive," he said.

In the reserve game prior to the varsity match-up, the Wayne Blue Devils scored a victory, with Scott Baker tossing in 27 points.

	14	15	11	10	2-52
Wayne	15	14	14	7	2-54
Wayne	FG	FT	F	TP	
Wayne	0	0	0	0	
Wayne	0	0	0	0	
Gross	1	0	1	3	2
Pick	1	7	1	5	9
Dahl	7	5	3	3	19
Larsen	6	4	7	4	16
Lueders	1	0	2	2	2
Ursviler	1	5	4	3	3
Hausmann	1	2	0	3	3
Totals	18	18	34	21	54
Pierce	18	16	23	18	52

wayne bowling

Junior highlights
 Chad Davis, 175; Troy Wood, 176; Jarrod Wood, 170; Mike Kupp, 157; Robbie Allen, 198, 152, 144, 491; Mark Creighton, 159; Carla Nelson, 160, 158, 450; Brian Sherman, 159; Darrin Garner, 144, 181, 150, 475; Kevin Maly, 186, 200, 159, 545; Kelly Mrsny, 154; Brent Pick, 154, 191, 155, 500; Scott Baker, 199, 191, 202, 383; Scott Milliken, 165.

Men's highlights
 Frank Woods, 202; Rod Huffman, 201; Ernie Swift, 210; Ted VonSeggern, 203; Val Kienast, 205, 227, 626; Jon Ellingson, 200; Rich Wurdinger, 207; John Rebsdorf, 221; Herb Hansen, 225, 577; Erwin Baker, 203; Dennis Phipps, 208, 599; Dennis Beckman, 202.

John Schaefer, 201; Dick Carlson, 204; Bryan Denkiau, 211;

Kim Baker, 219; Butch Sperry, 210; Rod Deck, 222; Wilmer Deck, 200; Duane Jacobsen, 211; Stan Soden, 217; Lee Weandor, 202; Kip Bressler, 217; Barry Dahlkoetter, 204, 210, 590.

Ken Spittigerber, 234, 619; Barry Dahlkoetter, 237, 597; Gary Waggoner, 207; Pat Dougherty, 200; Mike Nissen, 206; Jim Maly, 200; John Rebsdorf, 222; Dan Jaiven, 219; Radele Erleben, 234; Barry Dahlkoetter, 217, 200, 610; Chris Luaders, 204; Verlyn Stoltenberg, 206.

Women's highlights
 Joni Jaeger, 215, 503; Jackie Miller, 191, 493; Fran Nichols, 200, 492; Donna Frevert, 197, 503; Laurie Roberts, 183, 500; Lillian Wittler, 181; Rita McLean, 203, 187, 557; Leona Janke, 180; Fern Test, 194; Mildred Dangberg, 189; Esther Hansen, 199, 536;

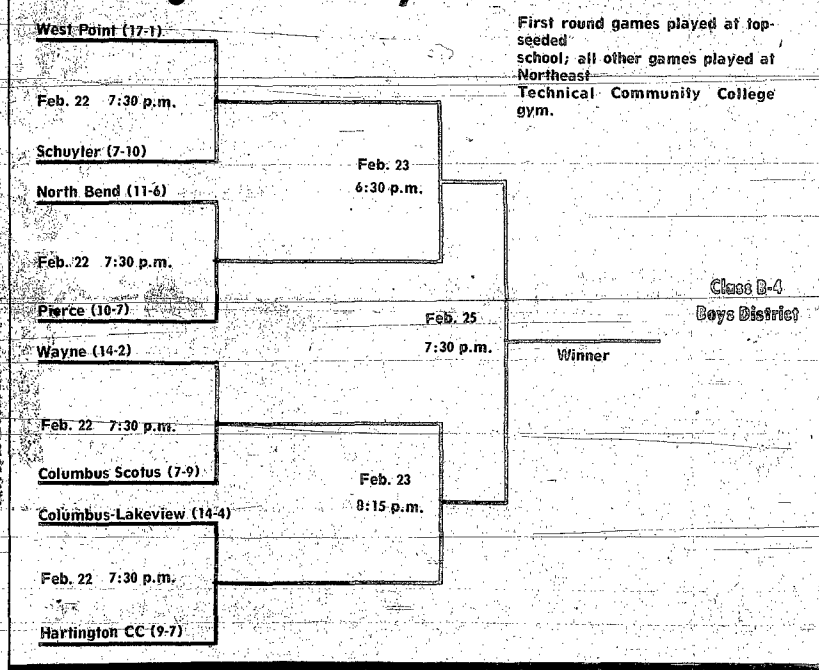
Joan Schaefer, 183; Kyle Ross, 183; Alta Meyer, 180, 482; Joni Holdorf, 197, 183, 552; Judy Sorenson, 199, 488; Sandra Gathje, 205, 510; Margie Kahler, 196, 184, 546; Jeanie Sturm, 197, 530; Bev Holdorf, 210, 542; Josie Bruns, 200, 519; Jackie Nicholson, 183; Jo Ostlander, 193, 509; Lois Netherday, 216, 534; Elaine Pinkelman, 180, 482; Geri Marks, 200, 495; Dawn Peter, 486; Teri Bowers, 216; Mildred Dangberg, 183, 517; Ione Roebber, 180; Sue Wood, 185, 507; Aida Jorgensen, 190, 507; Jackie Nicholson, 182, 388, 535; Cindi Jorgensen, 190, 523; Elaine Pinkelman, 209, 519; Tootie Lowe, 510; DIAnn Shulthies, 186, 501; Linda Janke, 193, 194, 530; Gwen Jorgensen, 188.

Cheryl Henschke, 226, 550; Adeline Kienast, 186, 224, 550; Jo McElvogue, 212, 487; Dorothy Hughes, 199; Carol Lackas, 194, 194, 554; Jean Jones, 191, 485; Diane Wurdinger, 186, 189, 195, 554; Pat Morris, 188, 189, 532; Alice Rohda, 183, 508; Addie Jorgensen, 187, 497.

Margie Kahler, 187, 490; Geri Marks, 184; Judy Sorenson, 184, 527; Linda Janke, 183, 500; Essie Kathol, 189, 489; Ione Roebber, 512; Wanda Hofeldt, 490; Judy Milligan, 499; Jessie Harner, 181; Holly Stoltenberg, 208, 505; Mary Lou Erleben, 196, 486.

Split conversions
 Donna Nelson, 5-10 split.
 Dorothy Hughes, 7-4-6 split.
 Jackie Nicholson, 6-7 split.
 Geri Marks, 6-7-10 split.
 Alta Meyer, 5-8-10 split.

Pairings listed for boys basketball districts



BOWLING

AT MELODEE LANES

Pizza Hut
 For Great Pizza After Bowling Or Anytime For Home Delivery
 375-2540

LES' STEAK HOUSE & LOUNGE
 4 p.m. to 1 a.m.
 Watch your favorite game in our lounge.
 Steak House
 5:30-10 p.m.
 Sunday Buffet - 11 to 1:30

STATE NATIONAL BANK & TRUST CO.
 122 Main
 Phone 375-1130

SIEVERS HATCHERY
 ANYTIME CHICKS & GOOCH FEED
 Phone 375-1020
 "Good Eggs to Know"

for all your food needs contact us.
 We sell results
BILL BARTELS
 Laurel, Nebr.
 256-3690

WALNUT GROVE
 SPECIAL Hamburger, French Fries, Slow Good Anytime \$2.95
THE EL TORO
 Lounge & Package

Schmidt
 IMPORTED
Heineken
 HOLLAND BEER
 East Hwy. 35

Grace Mead Doubles

WON	LOST
Hofeldt-Henschke	20 12
Erleben-Brown	19 13
John Miller	19 13
Stoltenberg	18 14
Austin Erleben	17 15
Willing-Sherbahn	16 16
Eckhoff-Magnuson	15 17
Bilstein-Banner	13 19
Spahr-Brockmoller	13 19
Echtenkamp-Stoltenberg	13 19
Melodie Lanes	14
Holly Stoltenberg, 208; Hofeldt-Henschke, 672, 1934.	

Go Go Ladies

WON	LOST
Lucky Strikers	22 6
Pin Pointers	22 6
Rolling Pins	20 8
Pin Pals	17 11
Nonconers	17 11
Road Runners	14 14
Bowling Buddies	13 17
Pin Hillers	9 19
High scores: Radelle Erleben, 234; Alley Cats	8 20
High scores: Jean Jones, 225, 544; Pin Hillers, 759; Rolling Pins, 2055.	

Monday Night Ladies

WON	LOST
Swan's	19 5
Melanie Equipment	17 7
Country Nursery	15 9
Vers Club	14 10
Campus Shop	13 11
Triangle Finance	13 11
Ray's Locker	11 13
Shear Designs	10 14
Greenview Farms	6 18
Wayne Hardware	4 20
Hank's Custom Work	4 20
Carhart's	4 20
High scores: Leli Netherday, 216; Teri Bowers, 216; Margie Kahler, 546; Shear Designs, 921, 2293.	

Junior League

WON	LOST
Big Leaguers	19 9
High Pointers	19 9
Killer Bees	16 12
Strike Force	15 13
Dragons	14 12
The Entertains	13 15
Knob Match	13 15
Triple Threat	7 21
The Thing	4 20
Pin Pounders	4 20
High scores: Troy Wood, 252, 607; The Entertains, 628, 1895.	

Community League

WON	LOST
Bir's GW Dry Cleaning	20 4
Blue Light	20 4
L & B Farms	16 8
Hunter-Burk-Mills Transfer	15 9
Northrup King	11 13
The Lumber Company	10 14
Golden Leaf Hybrids	10 14
Tom's Body Shop	6 16
Onsd Team	4 20
Lofter's Implement	4 20
High scores: Barry Dahlkoetter, 237; Ken Spittigerber, 619; Bir's GW Dry Cleaning, 647, 2058.	

Senior Citizens
 On Thursday, Feb. 14, 17 senior citizens participated in bowling. The Floyd Burt team defeated the Clarence May team 4266 to 4120.

High series and games were bowled by Elmer Wacker, 528, 218, 200; Swede Halley, 508, 190; Perry Johnson, 528, 196; Floyd Burt, 527, 233; Dan Wacker, 514, 177; Swede Halley, 510, 180; Ari Brummond, 488, 190; Glenn Walker, 458, 167; Dale Gutshalk, 467, 179; and Otto Baier, 464, 180.

WAYNE DISTRIBUTING
 IMPORTED
Heineken
 HOLLAND BEER
 Phone 375-3085

Going Out to Get?
RON'S BAR & Garage
 Is The Place
 Serving the finest in steaks and sea food!
 CARROLL, NE

Authorized Dealer For
Radio Shack
 The Biggest Name in Little Computers

T & C Electronics
 THE WAYNE HERALD

THE WAYNE HERALD
 For All Your Printing Needs

Make Us Your Headquarters For Prescriptions & Photo Supplies
GRIESS REXALL

Pabst Blue Ribbon



Photography: Chuck Hackenmitter

Steaming hot

A LOAD of hot asphalt is transported to patching sites within the Wayne city limits.

wakefield news

mrs. walter hale 287-2726

SENIOR CITIZENS

Volunteers play a very important part in the operation of the Wakefield Senior Citizens Center. Some of the labor is a matching funds arrangement with the area agency in Norfolk. Other hours are important because they must be reported as proof that the facilities are being used and to what extent they are used. A "Roses to You" tribute to our volunteers is being emphasized throughout the month of February; and the tables are decorated with individual roses containing the name of participants and their hours of contribution. Roses have also been presented to community people who volunteer their time. Receiving these roses were Leffy Olson, Carol Nixon, Sandra Mattes and the Wakefield-Republican. Thanks is extended to all for time and efforts.

John Vikon explained medicare policy and some of the changes in health care available at the Wakefield Hospital Feb. 7.

On Feb. 8, Joyce and Herb Niemann of Carroll showed slides of their trip to Jordan. Twenty-four seniors and their coordinator Jean Dougnik from the Emerson center were guests for dinner and the program.

On Monday, 40 people viewed part one of the film, "Forever Young." Part two was to be shown Friday.

concord news

mrs. art johnson 584-2925

Mr. and Mrs. Norman Anderson attended the capping for their daughter, Sandra Sieck in the Marion Auditorium at Mount Marty College in Yankton, S.D., Feb. 10. The pledging ceremony was for 38 students of the sophomore nursing class. It was followed by a reception for the class, their families and friends.

After the capping ceremony in Yankton, the Andersons went to Brady to visit in the Jerry Stanley home and get acquainted with their new grandson, Raymond Newell.

Hollywood Video

FEBRUARY VCR SALE
*Rentals VCR only \$2.99
with \$75.00 free gift package
Specials every Mon.-Thurs.-Wed.
*2.99 Player & 2 Movies
Free Popcorn Every Day

GAY THEATRE



Micki & Maude
COLLEEN HENNER (PG-13)
Feb. 18-21 - Nightly at 7:30 p.m.
Fri.-Sat. Home, Late Show 7:20-9:15
Reservations Tuesday 2 p.m. Sunday
Support Showcases 2 p.m. Sunday

The musical trio of Cliff Fredrickson, Ralph Olson and Wayne Gilliland entertained at the center Tuesday on the accordion, violin and harmonica.

The regular board meeting was held on Wednesday and the Valentine party on Thursday.

Today (Monday) everyone is asked to bring a tall-tale or a joke to share.
Tomorrow afternoon (Tuesday), several board members and Merdell Holm will be attended a contract review meeting at the Norfolk office. Tuesday is also the card party at 7:30 p.m.

Wednesday, Feb. 20, Pastor Greenleaf will lead a Lenten meditation at 12:45 p.m.
A trivia game is planned for Thursday, Feb. 21 at 12:45 p.m. The men from the Norfolk center have been challenged to a pool tournament and the date has been tentatively set for Feb. 22.

Robert Kaplin from the Norfolk office will be at the Wakefield Senior Citizens Center Tuesday, Feb. 26 to help conduct a public hearing. This will be an opportunity for the people of the community to express their feelings about programs already conducted by the center and whether or not the needs of area residents who are over 60 years of age are being met. Any suggestions of additional services and activities are welcome. At this time any questions concerning programs will try to be answered. The meeting will begin at 1 p.m. on Tuesday, Feb. 26.

leslie news

mrs. louise hansen 287-2968

Mrs. Clarke Kai, Mrs. Terry Kai and Mrs. Brian Kai were guests at a baby shower the afternoon of Feb. 10 honoring Mrs. Shawn Kai and infant daughter, Jade Kairine, which was held in the Sue Jensen home in Norfolk.

Gene Schmitt of Auburn and George Schuff of Pender were Feb. 10 afternoon guests in the Hill Hansen home.

Mr. and Mrs. Roger Leonard and Brent and Loretta Marshall were Feb. 9 supper guests in the

Bill Greve home honoring Mr. and Mrs. Greve on their 26th wedding anniversary.

Mrs. Kenneth Baker and Clarence Baker were honored on their birthdays Feb. 8 when evening guests in the Kenneth Baker home included Mr. and Mrs. Clarence Baker, Mr. and Mrs. Terry Baker, Kai and Jared, Mr. and Mrs. Burnett Baker, Mr. and Mrs. Paul Fisher, Mrs. Gertrude Utecht, Alvin Ohquist, Mr. and Mrs. Emil Muller, Mrs. Louie Hansen and Erwin Baker.

DR. LARRY M. MAGNUSON, OPTOMETRIST
Magnuson Eye Care
112 E. 2nd, Winochaff Mall
Wayne, Ne 68787
For Appointment Call 375-3160

HEARING AIDS
Leading Brands Available
WEDNESDAY, FEBRUARY 20
10:00 a.m. - 2:00 p.m.
Wayne Senior Citizens Center
306 Pearl - Wayne - 375-1460
If you can't come in - call for home appointment
* Service and repairs - all makes
* Testing
* Battery special - buy one package at regular price, receive 2nd package free. Limit two packages per person.
Iowa Hearing Aid Center
219 6th Street - Sioux City, IA
712-258-9194
SPECIALIZING IN: ALL IN EAR AIDS

carroll news

LADIES AID AND LWML
St. Paul's Lutheran Ladies Aid and LWML met Wednesday at the church fellowship hall with nine members and a guest, Mrs. O. Jones.
Mrs. Ernest Junck was in charge of devotions and Mrs. Edward Fork accompanied for group singing.
Mrs. Dean Junck conducted the business meeting, Mrs. Murray Leicy reported on the last meeting and read the resume of 1984. Mrs. Dennis Junck read the treasurer's report.
Mrs. Dean Junck opened the meeting by reading "The Clock in the Kitchen."
Mrs. Dean Junck and Mrs. Murray Leicy attended the LWML Wayne Zone Executive board meeting that was held Jan. 14 at Grace Lutheran Church in Wayne.

The group discussed plans for a Centennial project to be when Carroll celebrates 100 years in July 1985. Members were reminded to submit recipes for the Womens Club centennial cook book.
Plans were made for a paper drive to be held March 10, weather permitting with the date to be March 17. A truck will be at the church and anyone wishing more information may call 585-4857.

The LWML Spring Workshop will be held April 16/17 Immanuel Lutheran Church in Laurel.
The International LWML Convention will be held July 21-25 at Ames, Iowa and bus tours are planned from the Wayne Zone.
Mrs. Ervin Wittler, reading leader, read a poem, "Reach Out, Pray Hard and Hang On."
Mrs. Arnold Junck, Christian

growth leader, was in charge of a skit entitled "Utensils for Christian Life." She was assisted by Mrs. Ernest Junck, Mrs. Murray Leicy, Mrs. Dennis Junck and Mrs. Dean Junck.
Pastor Mark Miller was in charge of the lesson taken from the book of Daniel.
Mrs. Ernest Junck was hostess. Mrs. Murray Leicy will host the Wednesday, March 13 meeting.

METHODIST WOMEN
Eight members and three guests, Mr. and Mrs. Wayne Kerstine and Mrs. Clarence Morris, answered roll call with a favorite parable when the United Methodist Women met Wednesday, Feb. 13 at the church fellowship hall.
Mr. and Mrs. Kerstine showed slides and narrated of the trip to Australia last year.
Mrs. Merlin Kenny was acting president and conducted the business meeting. Mrs. Gene Reltwisch reported on the last meeting.

Mrs. Louise Boyce reported that get well cards were sent to Walter Lage, Kyle Schaffer, Lowell Rohlf and Kelli Davis.
A supper dinner will be served for the public on Saturday, Feb. 23 at the church fellowship hall. Those in charge of arrangements are Mrs. Merlin Kenny, Mrs. Kenneth Hall and Mrs. Perry Johnson.
Mrs. Lyle Cunningham and Mrs. Clarence Morris will be in charge of the "Country Store."
Mrs. Merlin Kenny served.
The next meeting will be March 13.

STAR EXTENSION CLUB
The Star Extension Club met Tuesday evening at the Don Harmeler home with seven members present. Mrs. Keith Owens conducted the meeting and Mrs. Dale Stoltenberg reported on the last meeting and read the treasurer's report.
Roll call was a favorite sandwich.
Mrs. Milton Owens read "Inexpensive But Enjoyable Entertainment for the Family."
Mrs. Keith Owens reported on the county convention that was held in January.
Members were reminded to submit recipes for the Carroll Womens Club centennial Cookbook.
Mrs. Dale Stoltenberg had the lesson, "From the Earl to the 80th."
Mrs. Stoltenberg will host the club on March 12.

SENIOR CITIZENS
Twenty-two were present Monday when the Senior Citizens met at the fire hall for an afternoon of cards.
Mrs. Enos Williams served. Mrs. Adolph Rohlf of Winside was a guest.
Prizes went to Frank Cunningham, Mrs. Lena Reltwisch and Mrs. Perry Johnson.
Mrs. Louise Boyce will host the meeting today (Monday).

WOMENS FELLOWSHIP
Seven members were present when the Congregational Womens Fellowship met Wednesday at the Lloyd Morris home.
Mrs. Morris conducted the business meeting and Mrs. T.P. Roberts reported on the last meeting.

Mrs. Roberts had the devotions and scripture reading.
Pastor Gail Axen was also present.
The group plans to meet on Feb. 27 at the church, weather permitting.
The afternoon was spent quilting.

HILLTOP LARKS
Mrs. Darrell French hosted the Hilltop Larks Social Club at her home Tuesday. Guests were Mrs. Paul Brader of Norfolk and Mrs. Schmale. Mrs. French conducted the meeting and Mrs. Perry Jones reported on the last meeting.
Each member will send a Valentine to Mrs. Opal Lindsay, who lives in Norfolk.
Mrs. John Williams read "Message Taker Hangs It Up."
Mrs. Ray Roberts won high at cards and Mrs. Paul Brader, low.
Mrs. John Williams will host the March 12 meeting.

INSTALLATION HELD
Installation of church officials and Sunday school staff was held Feb. 10 during worship service at St. Paul's Lutheran Church.
Mrs. Murray Leicy, Sunday school teacher presented attendance certificates to Pam and Maribeth Junck and Brent Tietz. Pastor Mark Miller was in charge of the installation.
Mr. and Mrs. Joe Claybaugh spent from Feb. 5-8 in Columbus where they attended the Nebraska Poultry Industry Convention.
On Feb. 7, Bill Claybaugh, Kevin Davis, Mrs. Dennis Rohde,

Mrs. Mable Janssen and Mrs. Richard Wolslager, employees at the Claybaugh Poultry, House, went to Columbus where they attended the convention and banquet.
Joe Claybaugh was inducted into the Nebraska Poultry Industry Hall of Fame, preceding the banquet.
Feb. 10 afternoon guests in the Clarence Morris home to honor the host's birthday were Mr. and Mrs. Daryl Field and Carrie Jo Wisner, Mr. and Mrs. Clair Swanson of Wayne and Mr. and Mrs. Leo Stephens.

Mrs. Irene Larsen entertained at a Valentine coffee Thursday morning. The event honored the birthday of Mrs. LaRue Leicy. Guests were Mrs. Leicy, Mrs. Alice Wagner, Mrs. Clarence Morris, Mrs. Arnold Junck, Mrs. Esther Balton, Mrs. Lem Jones, Mrs. Tom Bowers, Mrs. Enos Williams and Mrs. Edward Fork.

Mr. and Mrs. Merlin Kenny spent Feb. 8-11 in the Arnie Siefken home at Jamestown, N.D.
Spec. 4 Mike Reltwisch arrived from Germany where he had been stationed for 18 months to visit his parents, Mr. and Mrs. Gene Reltwisch, until March 17 when he will report to Fort Hood, Texas where he will be stationed.

Mr. and Mrs. Darrell French flew to Orlando, Fla. on Jan. 31 and came home Feb. 5.
While there they visited the Epic Center, Magic Kingdom and Cypress Gardens.

laurel news

mrs. gary lute 256-3344

MARANATHA FELLOWSHIP
The Maranatha Fellowship from the Laurel United Methodist Church held their Valentine mystery supper at the church on Feb. 10 with 34 members and guests in attendance.
On the serving committee were Jim and Carla Erwin, Brian and Ellie McBride and Cynthia Strawn. On the menu were: Love Bugs carrots, I dig you-tork, sweet nothings corn, hotlips coffee, handsome hunk ham, pucker power lemonade, I pine for you, toothpick, cupid arrow knife and many other mysterious guesses.

Congregate Meal Menu
Monday, Feb. 18: Meatloaf, escalloped corn, cauliflower, salad, orange juice, bun with butter, plums.
Tuesday, Feb. 19: Creamed chicken on mashed potatoes, green beans with dill sauce, cranberry salad, roll with butter, apple pie.
Wednesday, Feb. 20: Beef stew, pineapple salad, cottage cheese, celery stuffed with peanut butter, garlic bread, peaches.
Thursday, Feb. 21: Pork cutlets with gravy, whipped potatoes, brussels sprouts with Polonaise sauce, fresh fruit salad, bun with butter, cookie.
Friday, Feb. 22: Hamburger gravy on biscuit, layered lettuce salad, corn, muffin with butter, cherry dessert.

Devotions were given by Steve and Star Smith, Dennis and Joan Dickey and Diann Lake. Waitresses were Stacy and Marcy Strawn, Emily and Mandy McBride and Nicole Brittlet.

The next meeting will be a potluck dinner at the church on March 3, followed by a bowling party at Hillside Bowl.

FARMERETTES
The Farmerettes Extension Club from Laurel met in the home of Mrs. Lillian Halsch with

eight members in attendance on Tuesday. Roll call was answered by giving their favorite color.

Mrs. Maxine Halsch, Family Well-Being chairman, gave a health report. The lesson was given by Mrs. Luetha Rosacker and Mrs. Margaret Dickey. The title of the lesson was "Analyzing Color in your Wardrobe."
The next meeting will be held on Tuesday, March 11 in the home of Mrs. Lili Twiford. Members are to read the "Listening with Your Heart as Well as Your Ears" pamphlet ahead of time.

METHODIST WOMEN
The Laurel United Methodist Women will be meeting at 2 p.m. on Wednesday, Feb. 20 for their monthly meeting. The greeting hostess will be Mrs. Fern Tuffie. Mrs. Doris Lipp, Mrs. Ruby Smith and Mrs. Violet Wickert will give the lesson on "The Family Under Pressure."

Hostesses will be Mrs. Jane Cochran, Mrs. Florence Tuffie, Mrs. Mildred O'Garra, Mrs. Joan Westadt and Mrs. Myrtle White.

BOOK CLUB
The Laurel Book Club will be meeting today (Monday) at 8 p.m. They will meet in the home of Ruth Ebmeier with Ella Larson as co-hostess.
Mrs. Judi Harrington will be the reviewer.

HILLCREST CARE CENTER CALENDAR
Monday, Feb. 18: Bingo, 2 p.m.
Tuesday, Feb. 19: Harry Wallace on the organ, 10:30 a.m.; Lillian Dennis birthday.
Wednesday, Feb. 20: Sing-a-long, 9:30 a.m.; The Cornhusker Trio, 2 p.m.

Thursday, Feb. 21: Volunteers will do hair, 9 a.m.; 5th grade, 1:45 p.m.; movie, 2:05 p.m.; United Methodist Group, 6:30 p.m.
Friday, Feb. 22: Bible study, 2 p.m.
Sunday, Feb. 24: Logan Center United Methodist Church services, 1:30 p.m.

SENIOR CITIZENS CENTER CALENDAR
Monday, Feb. 18: Center open from 10 to 12 and 1 to 5; crafts and quilting, 1 p.m.
Tuesday, Feb. 19: Center open from 10 to 12 and 1 to 5.
Wednesday, Feb. 20: Center open from 10 to 12 and 1 to 5.
Thursday, Feb. 21: Center open from 10 to 12 and 1 to 5.

Friday, Feb. 22: men's afternoon, 1 to 5.
Friday, Feb. 22: Center open from 10 to 12 and 1 to 5; pinocle and canasta, 2 p.m.

SCHOOL CALENDAR
Monday, Feb. 18: Boys basketball districts at Wayne, 6:30-8:30 p.m.
Tuesday, Feb. 19: Host C-2 boys district basketball.
Wednesday, Feb. 20: Lenten breakfast, 7:30 a.m.; St. Mary's Church for senior high youth.
Thursday, Feb. 21: Host C-2 boys basketball district finals, 7:30 p.m.; Cub Scouts, home ec room, 3:30 p.m., safety belt film.
Saturday, Feb. 23: Snow date, boys C-2 district basketball; instrumental music clinic, Coleridge, Clark Division.

Northwestern Mutual Life Ins. Co.
and
Janice Ellis, Field Director, Wayne, NE
Is Pleased To Announce
The Appointment Of
Randall Patefield
Laurel, NE as special agent for the Northwestern Mutual Life Ins. Co. to serve you in the personal and business insurance needs in the Laurel, Cedar County area. Randy is a member of the W.D. Thompson Agency, Sioux City, Iowa and a native of the Laurel, NE area. Get to know Randy. Call him at 256-3791.
W.D. Thompson Agency
1104 Sixth Street
Sioux City, IA 51102
712-277-2250

FREE AND EASY.

A CAR REPAIR GUARANTEE THAT LASTS... A LIFETIME.

Free? Easy? Incredible! But believe it. It's our free Lifetime Service Guarantee and here's how easy it is to get your car repairs guaranteed for as long as you own your vehicle. If you ever need to have your Ford, Mercury, Lincoln or Ford Light Truck fixed, you pay once and the repairing dealer guarantees that if the covered part ever needs to be fixed again, he'll fix it free. Free parts. Free labor. For as long as you own your vehicle. It doesn't matter where or when you bought it and it covers thousands of parts. No other repair guarantee covers so much for so long. So come in to a participating dealer today and find out more about the incredible free Lifetime Service Guarantee.

We fix cars for keeps.

FORD **LIFETIME SERVICE GUARANTEE** **MERCURY LINCOLN**

119 East Third
Wayne, Nebraska
373-3780

Arnie's FORD-MERCURY

News Hanceck 244-4265

METHODIST WOMEN

The United Methodist Women met Feb. 12 with 31 members answering roll call.

Rev. Sandy Carpenter presented the lesson, "Shalom Women." Dottie Wacker and Helen Hancock assisted in reading. All joined in singing "God of Grace and God of Glory." Rev. Carpenter sang "Leave It There" and "All Is Well." A Prayer and Self Denial offering was taken.

Elsie Longnecker, vice president, called the meeting to order. The secretary's report and treasurer's report were approved as read.

Thank you cards were read from Jo Thompson and Lenore Davis for the Christmas gifts given.

Anna Wylie reported sending a get-well card to Deanna Wills. A card was signed for Jo Thompson.

475 pennies were collected for the Write of Pennies.

Helen Hancock led the new member on the World Day of Prayer committee. She joins Helen Holtgrew and Vicky Thies. World Day of Prayer will be held March 1 at the Trinity Lutheran Church.

Guest day will be held May 9 at 1:30 p.m. Co-chairpersons are Dottie Wacker and Helen Holtgrew.

Elsie Longnecker was presented a corsage for Missions in honor of her birthday. All sang happy birthday to her.

The meeting closed with all joining hands in the Lord's Prayer.

Helen Holtgrew was hostess with Charlotte Wylie serving. The next meeting will be March 12 at 2 p.m.

YOUTH FELLOWSHIP

President Cindy Berg called the Feb. 13 meeting of the United Methodist Youth Fellowship to order.

Money raising projects were discussed and letters were written to all possible members to find out if they are willing to participate in a bake sale April 13. Dues were discussed and tabulated until a response is received from the letters.

Cindy Berg will make a calendar schedule of future meetings for each member.

The Youth will serve breakfast following sunrise services on Easter. The tentative menu will be scrambled eggs with bacon

bits, toast, cinnamon rolls, orange and grape juice, and coffee.

The Youth will hold Lenten services on March 6 and 20 at 7 p.m. Becoming puppeteers was discussed by the group.

The next meeting will be March 3 at 7 p.m. Sponsor Helen Hancock will lead the lesson and sponsor Jeanine Longnecker, devotions.

ADVISORY COUNCIL

The Winsted Public School Advisory Council will meet this evening (Monday) at 7:30 p.m. at the high school library.

The topic to be discussed will be foreign language and the new state requirements for schools.

All parents are invited to attend this meeting.

BROWNIES

Brownies met Feb. 11 after school with 14 members present. Tonya Hoyer held the flag during the flag salute.

President Tammy Thies took roll call. Treasurer Christi Oberle collected the dues.

The Brownie Smile Song was sung by the group.

Ribbon and beaded barrettes were made by the Brownies. Paula Hoyer assisted the girls.

Leader Cathy Holtgrew served refreshments.

The next meeting will be today (Monday), after school in the elementary library.

REGIONAL CENTER

The Norfolk Regional Center West, was entertained Feb. 10. Cyril Hansen played the accordion and organ and Otto Field played the accordion.

Those attending were Mr. and Mrs. Cyril Hansen, Mr. and Mrs. Leo Hansen, Mr. and Mrs. James Jensen, Mrs. Don Langenberg and Lydia Witte, Mr. and Mrs. Otto Field were guests.

Ida Fenske and Mrs. Merlin Malchow furnished extra food. Cake and coffee were served to the patients.

The next get together will be March 10 at 1:30 p.m.

SCHOOL CALENDAR

Monday, Feb. 18: Advisory council, 7:30 p.m., high school library.

Tuesday, Feb. 19: Boys basketball journey at Lyons.

Thursday, Feb. 21: Boys basketball journey at Lyons.

Saturday, Feb. 23: Wayne State Jazz Festival; Bemmer speech in fraternal.

SECURITY LAND TITLE CO.

Abstracting & Title Insurance Wayne County

Call Collect (402) 494-6222

Accounting

Max Kathol

Certified Public Accountant
Box 389
108 West 2nd
Wayne, Nebraska
375-4718

Chiropractor

Chiropractic Health Center of Wayne

Office Hours:
Monday-Friday
9:30-5:30

Dr. Darrell Thorp, D.C.

112 E. 2nd Street
Mineshaft Mall
Wayne, NE
375-3399

Emergency 375-3351

Dentist

WAYNE DENTAL CLINIC

S.P. Becker, D.D.S.

Dennis Timperly, D.D.S.

Mineshaft Mall
Phone 375-2889

Finance

The Triangle

Loans For Any Worthwhile Purpose

Real Estate - Vacations
Appliances - Cars - Etc.
Maximum \$25,000

100 West 2nd 375-1122

Financial Planning

George Phelps
Certified Financial Planner

416 Main Street
Wayne, NE 68787
375-1848

IDS
An American Express Company

Paula Pflueger
Investment Representative

307 Pearl - PO Box 337
Wayne, NE 68787
Phone (402) 375-4172

Edward D. Jones & Co.

375-3610

SAV-MOR PHARMACY
Phone 375-1444

Insurance

First National Agency

301 Main
Phone 375-2525

Dick Ditman, Manager

Independent Agent

DEPENDABLE INSURANCE
FOR ALL YOUR NEEDS
Phone 375-2696

N.E. Nebr. Ins. Agency

Wayne
111 West 3rd

Aetna
LIFE & CASUALTY

Aetna Life & Casualty
112 West Second
Life • Health
Group Health
Steve Muir
375-3545
Gary Beehle
375-3525

KEITH JECH, C.L.U.

All Types of Insurance and Real Estate

375-1129
316 Main Wayne

State National Insurance Company

Insurance - Bonds in Reliable Companies
State National Bank Bldg.

122 Main Wayne 375-1888

Aid Association for Lutherans

Application, Wm. Fraternal Insurance

IRA - Health Estate Analysis
James P. Schroeder, FIC
256-3572

Jack Rohrborg, FIC
375-2299

Optometrist

WAYNE VISION CENTER

DR. DONALD E. KOEBER

OPTOMETRISTS

313 Main St. Phone 375-2020
Wayne, Ne.

Pharmacist

Will Davis, R.P.
375-4249

Cheryl Hall, R.P.
375-3610

Physicians

WAYNE FAMILY PRACTICE GROUP P.C.

Willis L. Wiseman, M.D.
James A. Lindau, M.D.
Todd H. French, M.D.
David Wachs, M.D.

214 Pearl Street Wayne, NE
Phone 375-1090

HOURS: Monday-Friday 8-12 & 1:30-5:30, Saturday 8-12

BENTHACK CLINIC

215 W. 2nd Street
Phone 375-2500
Wayne, Nebr.

That's about the size of it.

Robert Wylie
Precision Hearing Aids, P.C.

For Hearing Test in Home or Office, Call (402) 371-9465
1119 Norfolk Ave.
Norfolk, NE 68701

Plumbing

For All Your Plumbing Needs Contact:

Jim Spethman
375-4499

Spethman Plumbing
Wayne, Nebr.

Real Estate

REAL ESTATE SPECIALISTS

- We Sell Farms and Homes
- We Manage Farms
- We Are Experts in these Fields

MIDWESTLAND CO.
Phone 375-3335
206 Main - Wayne, Nebr.

Services

Tired of Garbage Clutter From Overstuffed Coolidge Cans?

Twice a Week Pickup If You Have Any Problems
Call Us At 375-2147

MRSNY SANITARY SERVICE

Wayne MINI-STORE
Storage Bins
5'x10'-10'x10'
10'x20'-10'x30'
All 12' High

Call:
Roy Christensen
375-2767
OR
Jim Mitchell
375-2140

WAYNE CARE CENTRE
Where Caring Makes the Difference
918 Main Phone 375-1922

Services

ELLIS ELECTRIC
Wayne 375-3566
Allen
635-2300 or 635-2456

Kramer's Fuller
Brush Products
Brooms & Hair Brushes,
Cleaning Aids, Beauty Aids &
Jewelry, and much more.
Call us at 375-2988
216 Fairground Ave.
Woehter Trailer Ct. Lot 42
Wayne, Nebr.

FARMERS NATIONAL CO.

1820 Dodge
Omaha, Nebr.
Professional Farm Management
Sales - Loans - Appraisals
Jerry Zimmer
Box 456 375-1176

RADIATORS REPAIRS

We do the job right!

M & S RADIATOR
419 Main
Phone 375-2811

Wayne City Officials

Mayor - Wayne Marsh 375-2797
City Administrator - Philip A. Kloster 375-1733
City Clerk-Treasurer - Norman Melton 375-1733
City Attorney - Olds, Swarts & Entz 375-3505
Counchmen - Leon Hansen 375-1242
Carolyn Filter 375-1510
Larry Johnson 375-2864
Darrell Fuelberth 375-3205
Keith Mosley 375-1735
Jim Craun 375-3126
Darrell Heier 375-1838
Freeman Decker 375-2801
Wayne Municipal Airport - Orin Zach, Mgr. 375-4694

EMERGENCY 911
POLICE 375-2625
FIRE CALL 375-1122
HOSPITAL 375-3800

Wayne County Officials

Assessor: Doris Stipp 375-1979
Clerk: Orgetta Morris 375-2288
Associate Judge: Laverna Hilton 375-1622
Sheriff: LeRoy Janssen 375-1911
Deputy: Doug Mubs 375-4281
Supt.: Bob Sheckler 375-1777
Treasurer: Leon Meyer 375-3885
Clerk of District Court: Joann Ostlander 375-2260
Agricultural Agent: Don Spitz 375-3310
Assistant Director: Thelma Moeller 375-2715
Attorney: Bob Enz 375-2311
Surveyor: Clyde Flowers
Veterans Service Officer: Wayne Denklau 375-2764
Commissioners: Dist. 1: Merlin Beiermann
Dist. 2: Robert Nissen
Dist. 3: Jerry Fospitt
District Probation Officers: Herbert Hansen 375-3433
Merlin Wright 375-2416

Hoskins news

MISSIONARY SOCIETY

The Immanuel Women's Missionary Society met at the home of Mrs. Erwin Ulrich Wednesday afternoon.

The meeting opened with group singing of the hymn, "Love Divine" and Mrs. Bill Fenske presided at the business meeting.

Roll call was a scripture verse. The secretary and treasurer's reports were given by Christine Lueker and Mrs. George Wittler, respectively.

The group sang, "America, the Beautiful."

Several cheer cards were sent. Election of officers was held with all officers re-elected. They are Mrs. Bill Fenske, president; Mrs. Erwin Ulrich, vice president; Christine Lueker, secretary; and Mrs. George Wittler, treasurer.

Christine Lueker gave the lesson on the topic, "Greater Love."

Mrs. George Wittler had the scripture reading. Mrs. Erwin Ulrich had charge of the Prayer Calendar on Southeast Asia.

The meeting closed with singing of the Battle Hymn of the Republic.

The March meeting will be omitted. The next meeting will be on April 10 with Mrs. George Wittler.

20TH CENTURY CLUB

Mrs. Bill Willers was hostess.

when the 20th Century Club met Tuesday, Mrs. Don Johnson, president, opened the meeting by reading, "Memorable Thoughts of Abraham Lincoln." Roll call was "How I Met My Valentine."

Mrs. Kenneth Bauer reported on the previous meeting and gave the treasurer's report.

Several cheer cards were sent.

The club made plans for an Ethnic dinner in April and members are to bring recipes pertaining to an Oriental dinner to the next meeting.

Mrs. Alvin Wagner and Mrs. Willers presented the lesson on "Uses of Frozen Bread Dough."

The next meeting will be on March 12 with Mrs. Kenneth Bauer.

HOMEMAKERS CLUB

The Hoskins Homemakers Club met with Mrs. Emelia Walker Tuesday afternoon. Mrs. Erwin Ulrich brought and displayed a picture, commemorating "Lincoln's birthday."

Mrs. Ezra Jochens read a poem, "The Wisdom of Lincoln." Mrs. Frieda Meierhenry read, "Please Remember." Mrs. Emelia Walker read an article on "February Holidays." Mrs. Frieda Bendin read an article about Martha Washington and also a poem, "This Old Trunk."

Mrs. E.C. Fenske read a poem, "February."

The hostess gave several hints on "Uses of Baking Soda."

The afternoon was spent playing Hearts with Mrs. Anna Falk, winning the prize.

The next meeting will be on March 12 with Mrs. Frieda Bendin.

PEACE GOLDEN FELLOWSHIP

Mr. and Mrs. Ezra Jochens and Rev. and Mrs. John David were hosts when the Peace Golden Fellowship met at the Peace Church Monday afternoon.

Willis Reichert, president, conducted the business meeting. Mrs. Ezra Jochens read the report of the previous meeting and gave the treasurer's report.

Table games provided the afternoon's entertainment.

The group will not meet in March and plan their next meeting for April 8.

Dinner guests in the Mr. and Mrs. Alvin Wagner home Feb. 10 for the hostess' birthday were Mr. and Mrs. Leo Froscher and family of Hader, Mr. and Mrs. Bill Gries and family of Elkhorn, Mrs. Marie Wagner, Mr. and Mrs. Randy Wagner and Shelly and Missy Reeves.

NEED NEW WINDOWS OR THINKING OF NEW SIDING THIS YEAR?

We will custom manufacture any size or type of storm or ordinary window.

Check Our Window Specials

THE WINDOW SHOP

1514 South 1st
Norfolk, NE 68701
375-7382 or evenings
630-2489 ask for Rich

Whose HIGHEST quality products and workmanship are still affordable.

Picture Your Sweetheart And Save



COUPON

12 Exposure Roll \$2.69
15 Exposure Disc \$3.49
24 Exposure Roll \$4.99
36 Exposure Roll \$6.59

Offer good on single set of standard size prints. Limit one roll with this coupon (not valid with any other coupon offer). Offer expires in 7 days. Coupon redeemable at this store only.

We use **Kodak PAPER** for a Good Look


YES, WE OFFER ONE DAY SERVING ON PHOTO FINISHING

COUPON GOOD THROUGH FEB. 21, 1985

Coupon good for regular rolls of standard size prints. C-41 process only.

Please present coupon with film when you bring it for finishing.

Sar-Mor Pharmacy
1022 Main St. Wayne 375-1444



your money DOESN'T WORK FOR YOU, STUCK IN A JAR

Preserving jars are fine for jams and jellies, but not for your hard-earned cash. For that you need a place where it won't just sit idly by... where it's protected by the FDIC and where it will have some room to grow. Like one of our many savings accounts. Your money will work for you earning interest, and will be insured for up to \$100,000. Why not start yours now?

The State National Bank and Trust Company
Wayne, NE 68787 • 402 375-1130 • Member FDIC
Main Bank - 122 Main • Drive-In Bank - 10th & Main

Classified

The Wayne Herald, Monday, February 18, 1985

WE WOULD like to thank all our relatives and friends for all the nice cards, gifts, flowers, balloons and cake for our 53rd anniversary. It will always be a day to remember. Herbert and Doris Eichenlaub. 118

I'D LIKE to thank my friends, family and relatives for the kindness they showed me while I was in the hospital with their prayers, gifts, phone calls, flowers and visits. Also for all the delicious food brought in after I returned home. Also to Drs. Hehner and Adams and the Lutheran Community Hospital-Nursing staff for their excellent care and to Dr. Heisinger for his prayers and visits. All was very much appreciated. Mrs. Walter Fleer Jr. 118

FOR SALE: Wakefield residence. Large corner lot. House in need of repairs, but ideal for investor, commercial builder or weekend repair man. Great potential for rental property or personal residence. Only \$8,500 for house and lots. Contact Pat Gross, Triangle Finance, Box 111, Wayne, NE. 68787. Phone 375-1132. 022zf

REAL ESTATE
THINKING OF SELLING YOUR HOME
See or Call Us
PROPERTY EXCHANGE
112 Professional Building
for sale

WANTED: Engineering Secretary. Send resume to: RR3, Box 112, Pender, NE 68047. 1715

FEDERAL STATE and Civil Service jobs now available in your area. Call 1-619-569-8304 for information. 24hours. 114

GRAVEL, SAND AND BLACK DIRT: Pilger Sand and Gravel, 394-3303, or Ron Willers, 396-3142. 024ff

NOTICE: A pre-bidding information meeting will be held at the Goldenrod Hills Community Action Council Office in Walhalla, S.C. at 1 p.m. Feb. 20, 1985 for persons interested in contracting weatherization services on approximately 200 homes in Burlington, Georgia, and Dixon, Madison, Stanton, Thurston, and Wayne Co. is installing and furnishing weatherization materials such as: caulking, weatherstripping, glass repair, primary doors and windows, storm windows, and attic and sidewall insulation. At this time specifications and bidding packets will be available. Three references will be required. Please bring the right to reject and all bids. Bids must be marked "sealed bids" - an equal opportunity employer, for more information call (402) 846-5493. Grhvac bidding office. 1141z

automobiles
FOR SALE: Repressed, black 1979 Chevrolet 1.5 Ton Fleetstar Pickup Model Co. 10933. Excellent condition, 75,000 miles. Sale is by closed bid to the Triangle Finance Company, 109 West 2nd Street, Wayne, NE 68787. All bids must be presented to the Triangle Finance Company no later than 11:00 a.m. Saturday morning, February 23, 1985. The Triangle Finance Company retains the right to accept or reject any and all bids. High bidder must pay cash or have prior credit arrangements on day of pickup. Call for more information. Cars Inc., 111 Fairground Avenue or by calling 375-2852. Other inquiries to be directed to the Triangle Finance Co., 109 West 2nd Street, Wayne, NE 68787, 375-1132. 1181z

TREE TRIMMING topping removal. 50 ft. bucket-truck for difficult and dangerous trees. Reasonable rates. Also interior painting. Call 755-2328. 1241f

FOR SALE: 1974 Camaro, PS, PB, A/C, AM/FM, Stereo Tape, Mag Wheels. Auto red in color, in excellent condition. Must see to appreciate. Phone 375-4279. F1813

business opportunity
BUSINESS OPPORTUNITY
#1 Weight Control Program
Lose 10-20 pounds a month
Get magical results with natural herbs and vitamins.
100% nutritionally balanced.
Triple your income in 90 days.
"Golden Opportunity."
For more details call 402-582-4662 and ask for Jill.

mobile homes for rent
FOR RENT: Two bedroom trailer-house. Partially furnished. Deposit required. Call 375-1679. 11813

FOR RENT OR SALE: 3 bedroom house. unfurnished. 375-2519. 11413

FOR RENT: Apartment. Call 375-2006. 11813

FOR RENT: Apartment. Call 375-2252. J14TF.

FOR RENT: Apartment. Call 375-1229. 11414

FOR RENT: Luxurious two bedroom apartment for rent. Call 375-1600. J176

NEBRASKA SALERS sale, February 25, Lincoln County Fairgrounds, North Platte, NE. Selling 50 Fullblood, purebred and percentage bulls and females. Catalogs: National Sales Service, Box 195, Dannebrog, NE 68831. 118

MALE OR FEMALE sales associates needed. \$20-25,000 possible first year. Training, bonuses and other incentives provided. Interview with: AFLAC, 1431 So. 33rd, Lincoln, NE 68505. 118

LARGE FARM auction for Ivan and Maxine Samuelson, Saturday, February 23, Bertrand, NE at 10:00 a.m. Country machinery, tractors, trucks, livestock, livestock feeding equipment, shop equipment. 118

1982 FORD van, high top with conversion. Loaded with equipment. Very fancy and very nice. Paus. Motor Sales, Inc. 1-800-672-7287. 118

FOR RENT: Land to rent south of Wayne. Call 375-4308, Jim Youngmeier. J14T3.

1981 5'x12' Blair Remix feed wagon, \$4,130; 1960 Highway loader, \$6,250; 1961 White single axle 5th wheel, 6 cylinder Cam, 5x3 transmission, \$3,150; 308-394-5540. 118

WANTED: Boats guns, campers 3-wheelers. New or used. Items for annual recreation conference. Call March 31. Call now to list. Harders, Cairo, NE, 308-485-4142. 118

TC RANCH Angus sale, Wednesday, February 27, Selling 43 1993 bulls, 30 early 1984 bulls, 10 1984 heifers. Complete performance available. Vance Udén, Franklin, NE. 118

AN INVITATION... if you are an eligible wartime veteran, The American Legion invites you to join. Call 402-464-6338 or write Box 5205, Lincoln, NE 68505. 118

work wanted
WILL DO house cleaning or take care of elderly. References. For information on request. Call 375-1024. 1144

Legal notices

Abbreviations for this legal: Ex, Expense; Fe, Fee; Gr, Grantee; AM, Milage; Re, Reimbursement; RL, Report; Sa, Salaries; Se, Services; Su, Supplies.

WAYNE CITY COUNCIL PROCEEDINGS
The Wayne City Council met in regular session on January 29, 1985. Present were Mayor Marsh, Councilmembers Decker, Eubank, Brummond, Brummond, Johnson, Attorney Swartz, City Administrator Klotzer and Clerk-Treasurer Brummond.
Minutes of the regular meeting on January 8, 1985 were approved.
Claims on file were approved for payment as shown below:
WATER: #2923.84; Meter, Dept. of Rev. Sa. 2733.31; Nat. Bank, Sa. 2018.97; Soc. Sec. Bur. Sa. 3943.11; ICMA, Reg. Corp. Sa. 72.74; City of Wayne-T&A, Sa. 8.00; City of Wayne-T&A, Sa. 258.42; City of Wayne-T&A, Sa. 249.02; City of Wayne-T&A, Sa. 93.40; W&A, City of Wayne, Sa. 54.35.
GENERAL: #2923.84; Meter, Dept. of Rev. Sa. 2733.31; Nat. Bank, Sa. 2018.97; Soc. Sec. Bur. Sa. 3943.11; ICMA, Reg. Corp. Sa. 72.74; City of Wayne-T&A, Sa. 8.00; City of Wayne-T&A, Sa. 258.42; City of Wayne-T&A, Sa. 249.02; City of Wayne-T&A, Sa. 93.40; W&A, City of Wayne, Sa. 54.35.
GENERAL: #2923.84; Meter, Dept. of Rev. Sa. 2733.31; Nat. Bank, Sa. 2018.97; Soc. Sec. Bur. Sa. 3943.11; ICMA, Reg. Corp. Sa. 72.74; City of Wayne-T&A, Sa. 8.00; City of Wayne-T&A, Sa. 258.42; City of Wayne-T&A, Sa. 249.02; City of Wayne-T&A, Sa. 93.40; W&A, City of Wayne, Sa. 54.35.
GENERAL: #2923.84; Meter, Dept. of Rev. Sa. 2733.31; Nat. Bank, Sa. 2018.97; Soc. Sec. Bur. Sa. 3943.11; ICMA, Reg. Corp. Sa. 72.74; City of Wayne-T&A, Sa. 8.00; City of Wayne-T&A, Sa. 258.42; City of Wayne-T&A, Sa. 249.02; City of Wayne-T&A, Sa. 93.40; W&A, City of Wayne, Sa. 54.35.
GENERAL: #2923.84; Meter, Dept. of Rev. Sa. 2733.31; Nat. Bank, Sa. 2018.97; Soc. Sec. Bur. Sa. 3943.11; ICMA, Reg. Corp. Sa. 72.74; City of Wayne-T&A, Sa. 8.00; City of Wayne-T&A, Sa. 258.42; City of Wayne-T&A, Sa. 249.02; City of Wayne-T&A, Sa. 93.40; W&A, City of Wayne, Sa. 54.35.
GENERAL: #2923.84; Meter, Dept. of Rev. Sa. 2733.31; Nat. Bank, Sa. 2018.97; Soc. Sec. Bur. Sa. 3943.11; ICMA, Reg. Corp. Sa. 72.74; City of Wayne-T&A, Sa. 8.00; City of Wayne-T&A, Sa. 258.42; City of Wayne-T&A, Sa. 249.02; City of Wayne-T&A, Sa. 93.40; W&A, City of Wayne, Sa. 54.35.
GENERAL: #2923.84; Meter, Dept. of Rev. Sa. 2733.31; Nat. Bank, Sa. 2018.97; Soc. Sec. Bur. Sa. 3943.11; ICMA, Reg. Corp. Sa. 72.74; City of Wayne-T&A, Sa. 8.00; City of Wayne-T&A, Sa. 258.42; City of Wayne-T&A, Sa. 249.02; City of Wayne-T&A, Sa. 93.40; W&A, City of Wayne, Sa. 54.35.
GENERAL: #2923.84; Meter, Dept. of Rev. Sa. 2733.31; Nat. Bank, Sa. 2018.97; Soc. Sec. Bur. Sa. 3943.11; ICMA, Reg. Corp. Sa. 72.74; City of Wayne-T&A, Sa. 8.00; City of Wayne-T&A, Sa. 258.42; City of Wayne-T&A, Sa. 249.02; City of Wayne-T&A, Sa. 93.40; W&A, City of Wayne, Sa. 54.35.
GENERAL: #2923.84; Meter, Dept. of Rev. Sa. 2733.31; Nat. Bank, Sa. 2018.97; Soc. Sec. Bur. Sa. 3943.11; ICMA, Reg. Corp. Sa. 72.74; City of Wayne-T&A, Sa. 8.00; City of Wayne-T&A, Sa. 258.42; City of Wayne-T&A, Sa. 249.02; City of Wayne-T&A, Sa. 93.40; W&A, City of Wayne, Sa. 54.35.
GENERAL: #2923.84; Meter, Dept. of Rev. Sa. 2733.31; Nat. Bank, Sa. 2018.97; Soc. Sec. Bur. Sa. 3943.11; ICMA, Reg. Corp. Sa. 72.74; City of Wayne-T&A, Sa. 8.00; City of Wayne-T&A, Sa. 258.42; City of Wayne-T&A, Sa. 249.02; City of Wayne-T&A, Sa. 93.40; W&A, City of Wayne, Sa. 54.35.
GENERAL: #2923.84; Meter, Dept. of Rev. Sa. 2733.31; Nat. Bank, Sa. 2018.97; Soc. Sec. Bur. Sa. 3943.11; ICMA, Reg. Corp. Sa. 72.74; City of Wayne-T&A, Sa. 8.00; City of Wayne-T&A, Sa. 258.42; City of Wayne-T&A, Sa. 249.02; City of Wayne-T&A, Sa. 93.40; W&A, City of Wayne, Sa. 54.35.
GENERAL: #2923.84; Meter, Dept. of Rev. Sa. 2733.31; Nat. Bank, Sa. 2018.97; Soc. Sec. Bur. Sa. 3943.11; ICMA, Reg. Corp. Sa. 72.74; City of Wayne-T&A, Sa. 8.00; City of Wayne-T&A, Sa. 258.42; City of Wayne-T&A, Sa. 249.02; City of Wayne-T&A, Sa. 93.40; W&A, City of Wayne, Sa. 54.35.
GENERAL: #2923.84; Meter, Dept. of Rev. Sa. 2733.31; Nat. Bank, Sa. 2018.97; Soc. Sec. Bur. Sa. 3943.11; ICMA, Reg. Corp. Sa. 72.74; City of Wayne-T&A, Sa. 8.00; City of Wayne-T&A, Sa. 258.42; City of Wayne-T&A, Sa. 249.02; City of Wayne-T&A, Sa. 93.40; W&A, City of Wayne, Sa. 54.35.
GENERAL: #2923.84; Meter, Dept. of Rev. Sa. 2733.31; Nat. Bank, Sa. 2018.97; Soc. Sec. Bur. Sa. 3943.11; ICMA, Reg. Corp. Sa. 72.74; City of Wayne-T&A, Sa. 8.00; City of Wayne-T&A, Sa. 258.42; City of Wayne-T&A, Sa. 249.02; City of Wayne-T&A, Sa. 93.40; W&A, City of Wayne, Sa. 54.35.
GENERAL: #2923.84; Meter, Dept. of Rev. Sa. 2733.31; Nat. Bank, Sa. 2018.97; Soc. Sec. Bur. Sa. 3943.11; ICMA, Reg. Corp. Sa. 72.74; City of Wayne-T&A, Sa. 8.00; City of Wayne-T&A, Sa. 258.42; City of Wayne-T&A, Sa. 249.02; City of Wayne-T&A, Sa. 93.40; W&A, City of Wayne, Sa. 54.35.
GENERAL: #2923.84; Meter, Dept. of Rev. Sa. 2733.31; Nat. Bank, Sa. 2018.97; Soc. Sec. Bur. Sa. 3943.11; ICMA, Reg. Corp. Sa. 72.74; City of Wayne-T&A, Sa. 8.00; City of Wayne-T&A, Sa. 258.42; City of Wayne-T&A, Sa. 249.02; City of Wayne-T&A, Sa. 93.40; W&A, City of Wayne, Sa. 54.35.
GENERAL: #2923.84; Meter, Dept. of Rev. Sa. 2733.31; Nat. Bank, Sa. 2018.97; Soc. Sec. Bur. Sa. 3943.11; ICMA, Reg. Corp. Sa. 72.74; City of Wayne-T&A, Sa. 8.00; City of Wayne-T&A, Sa. 258.42; City of Wayne-T&A, Sa. 249.02; City of Wayne-T&A, Sa. 93.40; W&A, City of Wayne, Sa. 54.35.
GENERAL: #2923.84; Meter, Dept. of Rev. Sa. 2733.31; Nat. Bank, Sa. 2018.97; Soc. Sec. Bur. Sa. 3943.11; ICMA, Reg. Corp. Sa. 72.74; City of Wayne-T&A, Sa. 8.00; City of Wayne-T&A, Sa. 258.42; City of Wayne-T&A, Sa. 249.02; City of Wayne-T&A, Sa. 93.40; W&A, City of Wayne, Sa. 54.35.
GENERAL: #2923.84; Meter, Dept. of Rev. Sa. 2733.31; Nat. Bank, Sa. 2018.97; Soc. Sec. Bur. Sa. 3943.11; ICMA, Reg. Corp. Sa. 72.74; City of Wayne-T&A, Sa. 8.00; City of Wayne-T&A, Sa. 258.42; City of Wayne-T&A, Sa. 249.02; City of Wayne-T&A, Sa. 93.40; W&A, City of Wayne, Sa. 54.35.
GENERAL: #2923.84; Meter, Dept. of Rev. Sa. 2733.31; Nat. Bank, Sa. 2018.97; Soc. Sec. Bur. Sa. 3943.11; ICMA, Reg. Corp. Sa. 72.74; City of Wayne-T&A, Sa. 8.00; City of Wayne-T&A, Sa. 258.42; City of Wayne-T&A, Sa. 249.02; City of Wayne-T&A, Sa. 93.40; W&A, City of Wayne, Sa. 54.35.
GENERAL: #2923.84; Meter, Dept. of Rev. Sa. 2733.31; Nat. Bank, Sa. 2018.97; Soc. Sec. Bur. Sa. 3943.11; ICMA, Reg. Corp. Sa. 72.74; City of Wayne-T&A, Sa. 8.00; City of Wayne-T&A, Sa. 258.42; City of Wayne-T&A, Sa. 249.02; City of Wayne-T&A, Sa. 93.40; W&A, City of Wayne, Sa. 54.35.
GENERAL: #2923.84; Meter, Dept. of Rev. Sa. 2733.31; Nat. Bank, Sa. 2018.97; Soc. Sec. Bur. Sa. 3943.11; ICMA, Reg. Corp. Sa. 72.74; City of Wayne-T&A, Sa. 8.00; City of Wayne-T&A, Sa. 258.42; City of Wayne-T&A, Sa. 249.02; City of Wayne-T&A, Sa. 93.40; W&A, City of Wayne, Sa. 54.35.
GENERAL: #2923.84; Meter, Dept. of Rev. Sa. 2733.31; Nat. Bank, Sa. 2018.97; Soc. Sec. Bur. Sa. 3943.11; ICMA, Reg. Corp. Sa. 72.74; City of Wayne-T&A, Sa. 8.00; City of Wayne-T&A, Sa. 258.42; City of Wayne-T&A, Sa. 249.02; City of Wayne-T&A, Sa. 93.40; W&A, City of Wayne, Sa. 54.35.
GENERAL: #2923.84; Meter, Dept. of Rev. Sa. 2733.31; Nat. Bank, Sa. 2018.97; Soc. Sec. Bur. Sa. 3943.11; ICMA, Reg. Corp. Sa. 72.74; City of Wayne-T&A, Sa. 8.00; City of Wayne-T&A, Sa. 258.42; City of Wayne-T&A, Sa. 249.02; City of Wayne-T&A, Sa. 93.40; W&A, City of Wayne, Sa. 54.35.
GENERAL: #2923.84; Meter, Dept. of Rev. Sa. 2733.31; Nat. Bank, Sa. 2018.97; Soc. Sec. Bur. Sa. 3943.11; ICMA, Reg. Corp. Sa. 72.74; City of Wayne-T&A, Sa. 8.00; City of Wayne-T&A, Sa. 258.42; City of Wayne-T&A, Sa. 249.02; City of Wayne-T&A, Sa. 93.40; W&A, City of Wayne, Sa. 54.35.
GENERAL: #2923.84; Meter, Dept. of Rev. Sa. 2733.31; Nat. Bank, Sa. 2018.97; Soc. Sec. Bur. Sa. 3943.11; ICMA, Reg. Corp. Sa. 72.74; City of Wayne-T&A, Sa. 8.00; City of Wayne-T&A, Sa. 258.42; City of Wayne-T&A, Sa. 249.02; City of Wayne-T&A, Sa. 93.40; W&A, City of Wayne, Sa. 54.35.
GENERAL: #2923.84; Meter, Dept. of Rev. Sa. 2733.31; Nat. Bank, Sa. 2018.97; Soc. Sec. Bur. Sa. 3943.11; ICMA, Reg. Corp. Sa. 72.74; City of Wayne-T&A, Sa. 8.00; City of Wayne-T&A, Sa. 258.42; City of Wayne-T&A, Sa. 249.02; City of Wayne-T&A, Sa. 93.40; W&A, City of Wayne, Sa. 54.35.
GENERAL: #2923.84; Meter, Dept. of Rev. Sa. 2733.31; Nat. Bank, Sa. 2018.97; Soc. Sec. Bur. Sa. 3943.11; ICMA, Reg. Corp. Sa. 72.74; City of Wayne-T&A, Sa. 8.00; City of Wayne-T&A, Sa. 258.42; City of Wayne-T&A, Sa. 249.02; City of Wayne-T&A, Sa. 93.40; W&A, City of Wayne, Sa. 54.35.
GENERAL: #2923.84; Meter, Dept. of Rev. Sa. 2733.31; Nat. Bank, Sa. 2018.97; Soc. Sec. Bur. Sa. 3943.11; ICMA, Reg. Corp. Sa. 72.74; City of Wayne-T&A, Sa. 8.00; City of Wayne-T&A, Sa. 258.42; City of Wayne-T&A, Sa. 249.02; City of Wayne-T&A, Sa. 93.40; W&A, City of Wayne, Sa. 54.35.
GENERAL: #2923.84; Meter, Dept. of Rev. Sa. 2733.31; Nat. Bank, Sa. 2018.97; Soc. Sec. Bur. Sa. 3943.11; ICMA, Reg. Corp. Sa. 72.74; City of Wayne-T&A, Sa. 8.00; City of Wayne-T&A, Sa. 258.42; City of Wayne-T&A, Sa. 249.02; City of Wayne-T&A, Sa. 93.40; W&A, City of Wayne, Sa. 54.35.
GENERAL: #2923.84; Meter, Dept. of Rev. Sa. 2733.31; Nat. Bank, Sa. 2018.97; Soc. Sec. Bur. Sa. 3943.11; ICMA, Reg. Corp. Sa. 72.74; City of Wayne-T&A, Sa. 8.00; City of Wayne-T&A, Sa. 258.42; City of Wayne-T&A, Sa. 249.02; City of Wayne-T&A, Sa. 93.40; W&A, City of Wayne, Sa. 54.35.
GENERAL: #2923.84; Meter, Dept. of Rev. Sa. 2733.31; Nat. Bank, Sa. 2018.97; Soc. Sec. Bur. Sa. 3943.11; ICMA, Reg. Corp. Sa. 72.74; City of Wayne-T&A, Sa. 8.00; City of Wayne-T&A, Sa. 258.42; City of Wayne-T&A, Sa. 249.02; City of Wayne-T&A, Sa. 93.40; W&A, City of Wayne, Sa. 54.35.
GENERAL: #2923.84; Meter, Dept. of Rev. Sa. 2733.31; Nat. Bank, Sa. 2018.97; Soc. Sec. Bur. Sa. 3943.11; ICMA, Reg. Corp. Sa. 72.74; City of Wayne-T&A, Sa. 8.00; City of Wayne-T&A, Sa. 258.42; City of Wayne-T&A, Sa. 249.02; City of Wayne-T&A, Sa. 93.40; W&A, City of Wayne, Sa. 54.35.
GENERAL: #2923.84; Meter, Dept. of Rev. Sa. 2733.31; Nat. Bank, Sa. 2018.97; Soc. Sec. Bur. Sa. 3943.11; ICMA, Reg. Corp. Sa. 72.74; City of Wayne-T&A, Sa. 8.00; City of Wayne-T&A, Sa. 258.42; City of Wayne-T&A, Sa. 249.02; City of Wayne-T&A, Sa. 93.40; W&A, City of Wayne, Sa. 54.35.
GENERAL: #2923.84; Meter, Dept. of Rev. Sa. 2733.31; Nat. Bank, Sa. 2018.97; Soc. Sec. Bur. Sa. 3943.11; ICMA, Reg. Corp. Sa. 72.74; City of Wayne-T&A, Sa. 8.00; City of Wayne-T&A, Sa. 258.42; City of Wayne-T&A, Sa. 249.02; City of Wayne-T&A, Sa. 93.40; W&A, City of Wayne, Sa. 54.35.
GENERAL: #2923.84; Meter, Dept. of Rev. Sa. 2733.31; Nat. Bank, Sa. 2018.97; Soc. Sec. Bur. Sa. 3943.11; ICMA, Reg. Corp. Sa. 72.74; City of Wayne-T&A, Sa. 8.00; City of Wayne-T&A, Sa. 258.42; City of Wayne-T&A, Sa. 249.02; City of Wayne-T&A, Sa. 93.40; W&A, City of Wayne, Sa. 54.35.
GENERAL: #2923.84; Meter, Dept. of Rev. Sa. 2733.31; Nat. Bank, Sa. 2018.97; Soc. Sec. Bur. Sa. 3943.11; ICMA, Reg. Corp. Sa. 72.74; City of Wayne-T&A, Sa. 8.00; City of Wayne-T&A, Sa. 258.42; City of Wayne-T&A, Sa. 249.02; City of Wayne-T&A, Sa. 93.40; W&A, City of Wayne, Sa. 54.35.
GENERAL: #2923.84; Meter, Dept. of Rev. Sa. 2733.31; Nat. Bank, Sa. 2018.97; Soc. Sec. Bur. Sa. 3943.11; ICMA, Reg. Corp. Sa. 72.74; City of Wayne-T&A, Sa. 8.00; City of Wayne-T&A, Sa. 258.42; City of Wayne-T&A, Sa. 249.02; City of Wayne-T&A, Sa. 93.40; W&A, City of Wayne, Sa. 54.35.
GENERAL: #2923.84; Meter, Dept. of Rev. Sa. 2733.31; Nat. Bank, Sa. 2018.97; Soc. Sec. Bur. Sa. 3943.11; ICMA, Reg. Corp. Sa. 72.74; City of Wayne-T&A, Sa. 8.00; City of Wayne-T&A, Sa. 258.42; City of Wayne-T&A, Sa. 249.02; City of Wayne-T&A, Sa. 93.40; W&A, City of Wayne, Sa. 54.35.
GENERAL: #2923.84; Meter, Dept. of Rev. Sa. 2733.31; Nat. Bank, Sa. 2018.97; Soc. Sec. Bur. Sa. 3943.11; ICMA, Reg. Corp. Sa. 72.74; City of Wayne-T&A, Sa. 8.00; City of Wayne-T&A, Sa. 258.42; City of Wayne-T&A, Sa. 249.02; City of Wayne-T&A, Sa. 93.40; W&A, City of Wayne, Sa. 54.35.
GENERAL: #2923.84; Meter, Dept. of Rev. Sa. 2733.31; Nat. Bank, Sa. 2018.97; Soc. Sec. Bur. Sa. 3943.11; ICMA, Reg. Corp. Sa. 72.74; City of Wayne-T&A, Sa. 8.00; City of Wayne-T&A, Sa. 258.42; City of Wayne-T&A, Sa. 249.02; City of Wayne-T&A, Sa. 93.40; W&A, City of Wayne, Sa. 54.35.
GENERAL: #2923.84; Meter, Dept. of Rev. Sa. 2733.31; Nat. Bank, Sa. 2018.97; Soc. Sec. Bur. Sa. 3943.11; ICMA, Reg. Corp. Sa. 72.74; City of Wayne-T&A, Sa. 8.00; City of Wayne-T&A, Sa. 258.42; City of Wayne-T&A, Sa. 249.02; City of Wayne-T&A, Sa. 93.40; W&A, City of Wayne, Sa. 54.35.
GENERAL: #2923.84; Meter, Dept. of Rev. Sa. 2733.31; Nat. Bank, Sa. 2018.97; Soc. Sec. Bur. Sa. 3943.11; ICMA, Reg. Corp. Sa. 72.74; City of Wayne-T&A, Sa. 8.00; City of Wayne-T&A, Sa. 258.42; City of Wayne-T&A, Sa. 249.02; City of Wayne-T&A, Sa. 93.40; W&A, City of Wayne, Sa. 54.35.
GENERAL: #2923.84; Meter, Dept. of Rev. Sa. 2733.31; Nat. Bank, Sa. 2018.97; Soc. Sec. Bur. Sa. 3943.11; ICMA, Reg. Corp. Sa. 72.74; City of Wayne-T&A, Sa. 8.00; City of Wayne-T&A, Sa. 258.42; City of Wayne-T&A, Sa. 249.02; City of Wayne-T&A, Sa. 93.40; W&A, City of Wayne, Sa. 54.35.
GENERAL: #2923.84; Meter, Dept. of Rev. Sa. 2733.31; Nat. Bank, Sa. 2018.97; Soc. Sec. Bur. Sa. 3943.11; ICMA, Reg. Corp. Sa. 72.74; City of Wayne-T&A, Sa. 8.00; City of Wayne-T&A, Sa. 258.42; City of Wayne-T&A, Sa. 249.02; City of Wayne-T&A, Sa. 93.40; W&A, City of Wayne, Sa. 54.35.
GENERAL: #2923.84; Meter, Dept. of Rev. Sa. 2733.31; Nat. Bank, Sa. 2018.97; Soc. Sec. Bur. Sa. 3943.11; ICMA, Reg. Corp. Sa. 72.74; City of Wayne-T&A, Sa. 8.00; City of Wayne-T&A, Sa. 258.42; City of Wayne-T&A, Sa. 249.02; City of Wayne-T&A, Sa. 93.40; W&A, City of Wayne, Sa. 54.35.
GENERAL: #2923.84; Meter, Dept. of Rev. Sa. 2733.31; Nat. Bank, Sa. 2018.97; Soc. Sec. Bur. Sa. 3943.11; ICMA, Reg. Corp. Sa. 72.74; City of Wayne-T&A, Sa. 8.00; City of Wayne-T&A, Sa. 258.42; City of Wayne-T&A, Sa. 249.02; City of Wayne-T&A, Sa. 93.40; W&A, City of Wayne, Sa. 54.35.
GENERAL: #2923.84; Meter, Dept. of Rev. Sa. 2733.31; Nat. Bank, Sa. 2018.97; Soc. Sec. Bur. Sa. 3943.11; ICMA, Reg. Corp. Sa. 72.74; City of Wayne-T&A, Sa. 8.00; City of Wayne-T&A, Sa. 258.42; City of Wayne-T&A, Sa. 249.02; City of Wayne-T&A, Sa. 93.40; W&A, City of Wayne, Sa. 54.35.
GENERAL: #2923.84; Meter, Dept. of Rev. Sa. 2733.31; Nat. Bank, Sa. 2018.97; Soc. Sec. Bur. Sa. 3943.11; ICMA, Reg. Corp. Sa. 72.74; City of Wayne-T&A, Sa. 8.00; City of Wayne-T&A, Sa. 258.42; City of Wayne-T&A, Sa. 249.02; City of Wayne-T&A, Sa. 93.40; W&A, City of Wayne, Sa. 54.35.
GENERAL: #2923.84; Meter, Dept. of Rev. Sa. 2733.31; Nat. Bank, Sa. 2018.97; Soc. Sec. Bur. Sa. 3943.11; ICMA, Reg. Corp. Sa. 72.74; City of Wayne-T&A, Sa. 8.00; City of Wayne-T&A, Sa. 258.42; City of Wayne-T&A, Sa. 249.02; City of Wayne-T&A, Sa. 93.40; W&A, City of Wayne, Sa. 54.35.
GENERAL: #2923.84; Meter, Dept. of Rev. Sa. 2733.31; Nat. Bank, Sa. 2018.97; Soc. Sec. Bur. Sa. 3943.11; ICMA, Reg. Corp. Sa. 72.74; City of Wayne-T&A, Sa. 8.00; City of Wayne-T&A, Sa. 258.42; City of Wayne-T&A, Sa. 249.02; City of Wayne-T&A, Sa. 93.40; W&A, City of Wayne, Sa. 54.35.
GENERAL: #2923.84; Meter, Dept. of Rev. Sa. 2733.31; Nat. Bank, Sa. 2018.97; Soc. Sec. Bur. Sa. 3943.11; ICMA, Reg. Corp. Sa. 72.74; City of Wayne-T&A, Sa. 8.00; City of Wayne-T&A, Sa. 258.42; City of Wayne-T&A, Sa. 249.02; City of Wayne-T&A, Sa. 93.40; W&A, City of Wayne, Sa. 54.35.
GENERAL: #2923.84; Meter, Dept. of Rev. Sa. 2733.31; Nat. Bank, Sa. 2018.97; Soc. Sec. Bur. Sa. 3943.11; ICMA, Reg. Corp. Sa. 72.74; City of Wayne-T&A, Sa. 8.00; City of Wayne-T&A, Sa. 258.42; City of Wayne-T&A, Sa. 249.02; City of Wayne-T&A, Sa. 93.40; W&A, City of Wayne, Sa. 54.35.
GENERAL: #2923.84; Meter, Dept. of Rev. Sa. 2733.31; Nat. Bank, Sa. 2018.97; Soc. Sec. Bur. Sa. 3943.11; ICMA, Reg. Corp. Sa. 72.74; City of Wayne-T&A, Sa. 8.00; City of Wayne-T&A, Sa. 258.42; City of Wayne-T&A, Sa. 249.02; City of Wayne-T&A, Sa. 93.40; W&A, City of Wayne, Sa. 54.35.
GENERAL: #2923.84; Meter, Dept. of Rev. Sa. 2733.31; Nat. Bank, Sa. 2018.97; Soc. Sec. Bur. Sa. 3943.11; ICMA, Reg. Corp. Sa. 72.74; City of Wayne-T&A, Sa. 8.00; City of Wayne-T&A, Sa. 258.42; City of Wayne-T&A, Sa. 249.02; City of Wayne-T&A, Sa. 93.40; W&A, City of Wayne, Sa. 54.35.
GENERAL: #2923.84; Meter, Dept. of Rev. Sa. 2733.31; Nat. Bank, Sa. 2018.97; Soc. Sec. Bur. Sa. 3943.11; ICMA, Reg. Corp. Sa. 72.74; City of Wayne-T&A, Sa. 8